



República de Moçambique
Ministério da Planificação e Desenvolvimento



Special Economic Zones Regime
Tokyo, 16 April 2013



GAZEDA

- **Special Economic Zones Authority**
- **Created by Decree**
- **Coordinate all activities related to creation and management of SEZ and IFZ**
- **Under the M. Planning and Development**
- **Main Office in Maputo**
- **Offices in SEZ areas**

SEZ REGIME

- **Under the authority of Gazeta/MPD**
- **SEZ and IFZ**
- **Territory under special rules and regulations**
 - **Fiscal**
 - **Immigration**
 - **Environmental**
 - **Etc...**

SEZ REGIME

FISCAL

- EXEMPTION ON DUTIES AND VAT ON IMPORTS
- **IRPC – OPERATOR'S**
 - EXEMPTION 1S 5 YEARS
 - 50% TAX REDUCTION FROM 6 TO 10
 - 25% TAX REDUCTION FOR THE LIFE OF THE PROJECT
- **IRPC – ENTERPRISES**
 - EXEMPTION FROM 1-3
 - TAX REDUCTION 50% FROM 4 TO 10
 - 25% TAX REDUCTION FROM 11 TO 15

NON FISCAL

- **IMMIGRATION**
- **LABOR**
- **ENVIRONMENT**
- **EXCHANGE**
- **INSPECTIONS**

IFZ REGIME

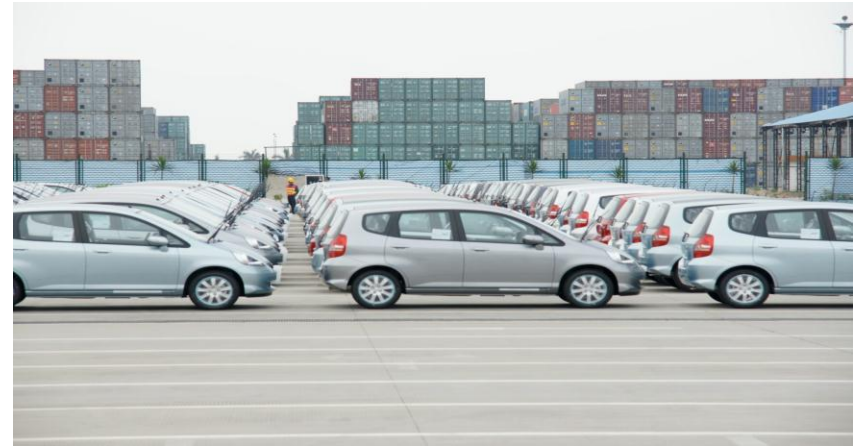
FISCAL

- EXEMPTION ON DUTIES AND VAT ON IMPORTS
- IRPC – OPERATOR'S AND ENTERPRISES
 - EXEMPTION 1S 10 YEARS
 - 50% TAX REDUCTION FROM 11 TO 15
 - 25% TAX REDUCTION FOR THE LIFE OF THE PROJECT
- IRPC – ISOLATED ENTERPRISES
 - EXEMPTION FROM 1-5
 - TAX REDUCTION 50% FROM 6 TO 10
 - 25% TAX REDUCTION FOR THE LIFE OF THE PROJECT

NON FISCAL

- IMMIGRATION
- LABOR
- ENVIRONMENT
- EXCHANGE
- INSPECTIONS

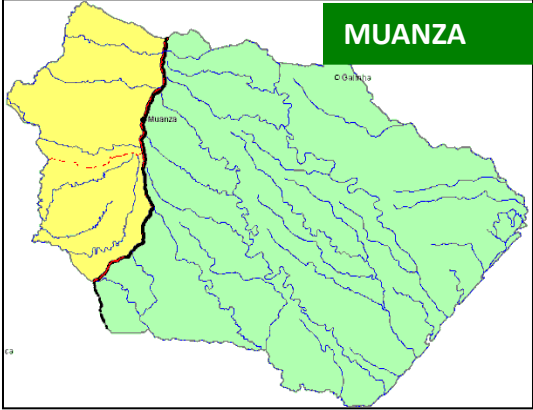
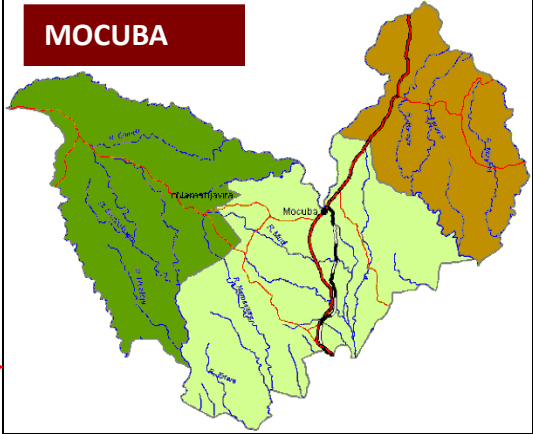
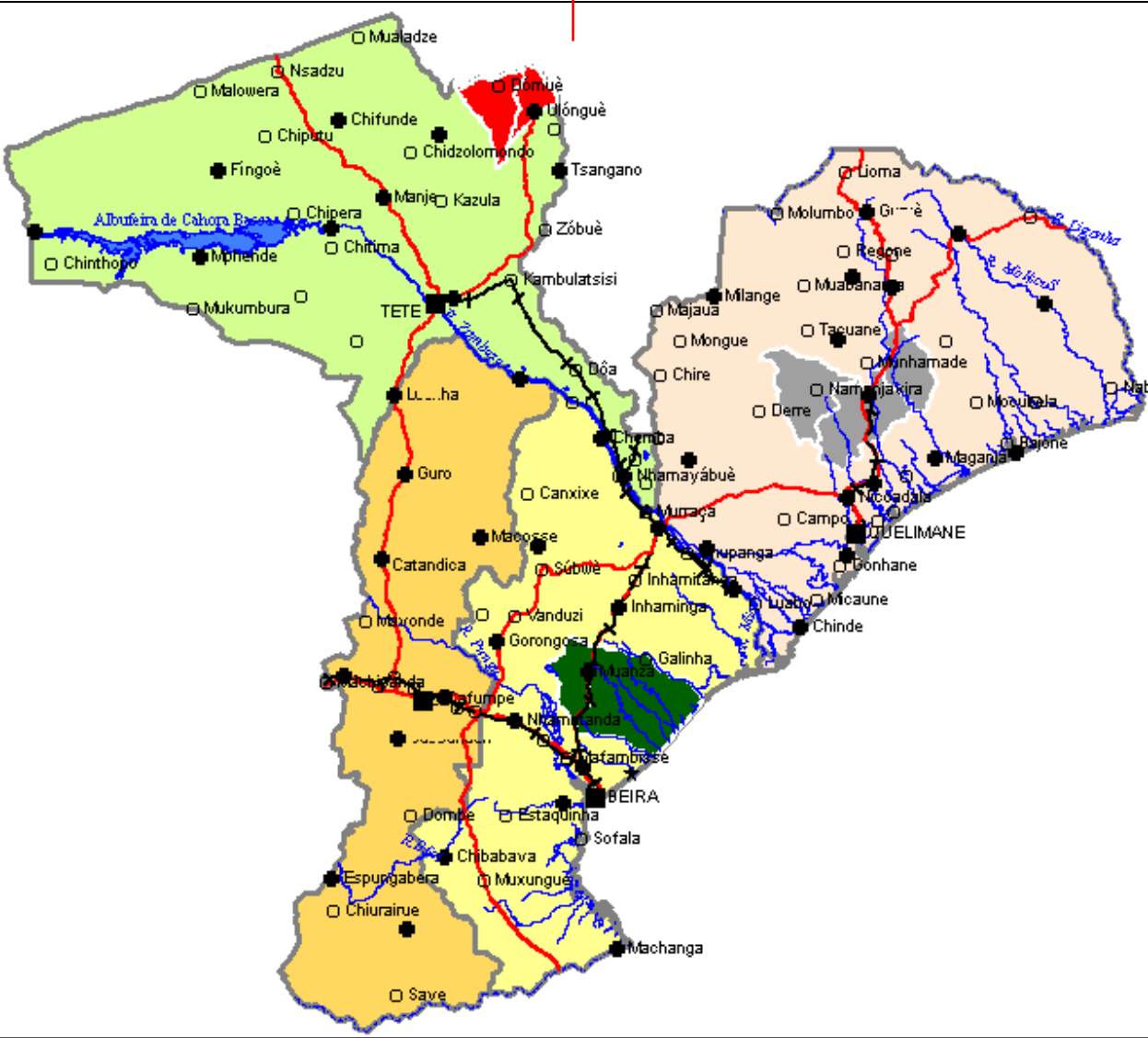
OUR VISION



SEZ PLANS



CENTRO



NACALA SPECIAL ECONOMIC ZONE

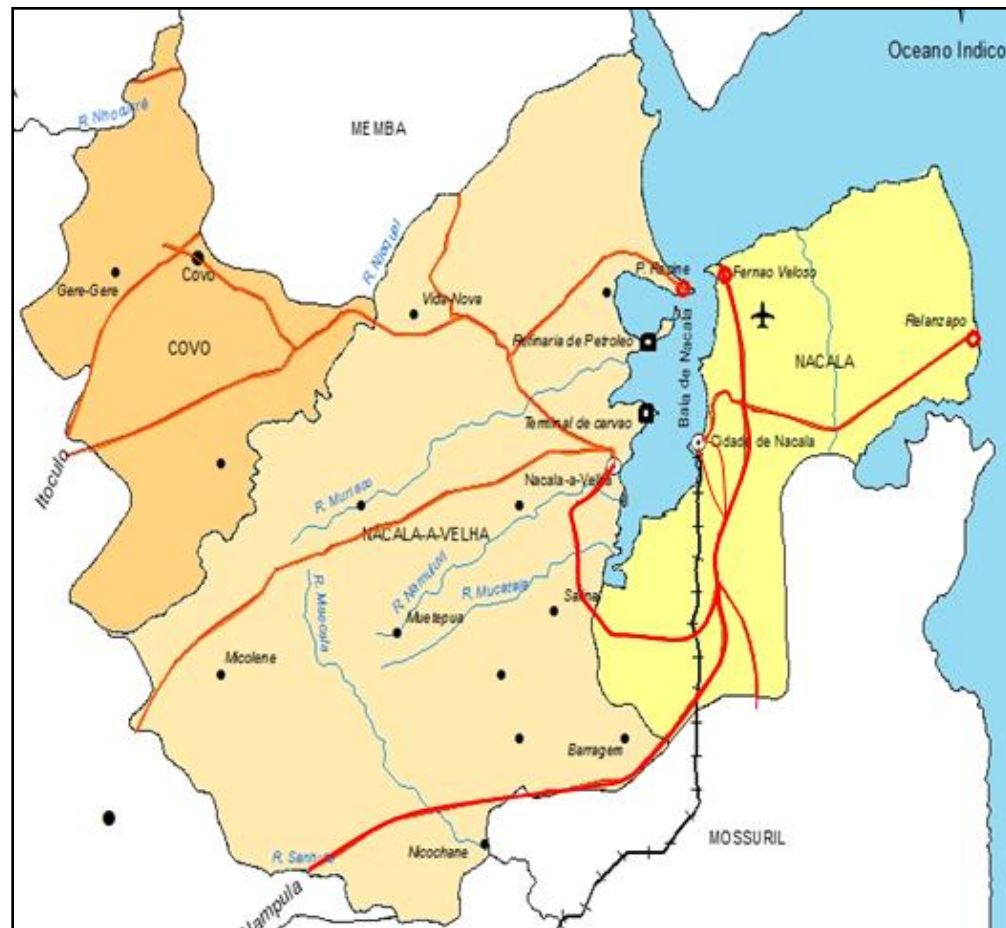
SOUTHERN AFRICA



MOZAMBIQUE



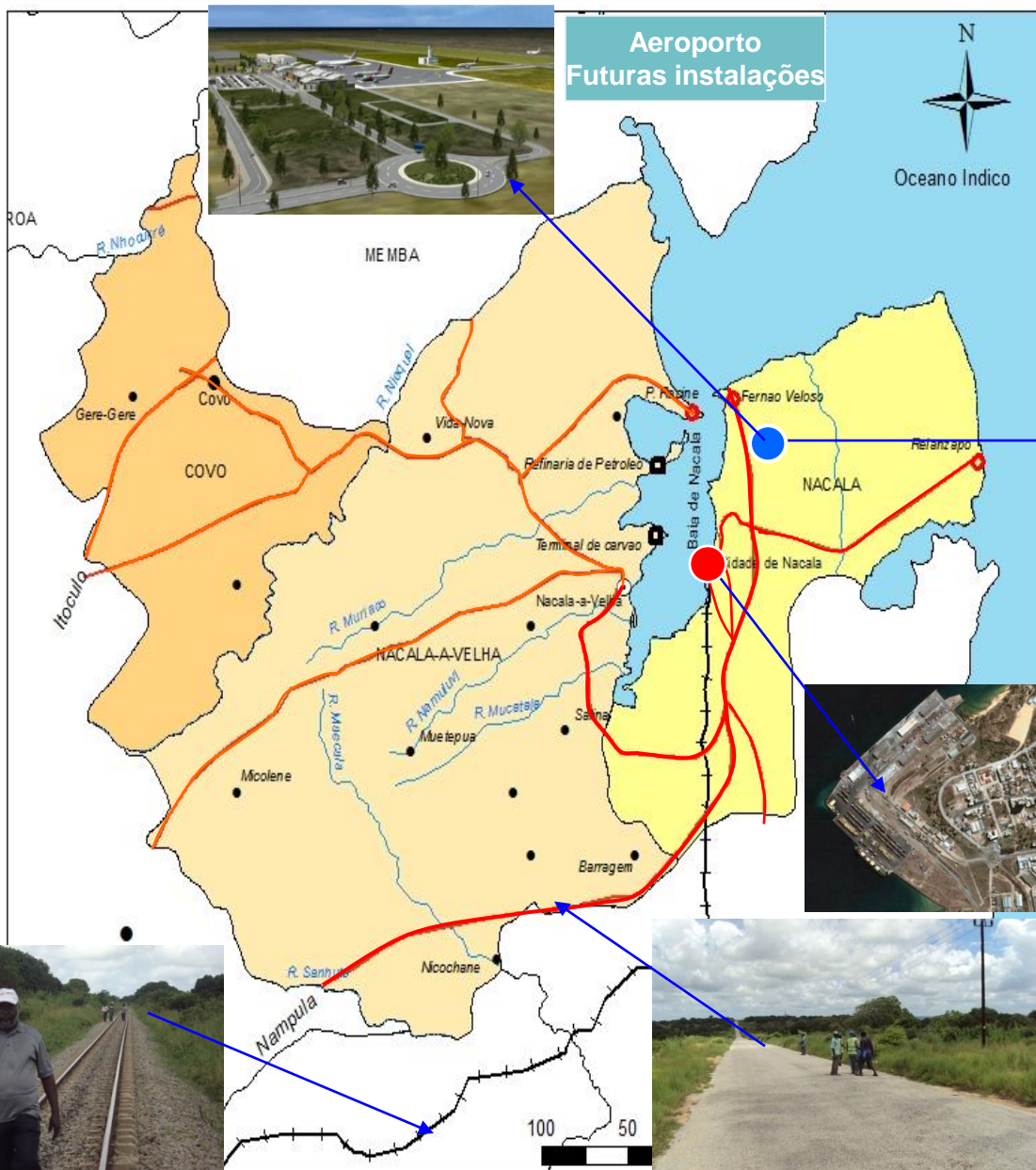
NAMPULA



**NACALA SPECIAL
ECONOMIC ZONE**

GAZEDA
Gabinete das Zonas Económicas
de Desenvolvimento Acelerado

ZONA ECONOMICA ESPECIAL DE NACALA



GAZEDA

Gabinete das Zonas Económicas de Desenvolvimento Acelerado

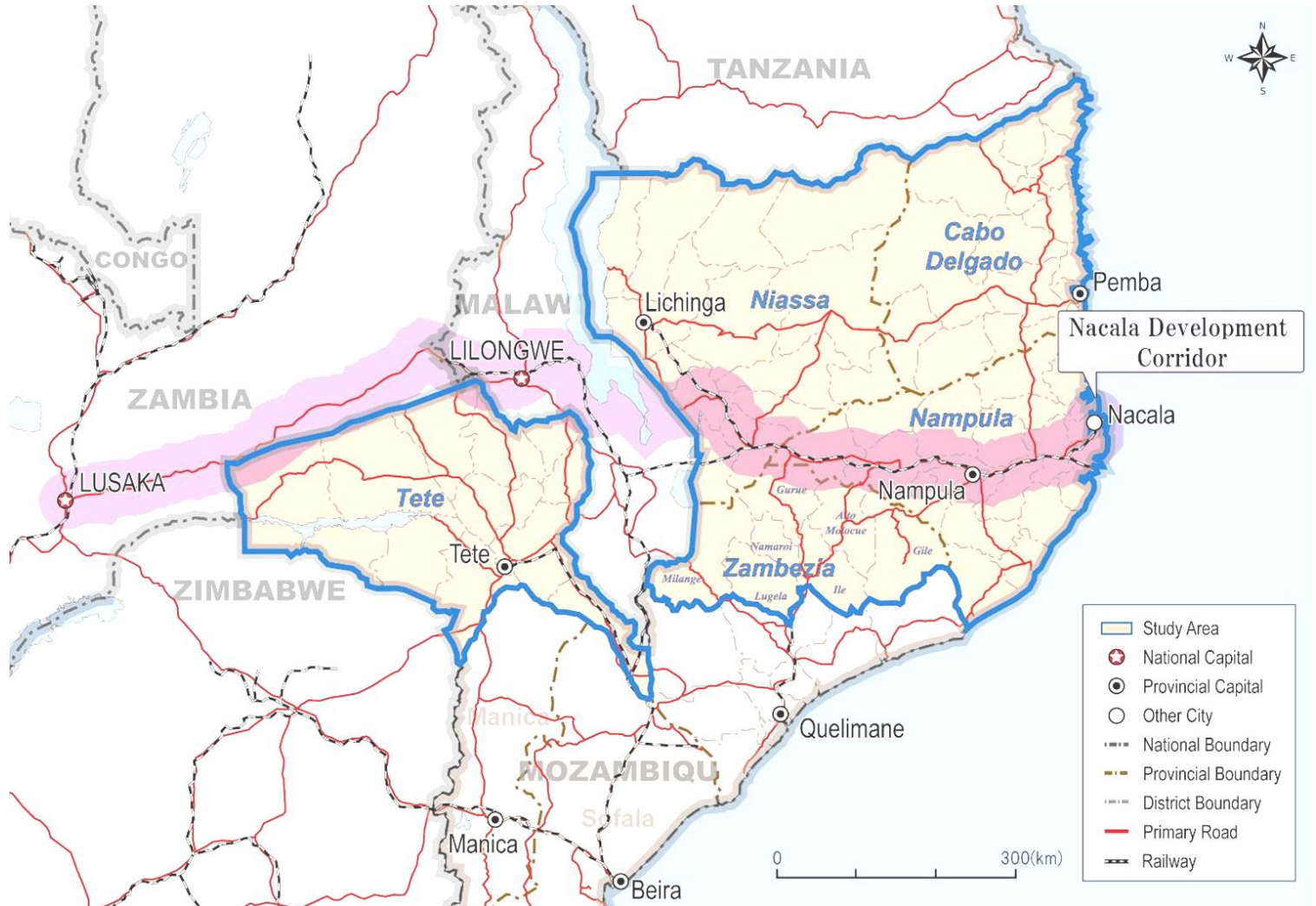
Aeroporto Vista actual

LEGENDA

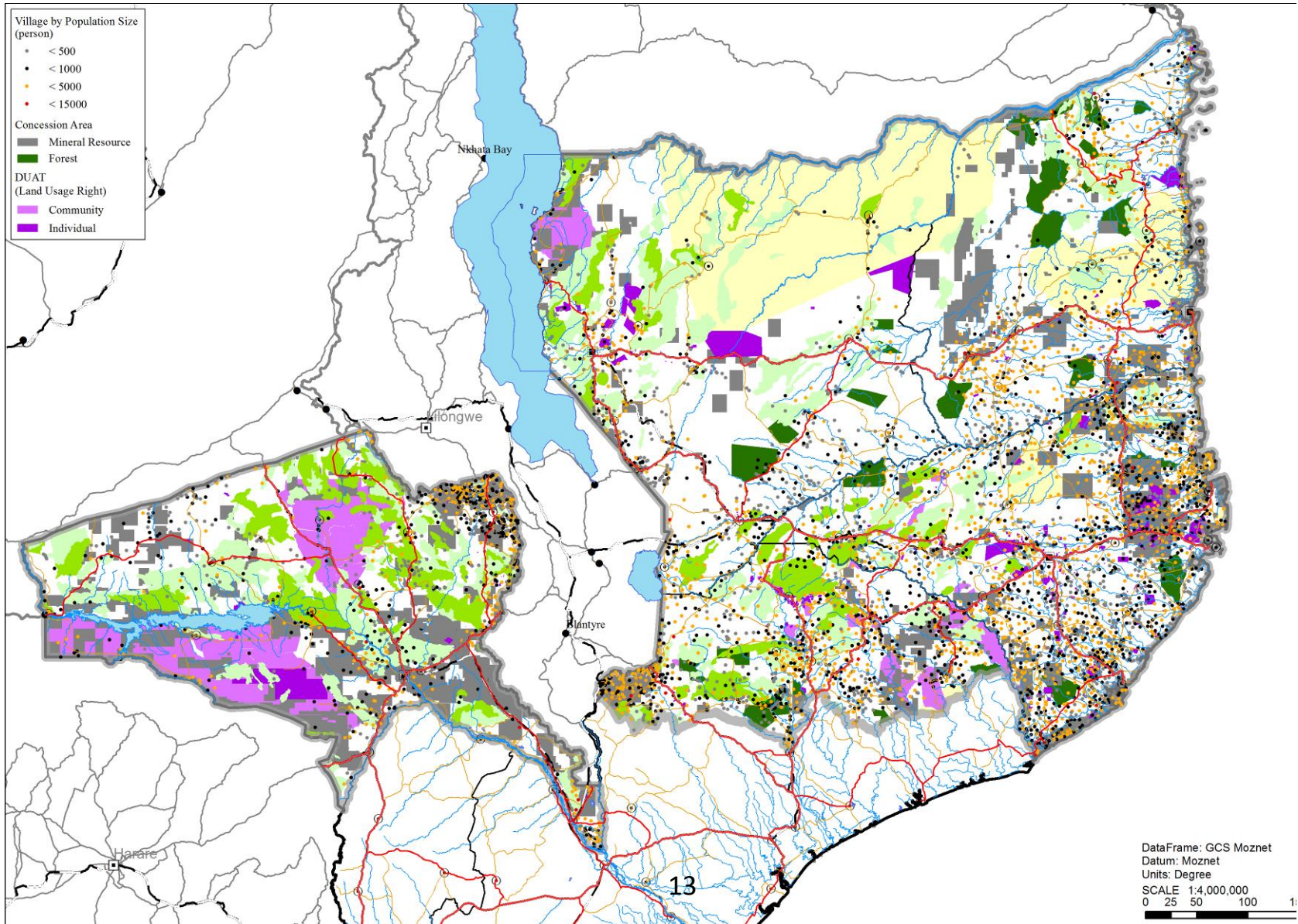
- Aldeias
- ✈ Aeroporto
- ⊙ Sede do Distrito
- Sede do P. A.
- Limite dos P. A.
- Rios
- Estradas
- +— Linha Ferrea



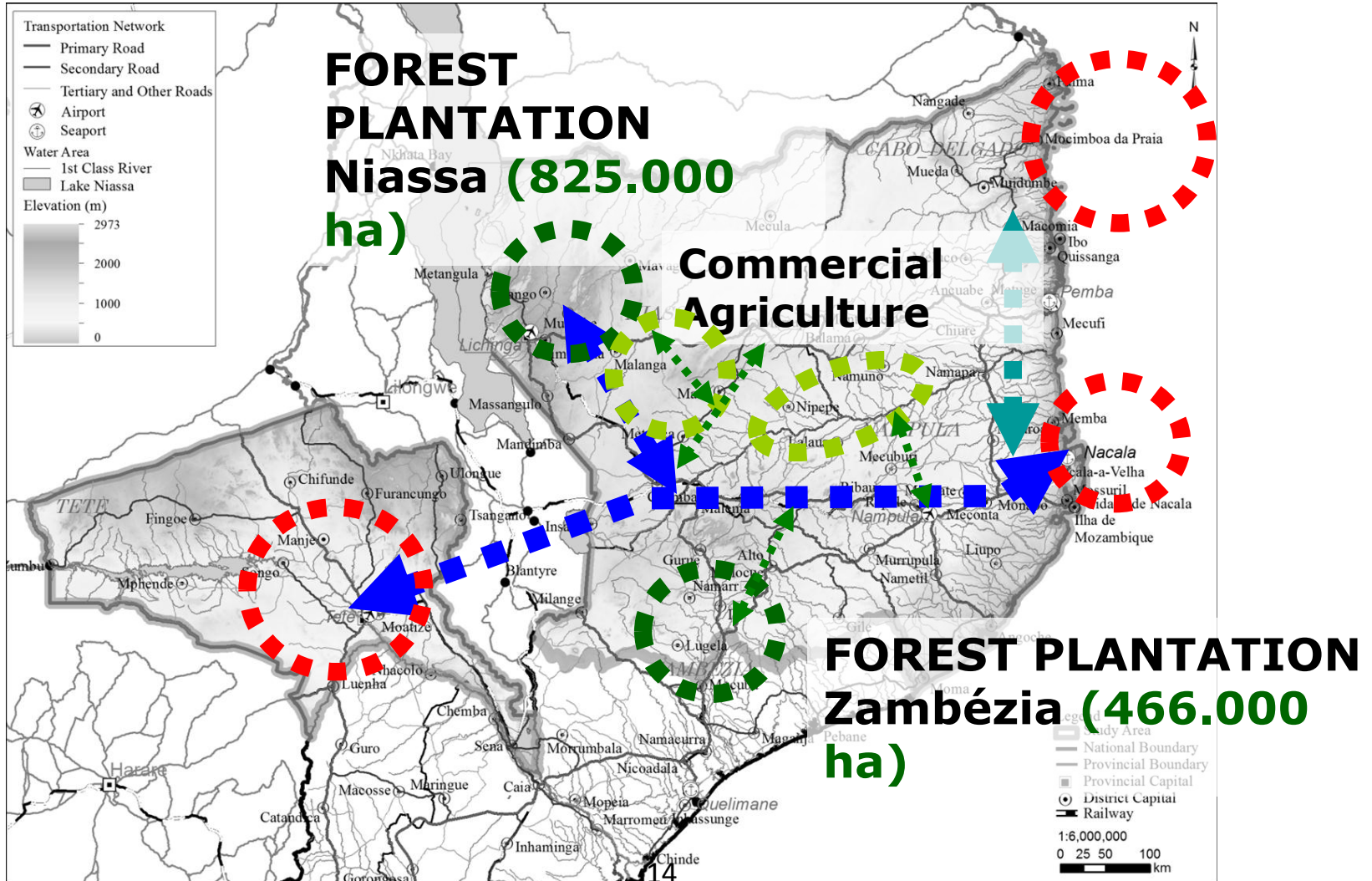
PEDEC-NACALA



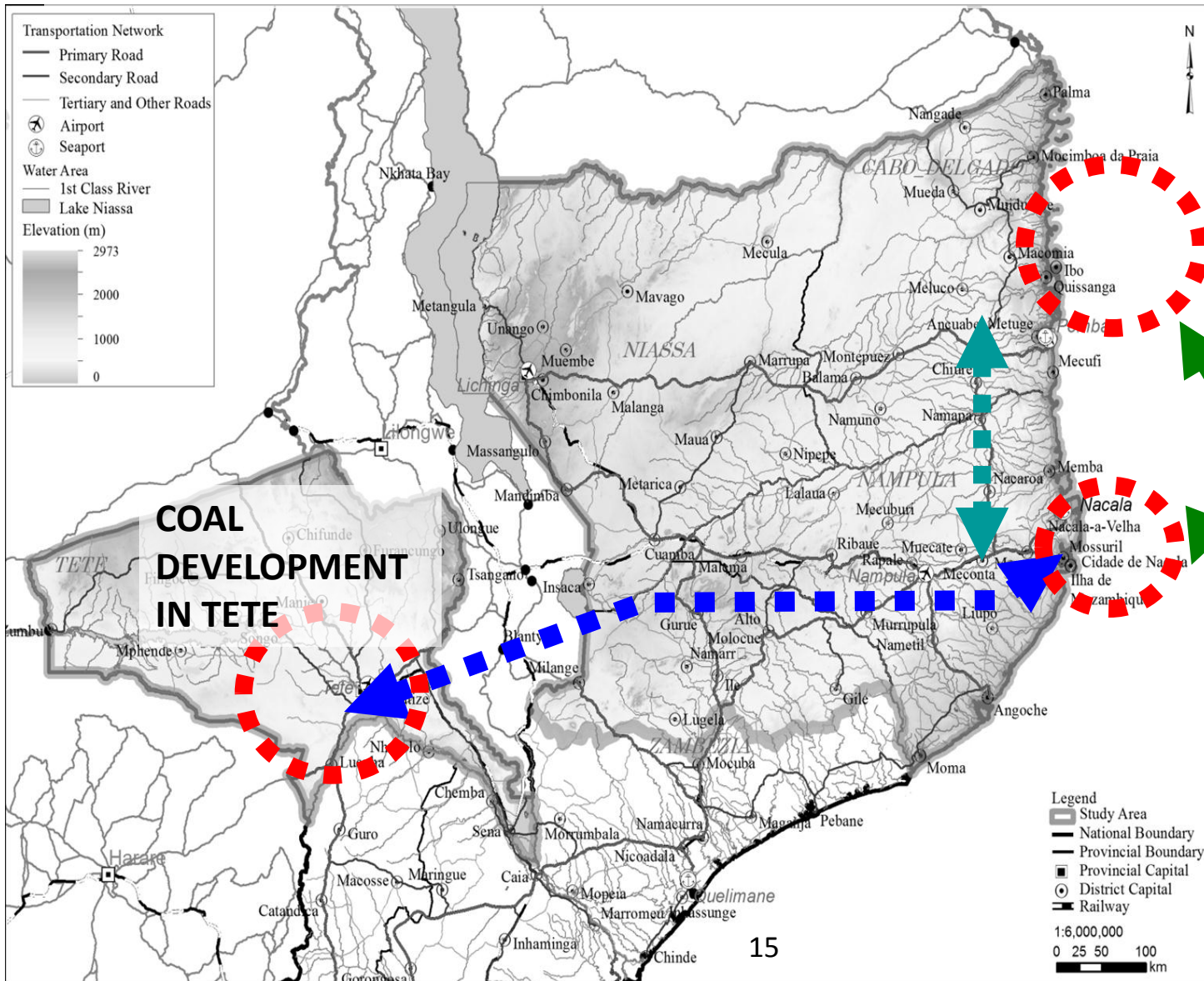
LAND



AGRICULTURE AND FORESTS



MINERAL RESOURCES

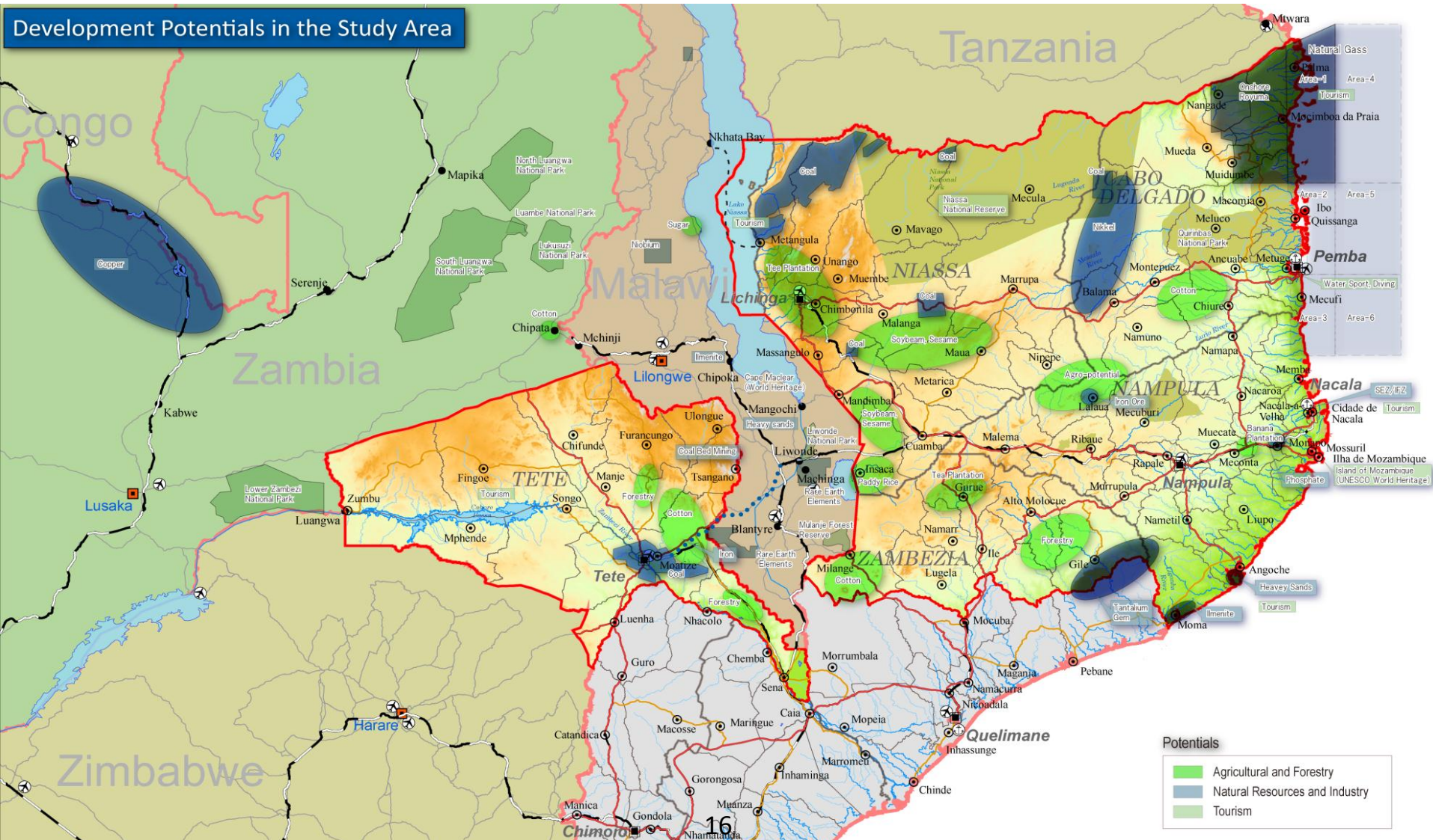


**NATURAL GAS
ROVUMA BASIN**

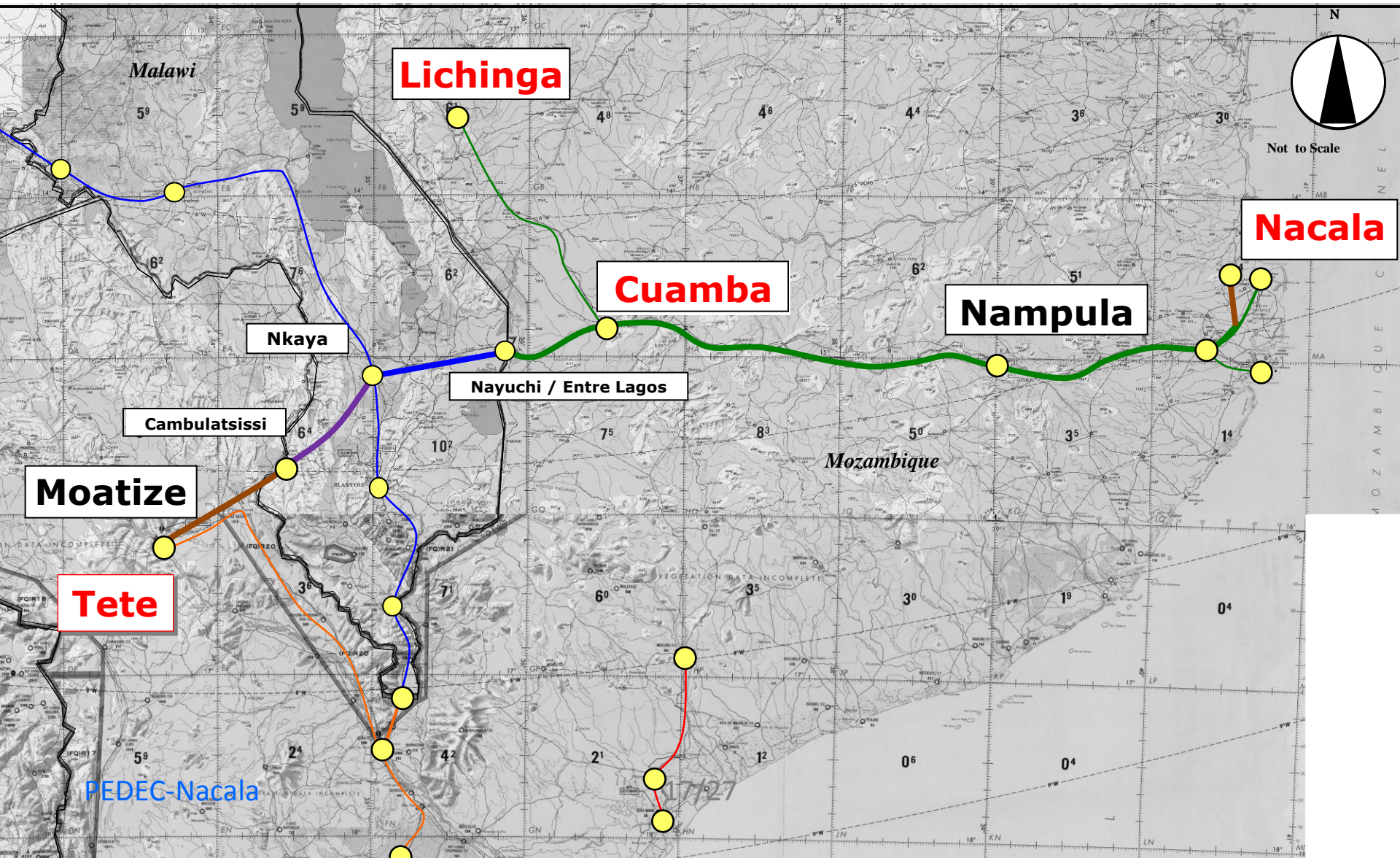
**PROCESSING
INDUSTRIES IN
NACALA PORTO**

**COAL
DEVELOPMENT
IN TETE**

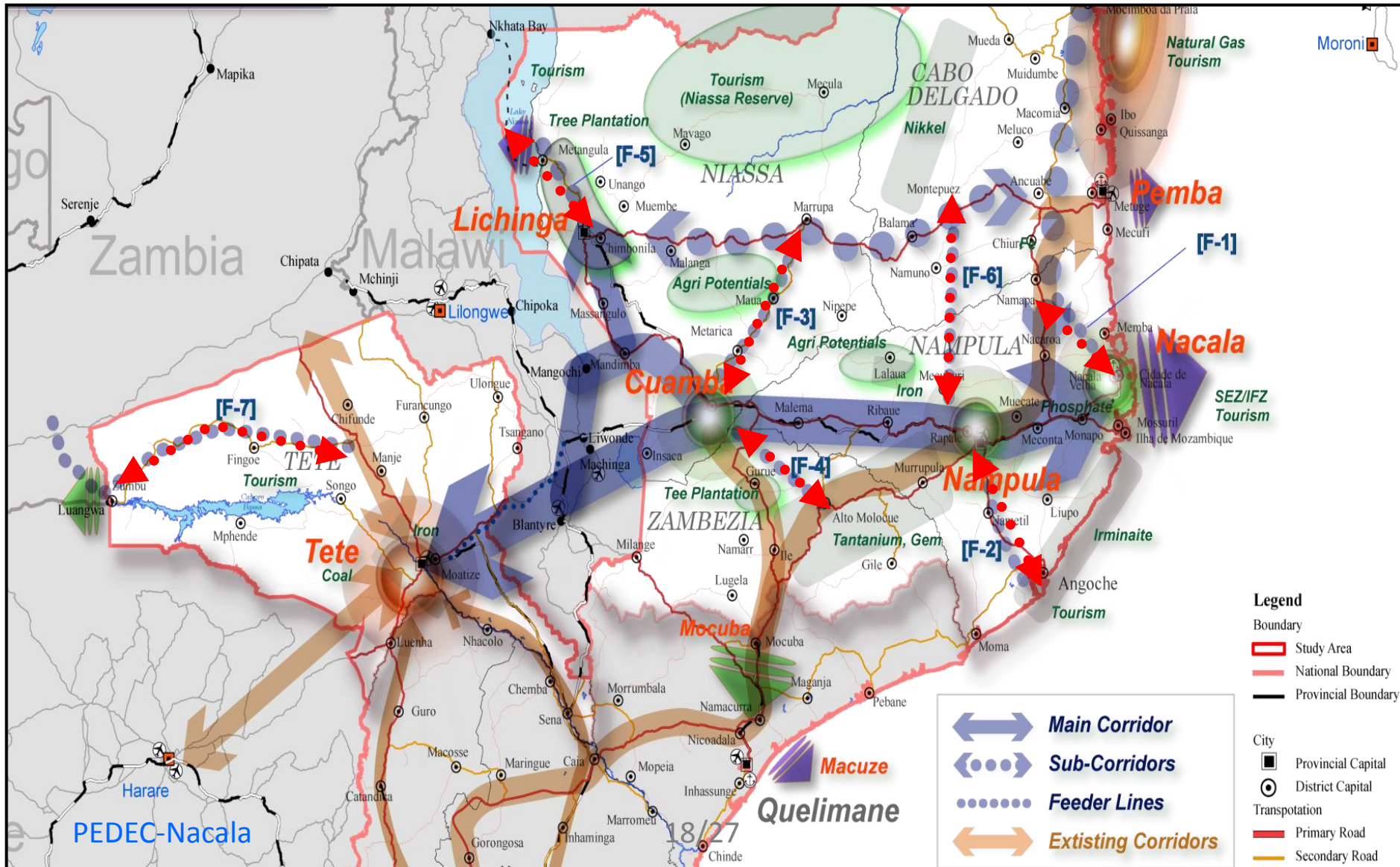
POTENTIAL DEVELOPMENT IN DIFFERENT SECTORS



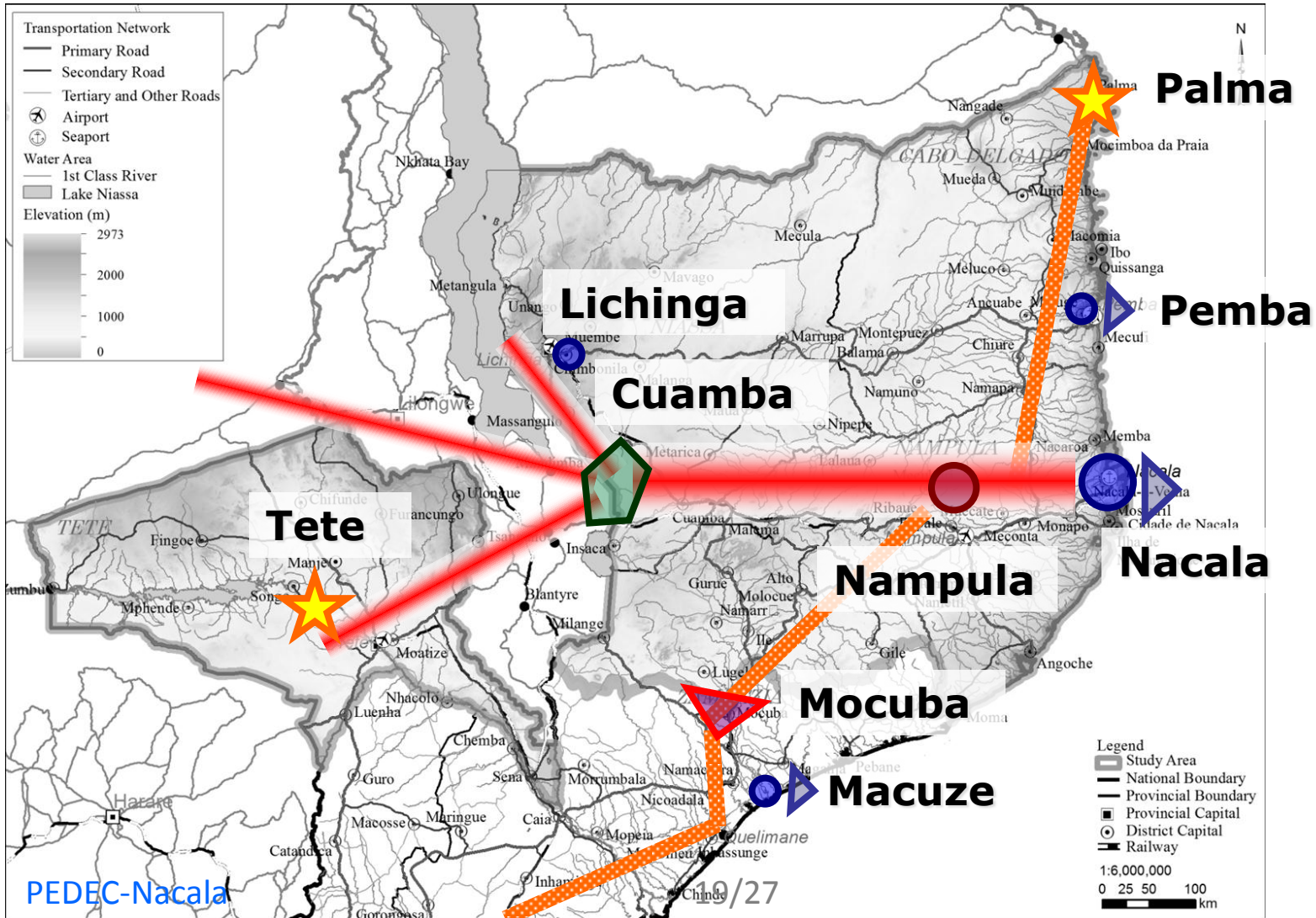
ACTUAL TRANSPORT SYSTEM NACALA CORRIDOR



NACALA CORRIDOR FEEDING ROADS



URBAN DEVELOPMENT





MOZAMBIQUE

Thank you!

www.gazeda.gov.mz

gazeda@gazeda.gov.mz

info@gazeda.gov.mz

dnala@gazeda.gov.mz

+258 823040040

+258 21400631

+258 21400632