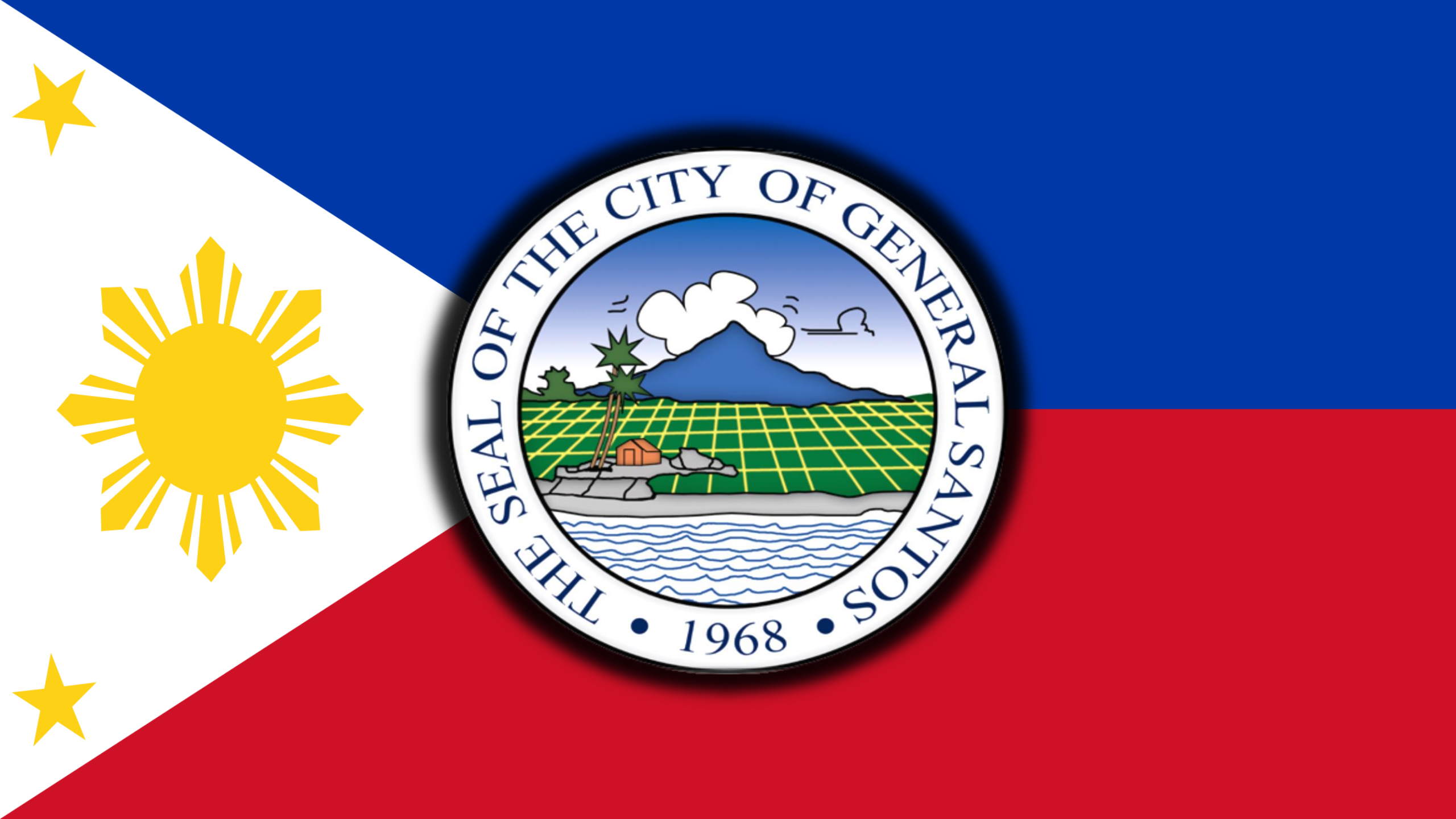
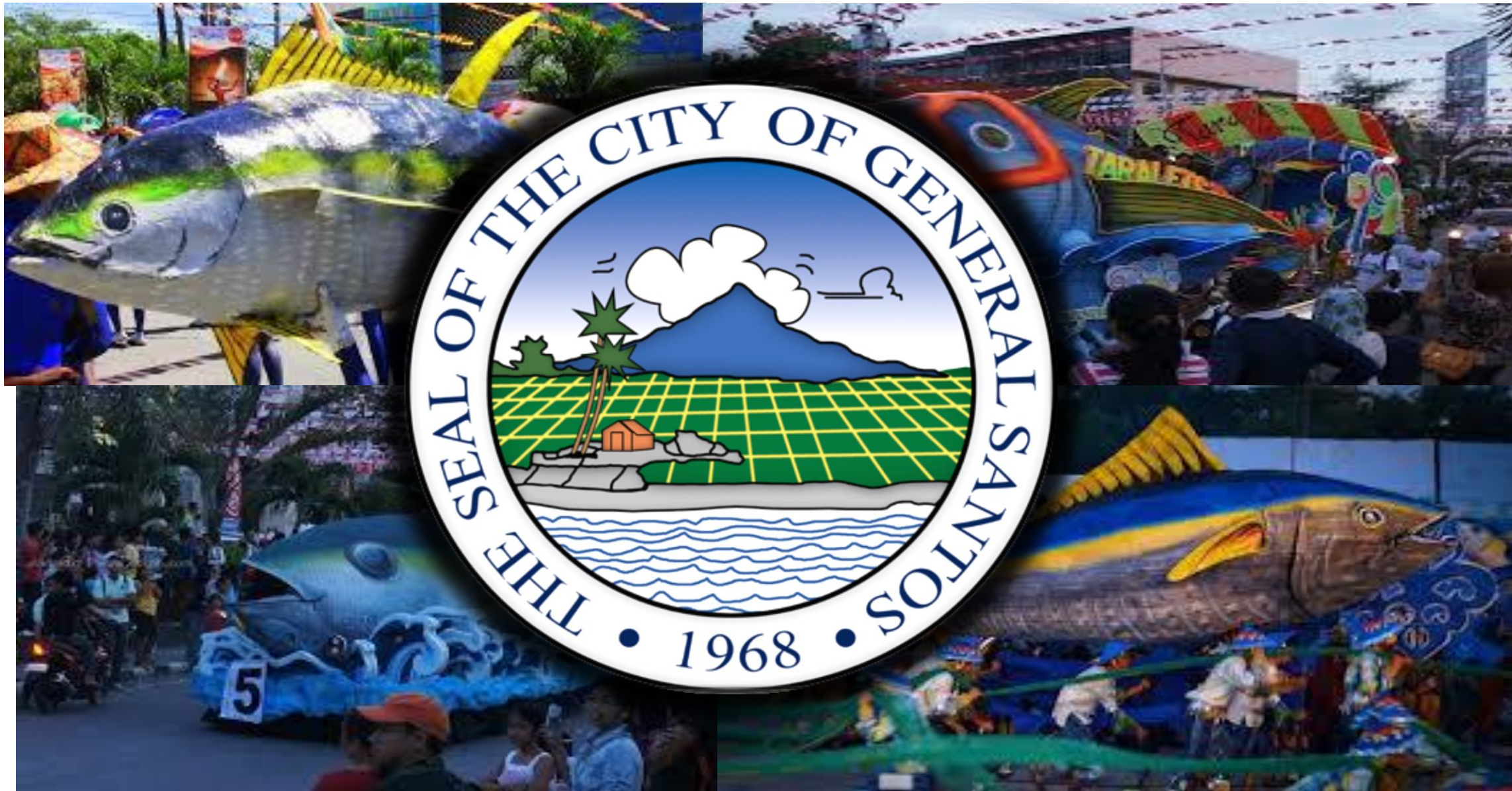


PHILIPPINES

The image features the word "PHILIPPINES" in a large, bold, sans-serif font. The letters are filled with a color gradient that transitions from blue at the top to red at the bottom, matching the colors of the Philippine national flag. A silhouette of the Philippine archipelago is overlaid on the letters, with the map's colors also following the blue-to-red gradient. The entire graphic is set against a solid black background.







WASTE
MANAGEMENT
OFFICE

magandang
San!

**City Ordinance No. 13,
series of 2012**

**“AN ORDINANCE CREATING THE
WASTE MANAGEMENT OFFICE
FOR THE CITY OF GENERAL
SANTOS”**



MANDATES



- **Republic Act No. 9003:**
Philippine Ecological Solid Waste Management Act of 2000
- **Republic Act No. 8749:**
Philippine Clean Air Act of 1999
- **Republic Act No. 9275:**
Philippine Clean Water Act of 2004

❖ **Ordinance No. 01, series of 1990:** Prohibition to use agricultural irrigation system for waste disposal



❖ **Ordinance No. 04, series of 1993:** Motor Vehicle Pollution Control



- ❖ **Ordinance No. 14, series of 1993:**
Prohibition to discharge wastewater and other pollutants into the Sarangani Bay
- ❖ **Ordinance No. 12, series of 2008:**
Ecological Solid Waste Management



Waste Management Practices

- ✓ Residual and Biodegradable waste are only allowed at Sanitary Landfill
- ✓ Continuous advocacy through Information and education campaigns
- ✓ Establishment of Model Point Sources (MPS) in the whole city particularly Government Centers, City Hall, Barangay Hall, Central Public Market, industries and establishments.



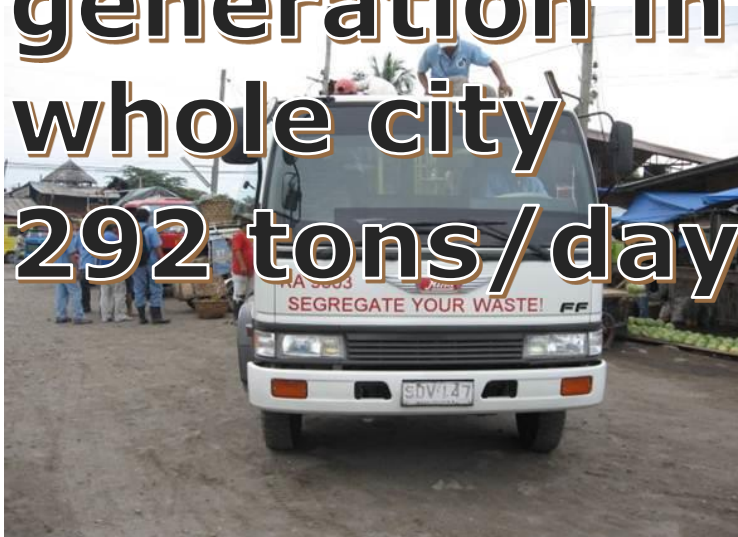
Waste Management Practices

- ✓ Regular inspections to industries and commercial establishment to ensure compliance
- ✓ Industries are required provide a (1) Wastewater Treatment Facility, or (2) Septic Tank, or (3) Grease Traps/Oil and Water Separator
- ✓ Industries and commercial establishments are required to provide (1) Water Scrubber; or (2) Dust Collector; or (3) Deodorizer to mitigate its contribution to air pollution.



**Total solid waste
generation in the
whole city
292 tons/day**

Challenges



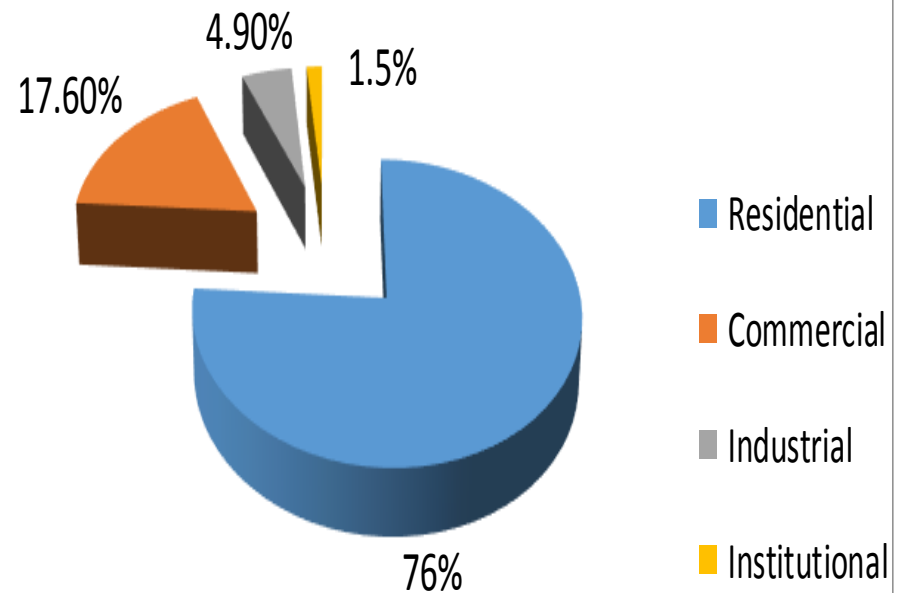
**Only about
31.16% or 91 tons/day
of waste are disposed
at the Sanitary Landfill**

Challenges (cont'd.)

SOLID WASTE GENERATION PER SECTOR

SECTOR	Kg/Day	Kgs/Yr	Tons/ Year	%
Residential	222,302	81,140,230	81,140.23	76
Commercial	51,460	18,782,900	18,782.90	17.6
Industrial	14,387	5,251,255	5251.25	4.9
Institutional	4,423	1,614,395	1614.39	1.5
TOTAL	292,572	106,788,780	106,788.78	100

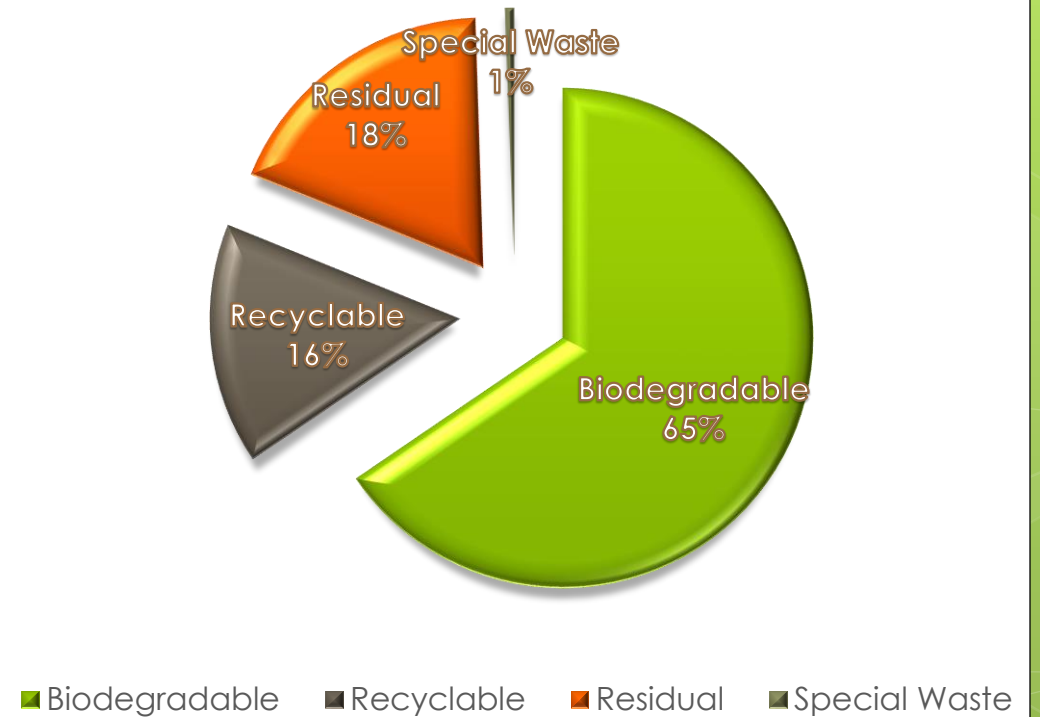
Note: Per Capita Waste Generation as of 2014 WACS Data is 0.55 kg per day for the whole city



Challenges (cont'd.)

Source Sector	Composition in Percent				
	Biodegradable	Recyclable	Residual	Special Waste	Total
FishPort (special collection)	74%	17%	8%	0%	100%
Food Establishments	91%	2%	7%	0%	100%
General Stores	29%	33%	37%	1%	100%
Industries	54%	15%	31%	0%	100%
Institutions	56%	30%	14%	1%	100%
Malls	61%	22%	16%	0%	100%
Public Market	89%	3%	8%	0%	100%
Recreation Centers	77%	11%	12%	0%	100%
Residential	64%	16%	20%	0%	100%
Service Centers	50%	21%	28%	1%	100%
Slaughterhouse (special collection)	71%	0%	29%	0%	100%
Special Waste Sources	20%	43%	20%	17%	100%
Total	65.5%	15.6%	18.4%	0.5%	100%

Percentage of Waste Composition



Challenges

WHERE DOES OUR WASTE END UP?



Abandoned
Buildings



Vacant Lots



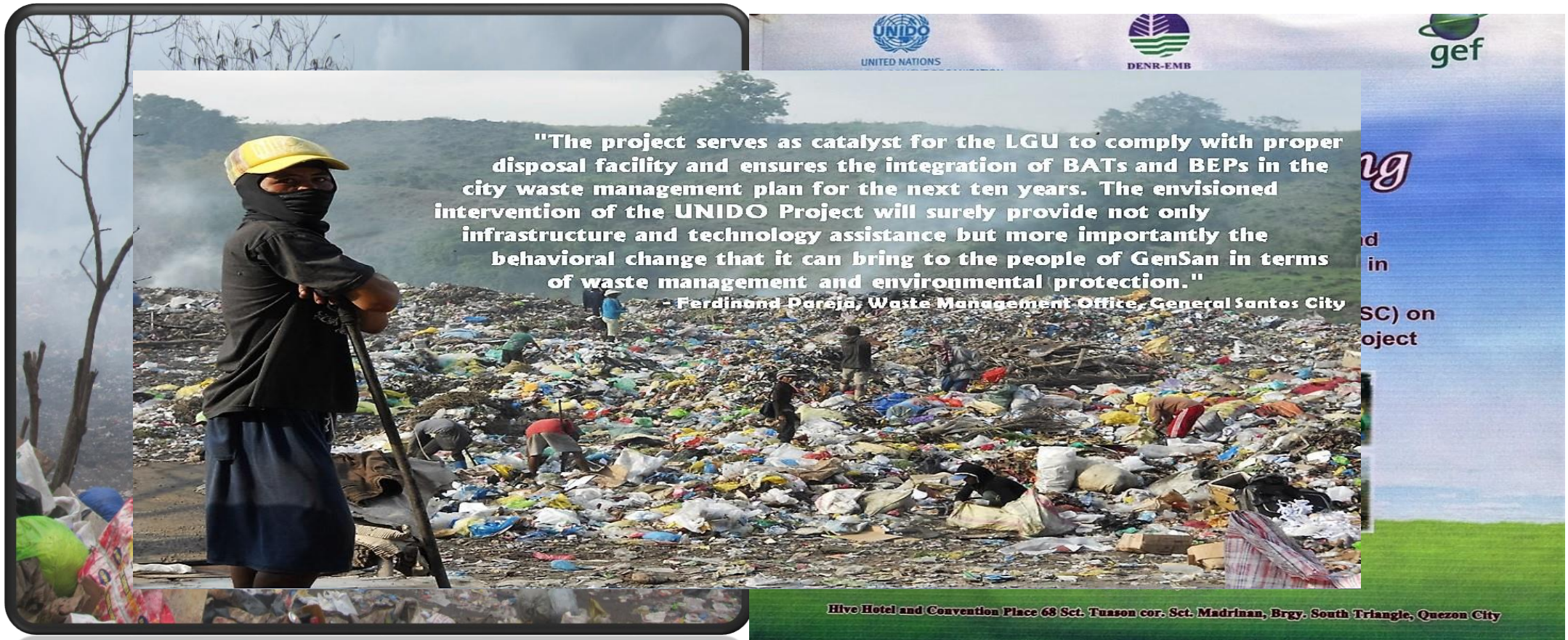
Riverbanks



Street sides

SAFE CLOSURE and POST CLOSURE MAINTENANCE OF CONTROLLED OPEN DUMPSITE

UNIDO ASSISTED PROJECT



IEC Campaign Advocacy



OPENING & OPERATION OF SANITARY LANDFILL

Inauguration: May 3, 2016
Land Area: **63** hectares



OPENING & OPERATION OF SANITARY LANDFILL



Route to Residual
Disposal Area



Material Storage Area



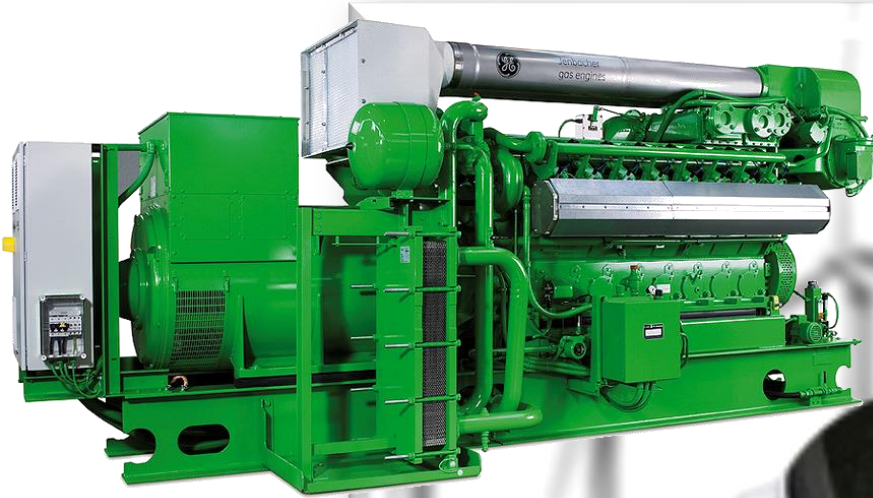
Leachate Equalization



Hazardous Waste Storage Area

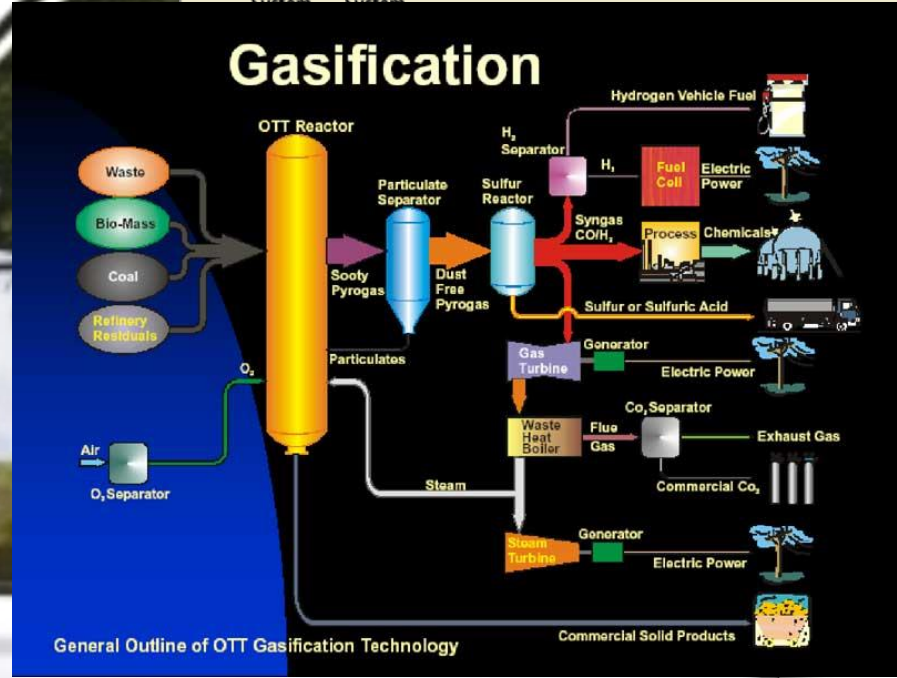
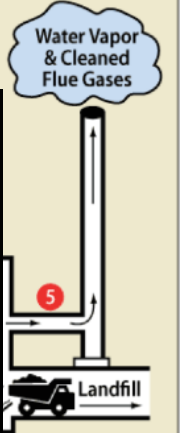


Maintenance Compound



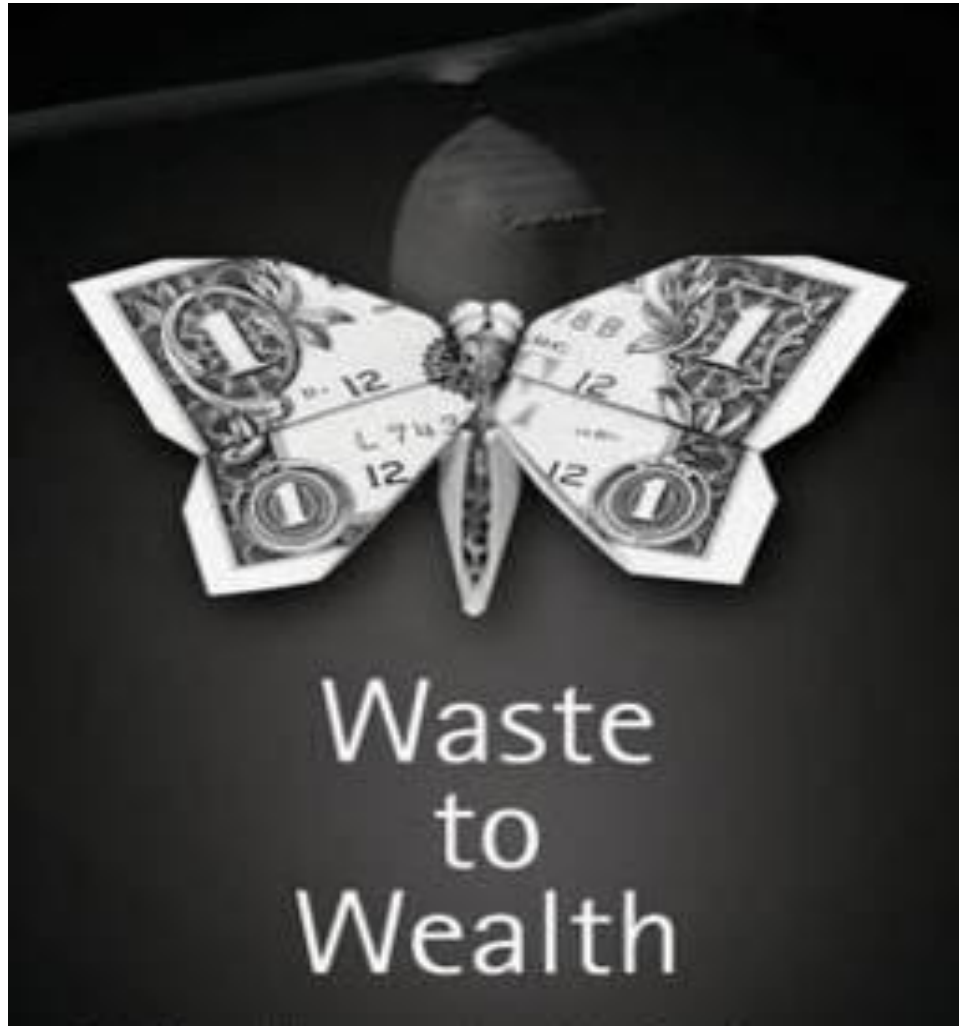
Waste to Energy Plant Diagram

- Pollution Control System**
- 1 Nitrogen Oxide Removal System
 - 2 Mercury & Dioxin Removal System
 - 3 Acid Gas Removal System
 - 4 Particulate Removal System
 - 5 Pollution Control Test



WASTE TO ENERGY

Arts & Crafts



Waste to Wealth (Composting Facility)



Waste to Wealth (Recycling Facility)



Equipment & Supplies



Septage Management System



Wastewater Treatment Plant



HEALTH CARE Waste Management

HOSPITAL and HEALTH CARE
WASTE (HCW)
– Treatment and disposal
Facility



Toxic & Hazardous Waste Disposal Facility



Kill nothing, but time.
Leave nothing, but footprints
Take nothing, but pictures
Keep nothing, but memories.

-John Muir
(1838-1914)
"John of the Mountain"
Environmental Philosopher



Maraming Salamat sa
Inyong Lahat
at
Mabuhay ang Kalikasan!

どうもありがとう
ございました。


magandang San!