

SC° ZONE'

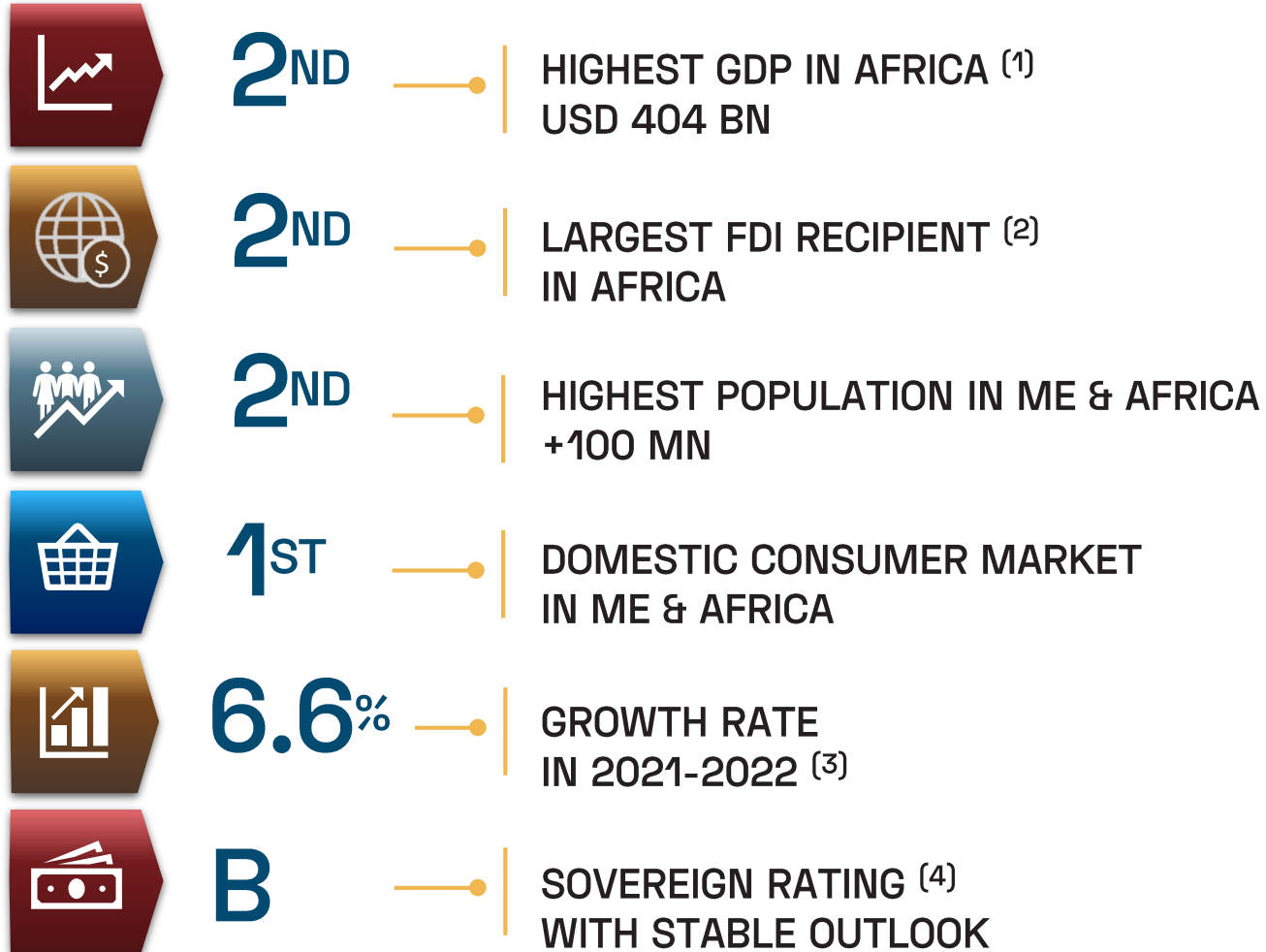
CAI 30°02'32"N 31°13'57"E

SUZ 29°42'49"N 32°18'17"E

PSD 31°15'33"N 32°18'10"E

المنطقة الاقتصادية
لقناة السويس
SUEZ CANAL ECONOMIC ZONE

Why Egypt



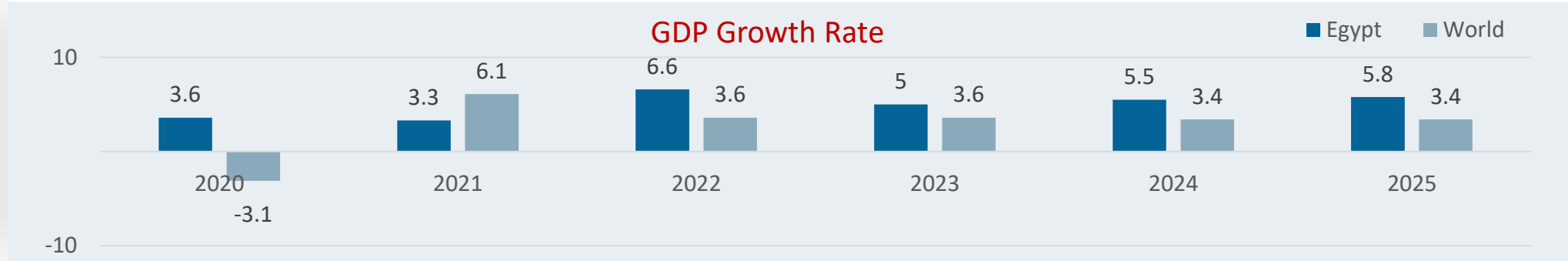
Source:

- (1) The World Bank Group, 2021
- (2) General Authority for Investment, Egypt, 2022
- (3) The International Monetary Fund, 2022
- (4) S&P Global, November 2022

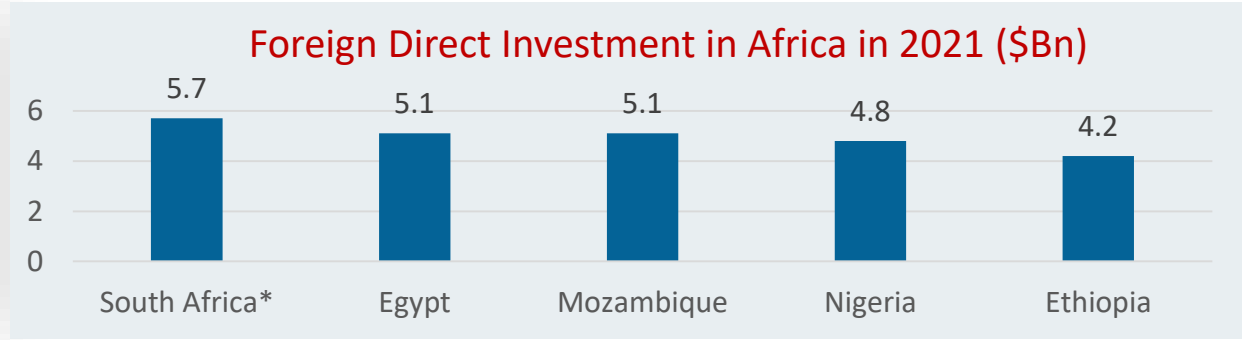


Leading Economy & Growing Investment Hub

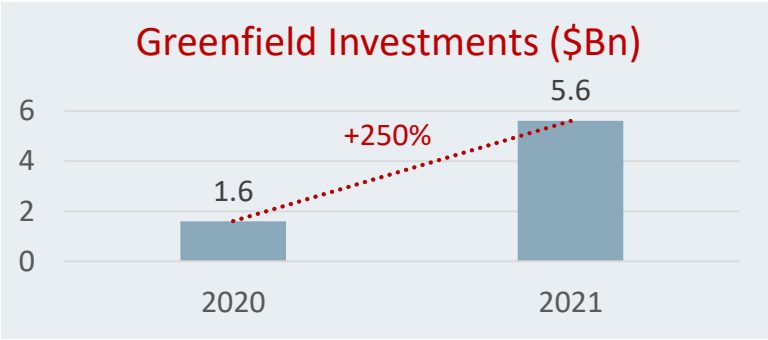
GROWTH RATE EXCEEDING GLOBAL AVERAGES



EGYPT IS AN AFRICAN FDI DESTINATION



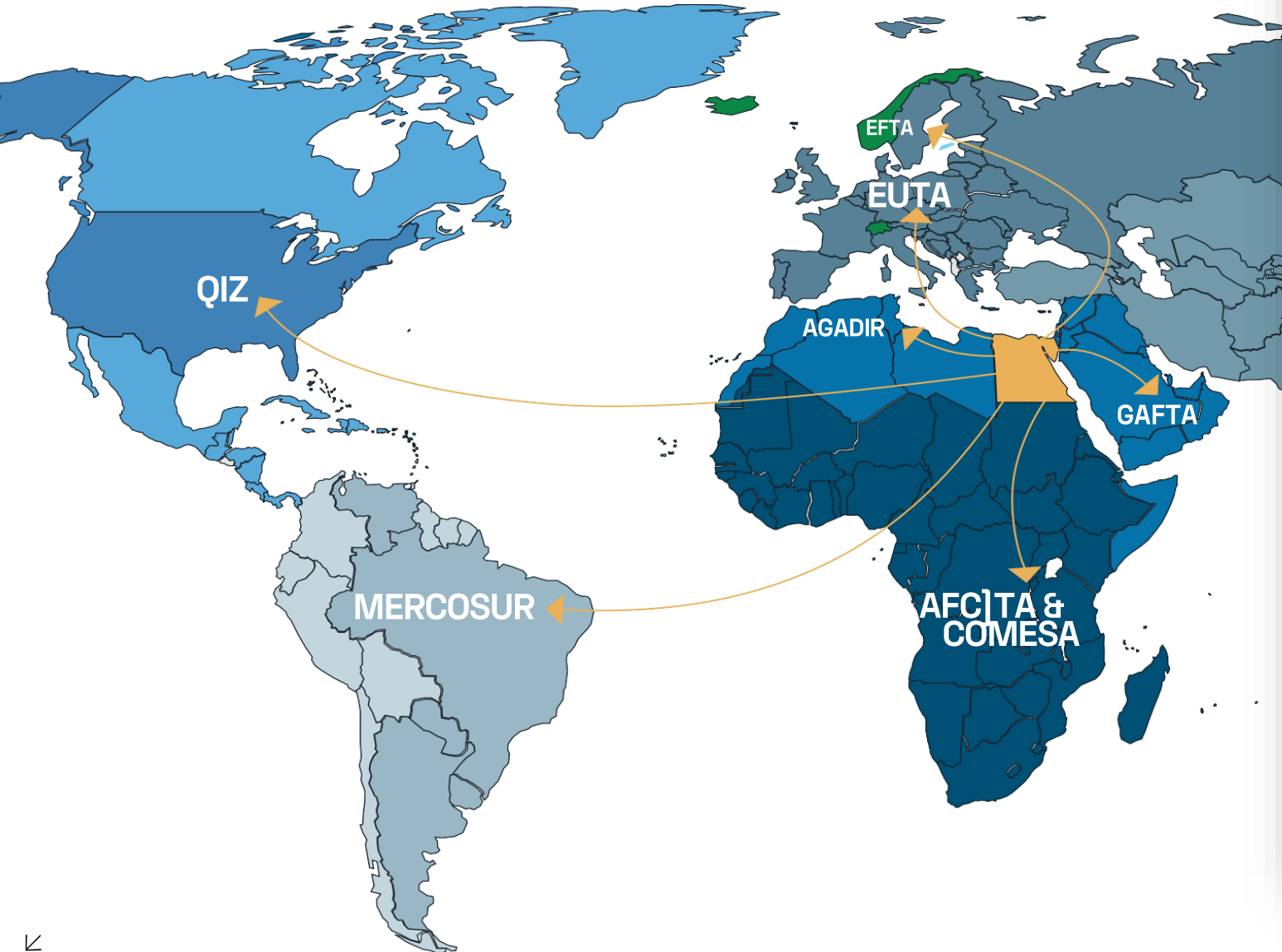
* Excluding Naspers & Prosus Deal



SIGNIFICANT PROGRESS IN STARTING A BUSINESS



Markets Accessibility



100%

CUSTOMS EXEMPTION

With Free Trade Agreements

100Mn

CONSUMERS

Accessing a promising domestic market in Egypt

2Bn

CONSUMERS ACCESSIBILITY

In the international market benefiting from multiple free trade agreements

01

STRATEGIC FACTS

About SCZONE

SCZONE Facts

455 ^{KM²}
TOTAL AREA

100 ^K
DIRECT &
INDIRECT JOBS

6
SEA MAIN
PORTS

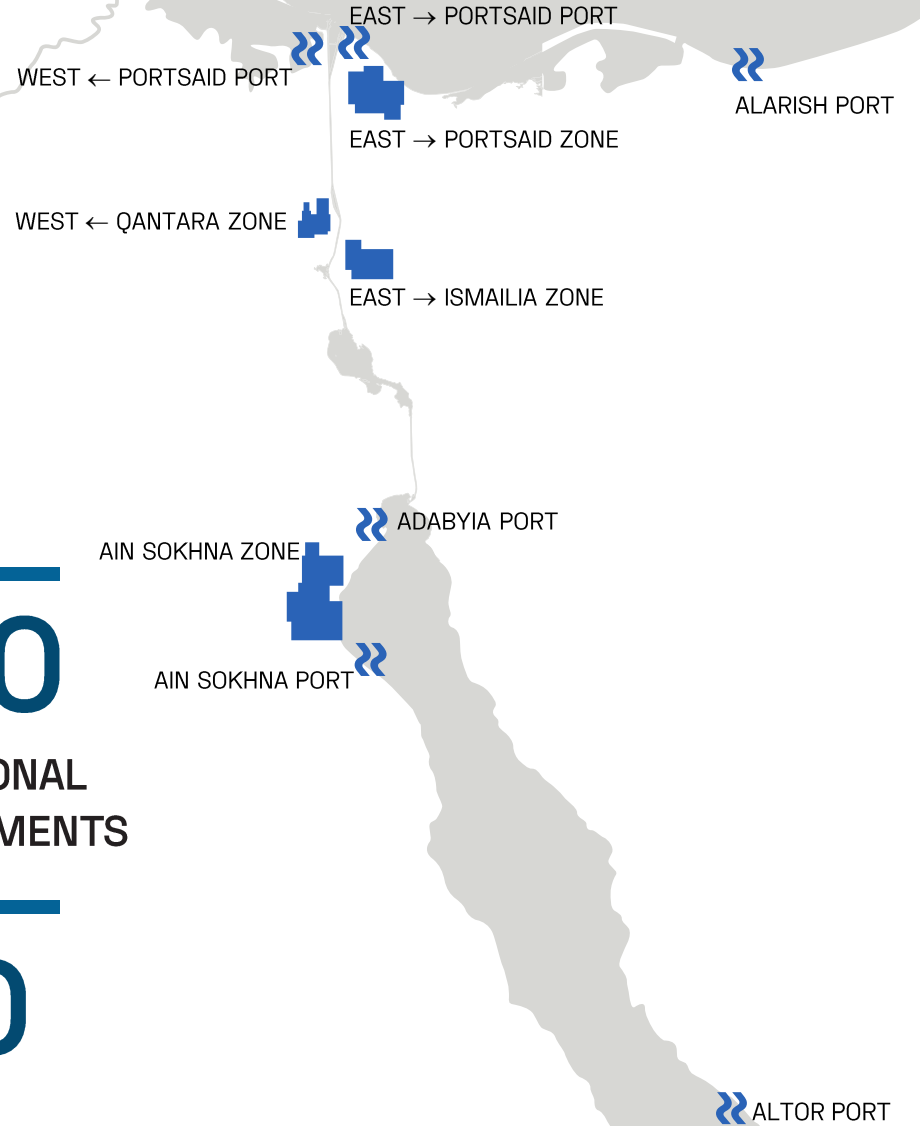
3
MAIN PORTS
OPERATORS

4
INDUSTRIAL
ZONES

14
INDUSTRIAL
DEVELOPERS

300
OPERATIONAL
ESTABLISHMENTS

90
PORT
ESTABLISHMENTS



Strategic Location

A promising investment destination comprising 4 industrial zones & 6 sea ports, around the main global maritime trade route (Suez Canal), passing through it:

12%

INTERNATIONAL
TRADE

10%

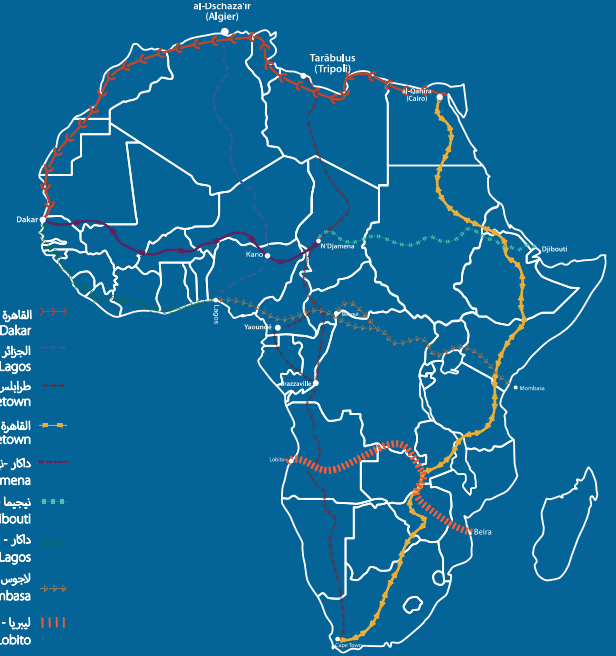
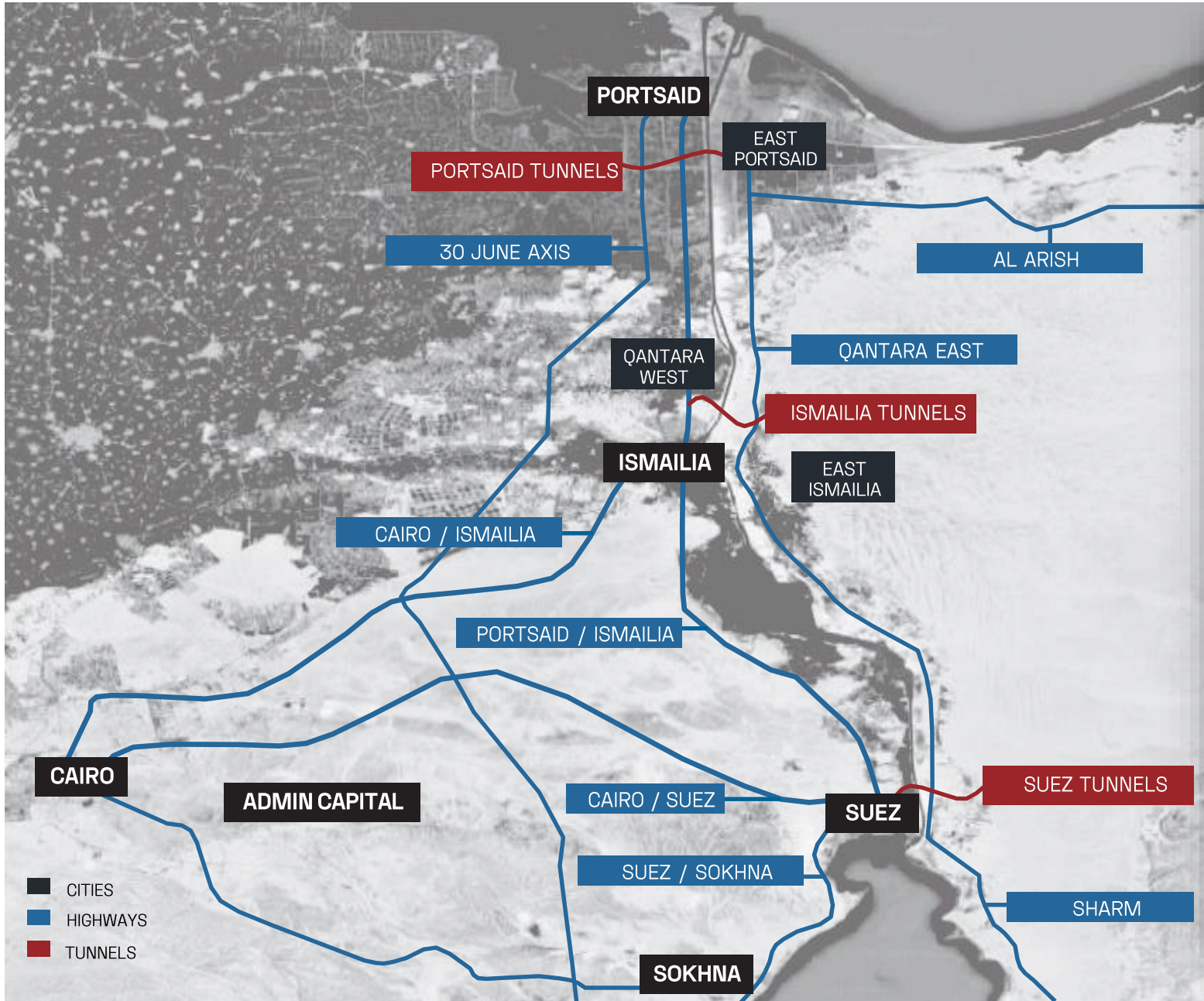
SEABORNE
TRADE

20K

SHIPS PER
YEAR

● Industrial Zones ● Ports





Regional Context

SCZONE is well connected to the new modern roads network of Egypt, and enjoys direct connection to the new Suez Canal tunnels facilitating transportation between its two banks.

02 —
FOUR ZONES
Industrial Zones



SOKHNA Industrial Zone



One of the world's largest industrial complexes directly connected and integrated to Sokhna Port



186 km²

Total Area

+270

Establishments

13

Industrial Developer

80 km²

Developers Area

EAST PORTSAID Industrial Zone

A promising investment area at the northern entrance of the Suez Canal comprising of logistics and industrial zones, integrated to east Port Said Port



64 km²

Total Area

+10

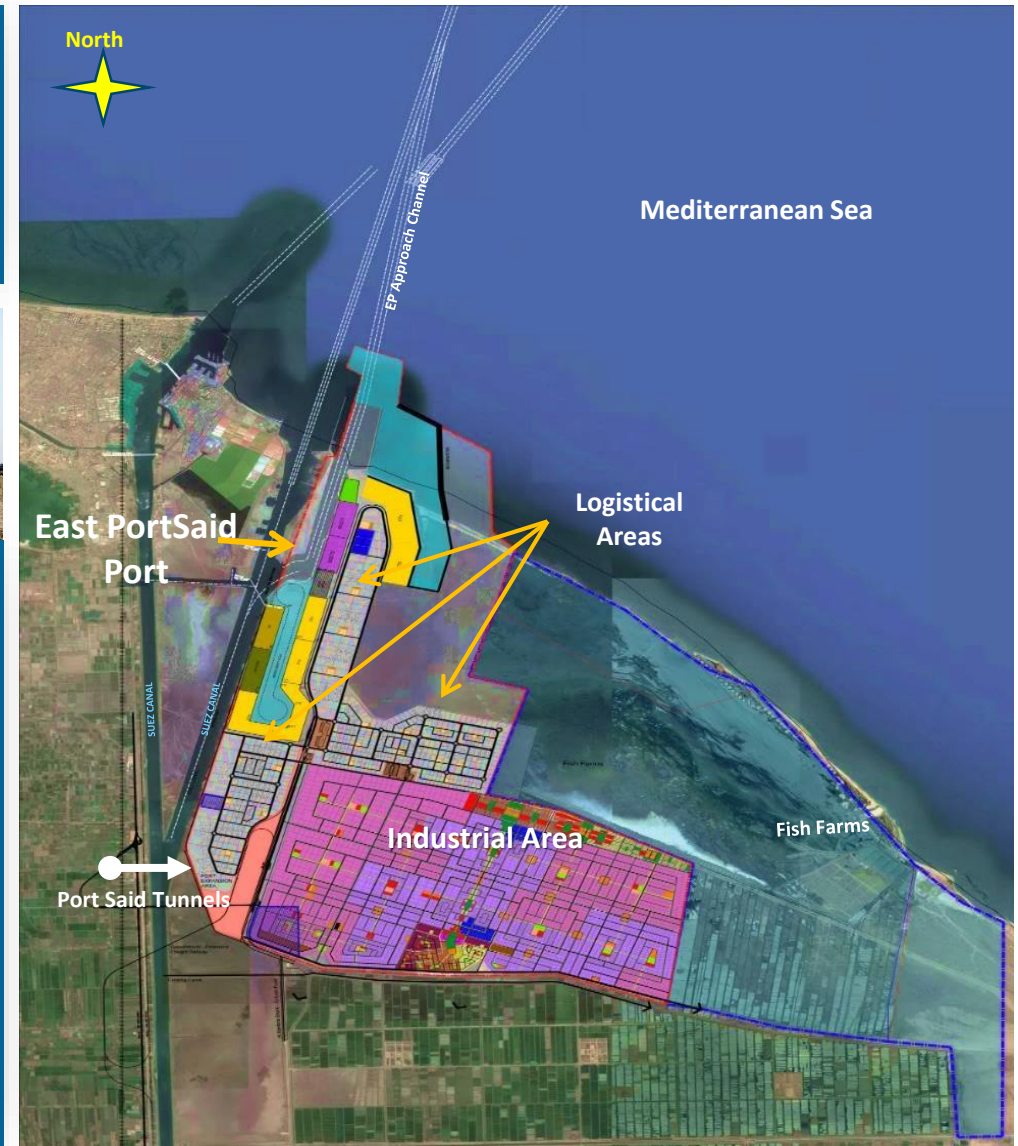
Establishments

1

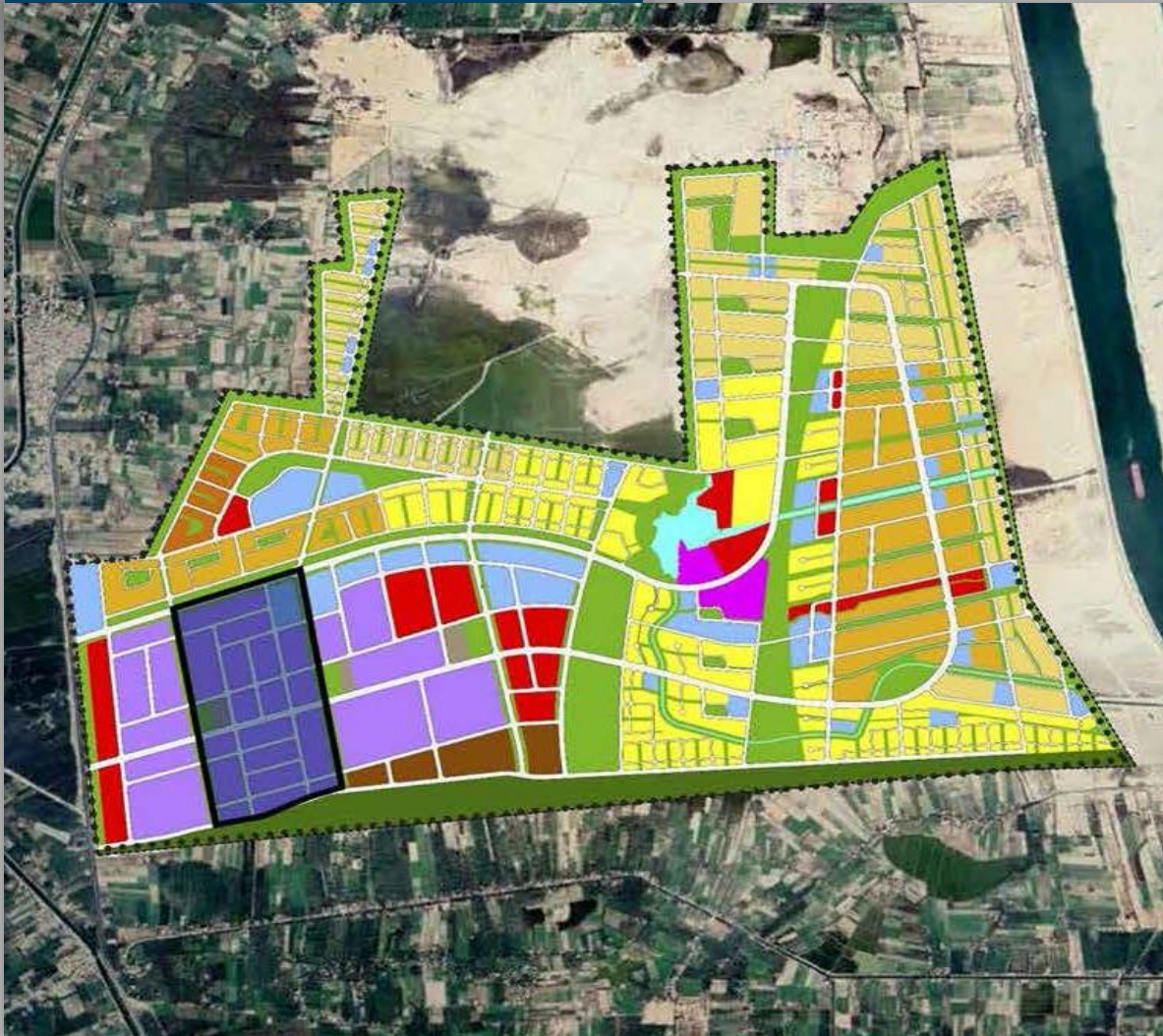
Industrial Developer

16 km²

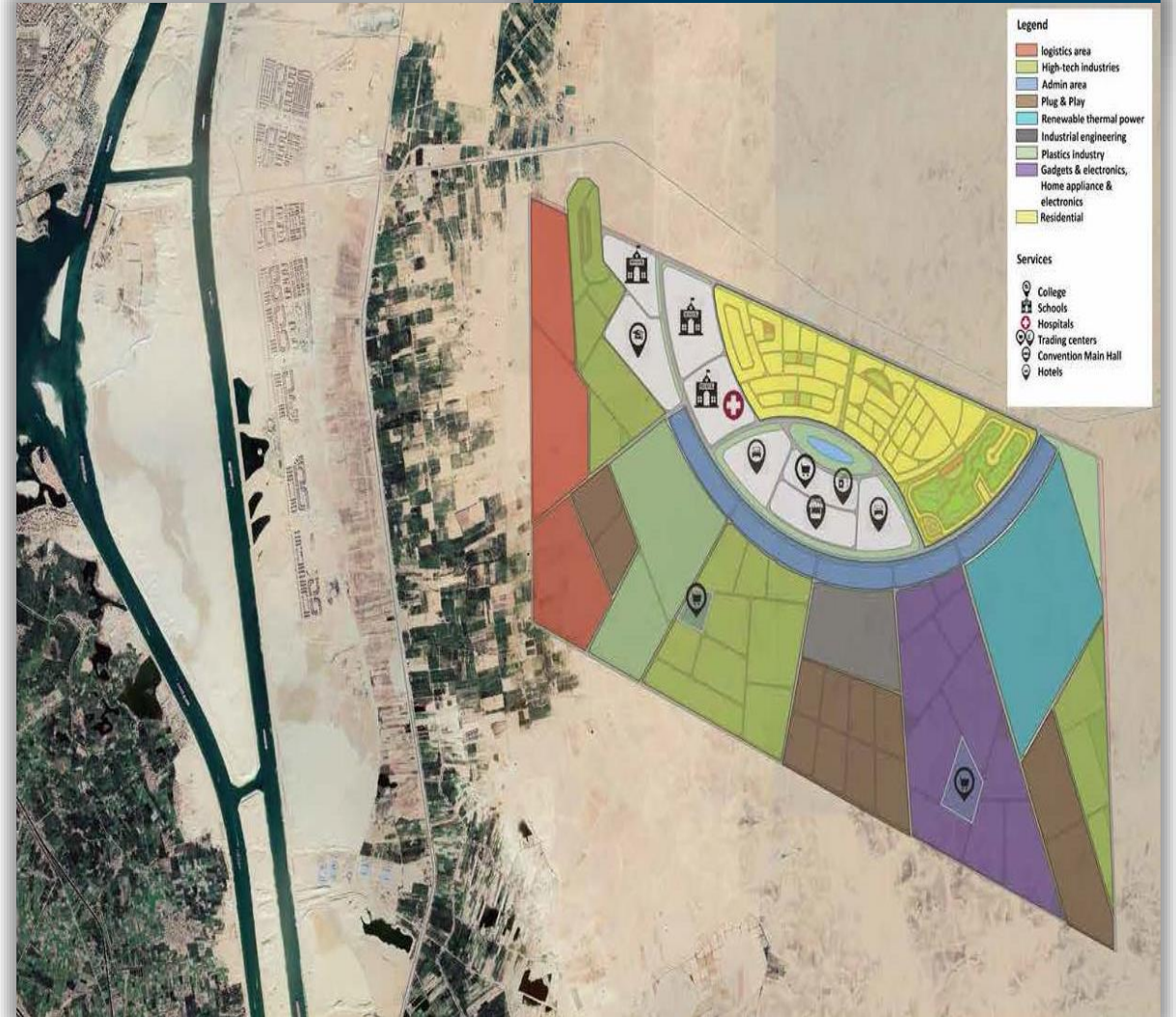
Developers Area



Qantara West



East Ismailia



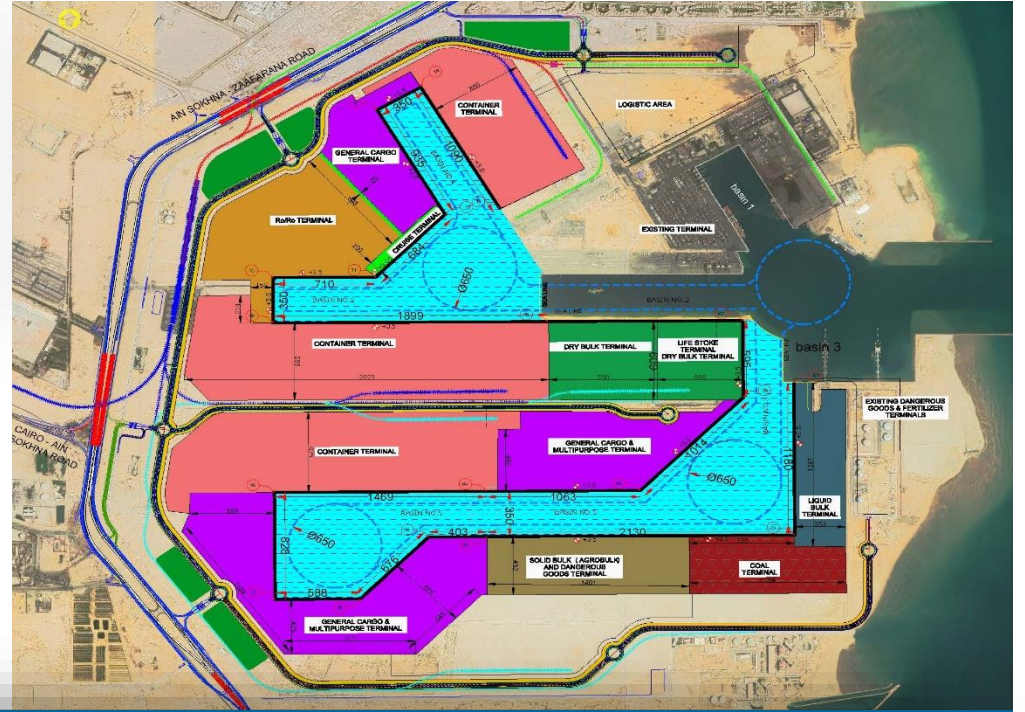
03 — SIX SEA PORTS

Ports

INTER EGYPT

SOKHNA Port

Egypt's main gateway on the Red Sea, at the southern entrance to the Suez Canal, on the west coast of the Gulf of Suez



25 km²

Total Area

18 km

New Quay

18 m

Port Depth

5.3 km²

New Logistics Area

10 km²

Railways

to be connected to (Sokhna/New Almain Electric Train) under construction

ADABEYA Port

Located at the northern end of the Gulf of Suez, 17 km away from Suez City



1.67 km²

Total Area

1.4 km

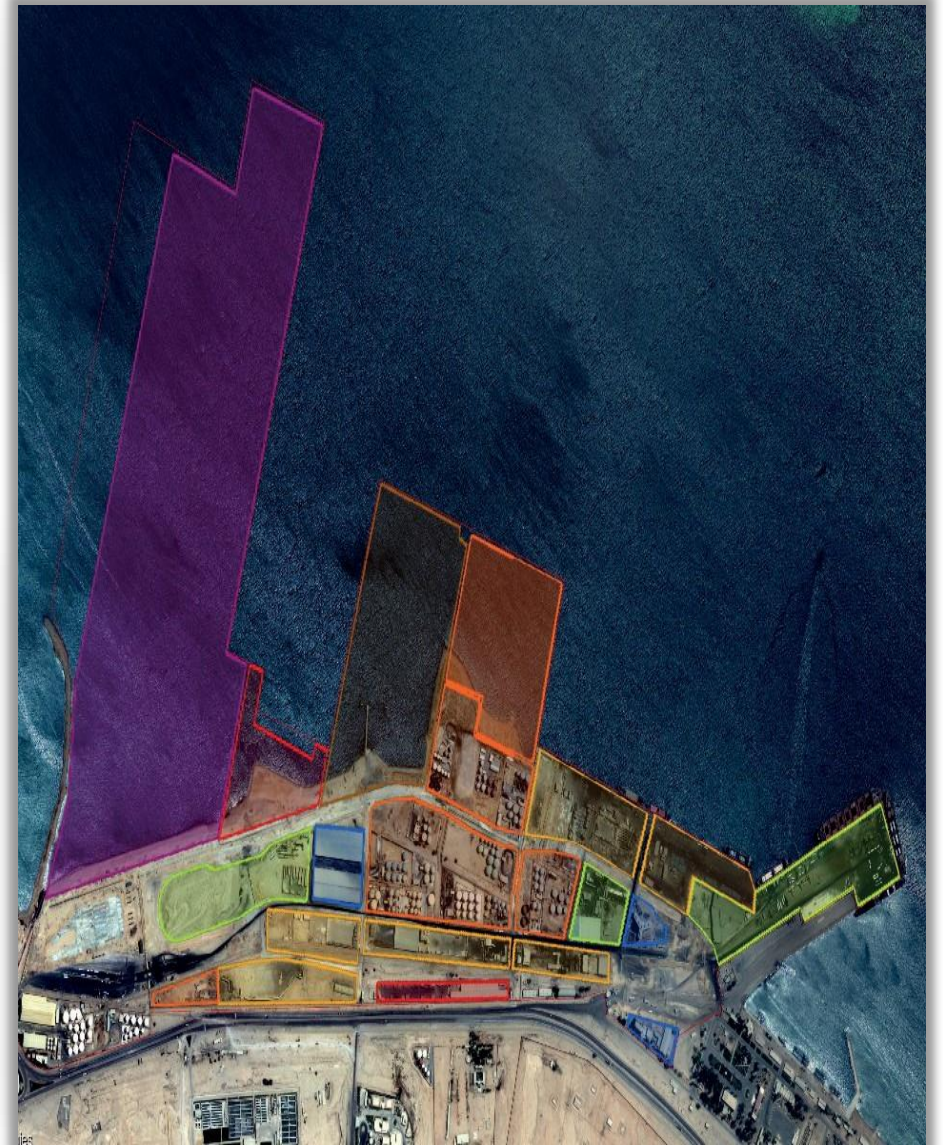
Quay Length

650 m

Turning Circle

9-14 m

Port Depth



EAST PORTSAID Port



Located alongside the Suez Canal, with sheltered deep water facilities capable of accommodating very large vessels



9.5 km²

Total Area

5 km

New Quay

18 m

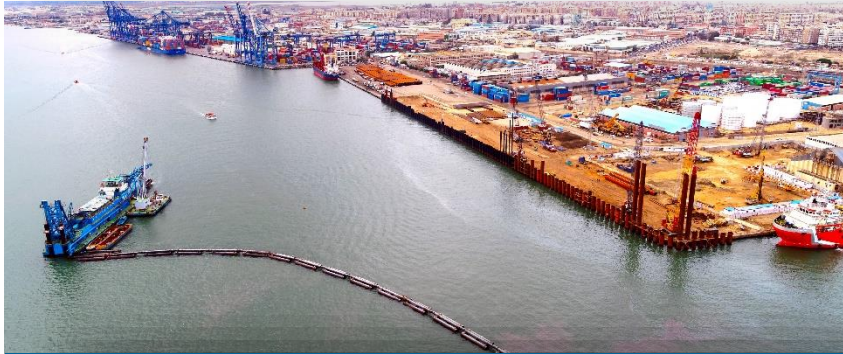
Port Depth

27 km²

Logistics Area

WEST PORTSAID Port

The Port is situated at the Northern entrance of the Suez Canal at the crossroad of the main world sea trade route between the East and West via the Suez Canal



1 km²

Total Area

3.2 km

Total Quay Length

670 m

New Quay Length

8-15 m

Port Length

AL-ARISH Port



The only port in North Sinai, suitable for handling Dry bulk activities up to 6,000 tons.



1.55 km²

Total Area

1.5 km

Total Quay Length

915 m

New Quay Length

7-15 m

Port Depth

AL-TOR Port

Currently used as a small marine services berth to serve the petroleum services activities for the Gulf of Suez region.



0.5 km²

Total Area

75 m

Quay Length

5 m

Port Depth

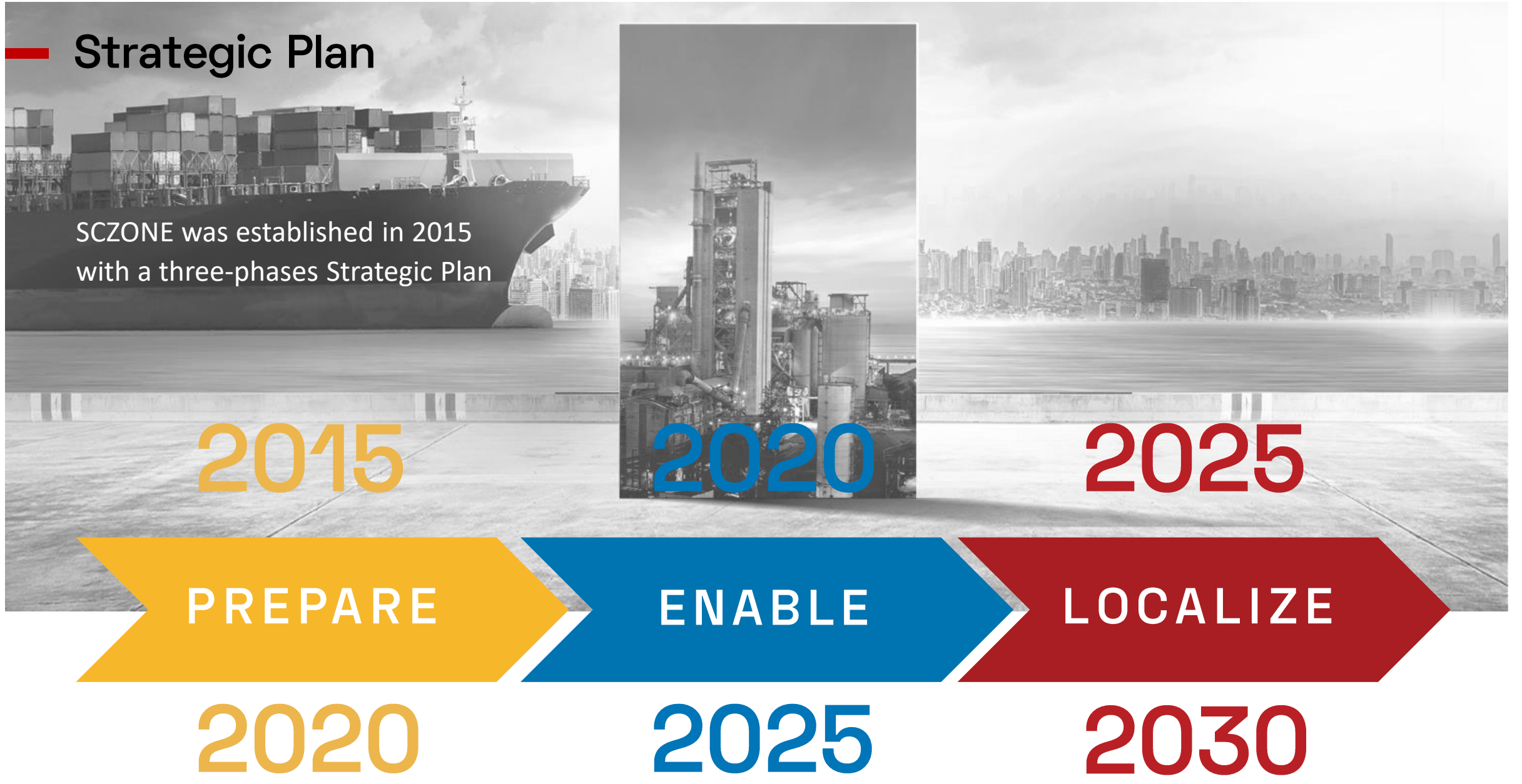


04

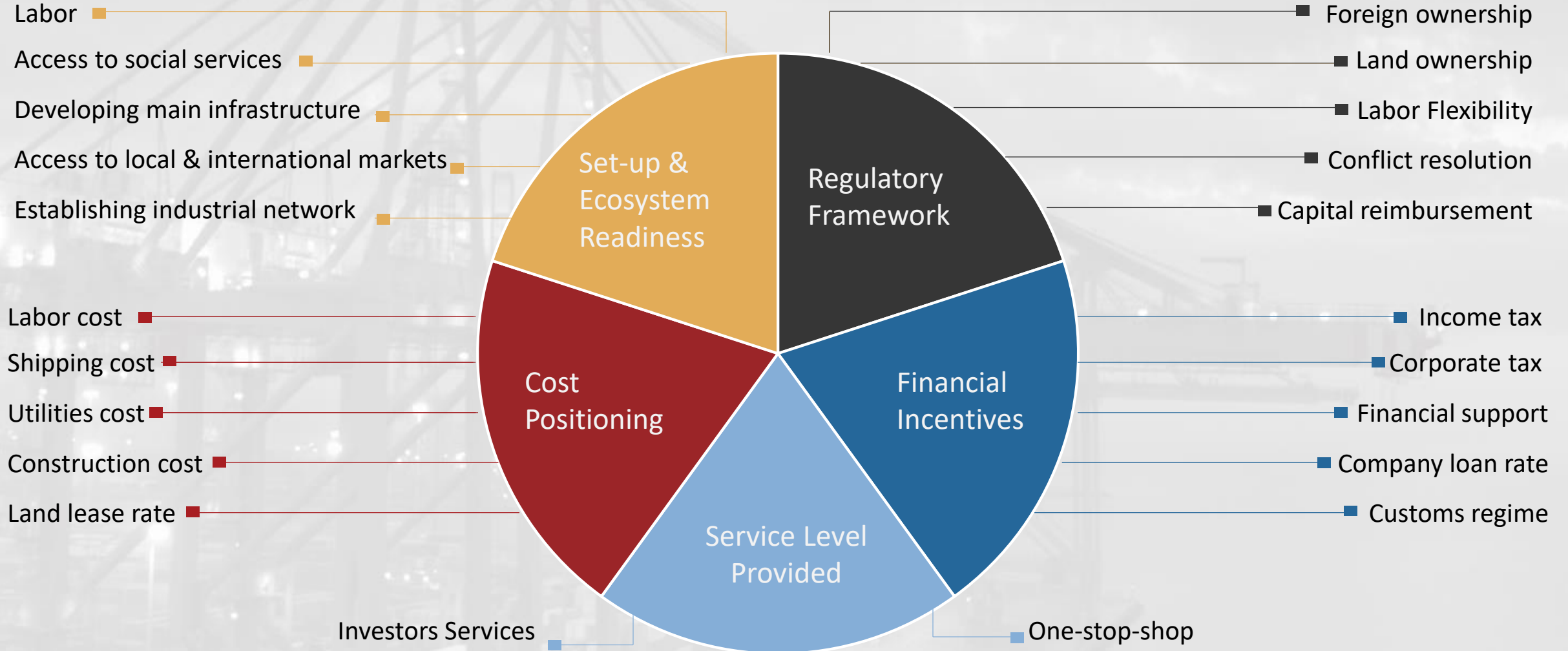
—
2020 - 2025

SCZONE Strategy

INTER EGYPT



Strategic Pillars



05



WATER, POWER & ROADS

Utilities & Infrastructure

Utilities and Infrastructure

\$2.8Bn



NATURAL GAS

1 PRESSURE REDUCTION UNIT
& PIPELINE NETWORK



COMMUNICATION

3 COMM. CENTRAL
& FIBER OPTICS CABLES



POWER SUPPLY

7 POWER
SUB-STATION
13 POWER
DISTRIBUTOR



SEWAGE TREATMENT

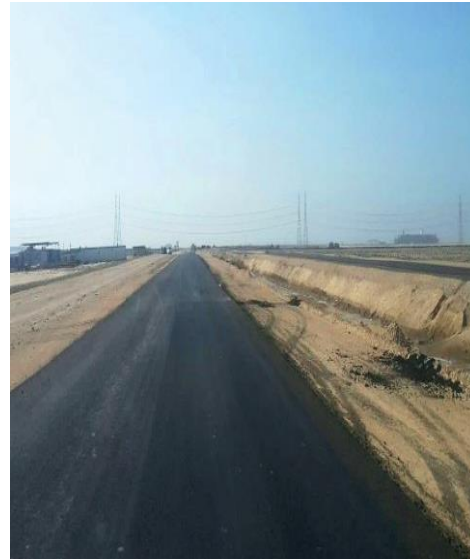
2 TREATMENT PLANT
& PIPELINES
6 SEWAGE TREAT.
COMPACT UNITS



WATER SUPPLY

2 SEA WATER
DESALINATION PLANT
3 WATER LIFT PLANT
& STORAGE

Utilities and Infrastructure



06 — REGULATIONS

Incentives

Incentives



0% CUSTOM TAX

- 0% Customs on all project's components imported from abroad under the condition of exporting the final products
- In the case of exporting to the local market: custom tax will be applied on the imported components only



0% VALUE ADD TAX

- 0% VAT applied whether importing from local or foreign markets to SCZONE, on all procurements required for manufacturing, production, operation (raw materials, components, spare parts, etc.)
- 14% VAT is applied on exporting products from SCZONE to the local market



50% CORPORATE TAX REFUND (Valid for 7 Years)

- Discount on Corporate Tax (net profit) equivalent to 50% of project investment costs
- Discount shall be attributed maximum to 80% from the paid-up capital

Incentives



100% FOREIGN OWNERSHIP ALLOWED

- Foreign companies or foreign branches are allowed to import production inputs or final products from the mother company.



5-YEAR RESIDENCY PERMIT TO FOREIGN INVESTORS

- Foreign investors have the right to obtain residency for a period of 5 continuous years, renewable for similar periods throughout the duration of the project



LABOR-INTENSIVE PROJECTS USING LOCAL COMPONENT

- Reduced prices or facilitate the payment of the value of the energy
- Full/Partial reimbursement of utilities cost done by investors on the project's land
- Partially/fully pay the insurance share of Egyptian employees & the employers for specified period



Incentives



EXPORT & IMPORT REGULATION

- Special rules governing the import and export from the SCZONE
- Reducing cost & time of regulatory examination of shipments
- Treating the end product of SCZONE industrial establishments as local products



NEW CUSTOMS GUIDE & MANUAL

- Creating an integrated industrial community
- Establishing a logistic platform to serving international trade and SCZONE
- Reducing time of release of shipments



EXPORT SUPPORT PROGRAM

- Industrial manufacturers for export purposes at SCZONE will benefit from the program
- Enhancing the competitiveness at foreign markets

Incentives

ONE

STOP

SHOP

SCZONE's One-Stop-Shop is a unique business model, creating an ideal business environment through:

- Facilitation of all services required for projects startup effectively & efficiently
- Simplification of procedures and documents
- Elimination of bureaucracy through more streamlined procedures
- Minimization of administrative and financial burdens
- Digitalization of E-Services will be "LIVE" during the 2nd half of 2023



Strategy & Objectives

2020

ENABLE

2025

Dynamically contribute to Egypt's growth rate, while fostering SCZONE's position as an international Investment hub and an export platform with a distinctive access to Africa.



Capitalize on SCZONE's role as a global logistics hub a mid international supply chains



Introduce an effective mechanism for maritime services and bunkering facilities



Localize targeted industries to substitute imports



Target investments and attract international shipping lines to the ports



Adopt industrial clusters policy for Ports and Industrial Zones



Develop platforms for small and medium enterprises



Apply a world-class infrastructure



Establish financial, commercial and services centers

07 — Targeted Sectors & Industrial Clusters

INTER EGYPT

Targeted Sectors & Industries



Logistics



Vocational & Maintenance Centers



Data Centers



Bunkering Conventional/Green

4 SERVICES

INDUSTRIES 17



Green Fuel



Electrolyzers



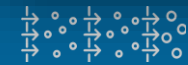
Wind Turbines



Solar PV



Petrochemicals



Water Desal. Membranes



Automotive



Rolling Stock



Electric Batteries



Car Tires



Casting & Foundry



Building Materials



Pharmaceutical



Active Pharma Ingredients



Medical Equipment



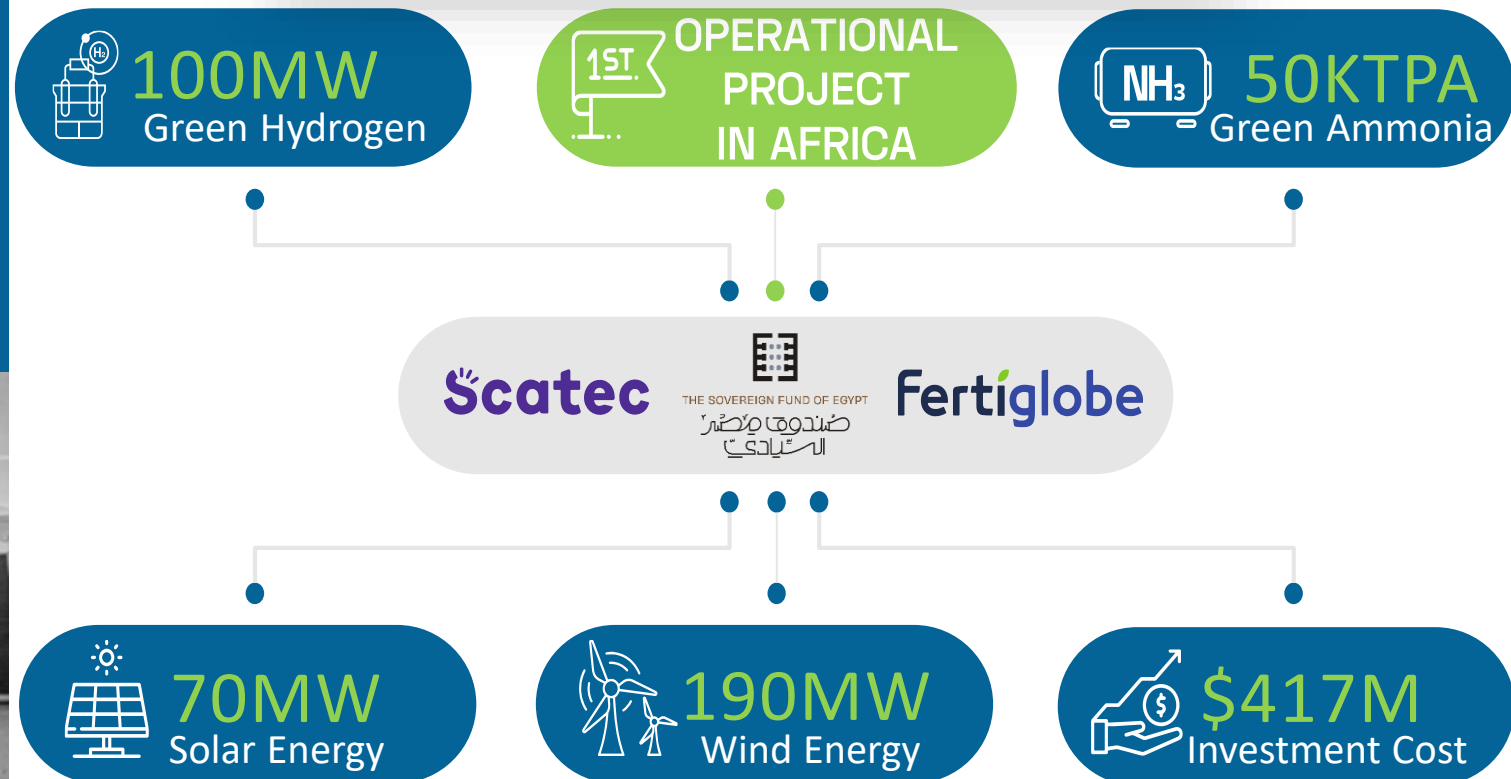
Textiles



Agribusiness

H₂ Production at SCZONE

H.E. President Abdel Fattah El-Sisi President of the Arab Republic of Egypt and H.E. Jonas Gahr Støre the Norwegian Prime Minister, inaugurated the first integrated green hydrogen plant in Africa during the Leaders Summit at COP27, located at SCZONE's Sokhna Industrial Area.



Green Fuel Industrial Cluster

In response to the rising global demand, and capitalizing on SCZONE's strategic location, we work on localizing the GREEN FUEL INDUSTRY at our Industrial Areas & Ports.

Hence, the SCZONE signed:

23 MOUs

- ACME
- Actis
- ACWA Power
- Alcazar
- Benchmark
- British Petroleum
- DAI-Infrastruktur
- Energy China
- K&K
- Maersk
- MEP
- Ocior Energy
- TAQA Arabia
- H2 Industries

9

FRAMEWORK AGREEMENTS (SIGNED)

15M

TONS/YEAR
Estimated Production

85Bn

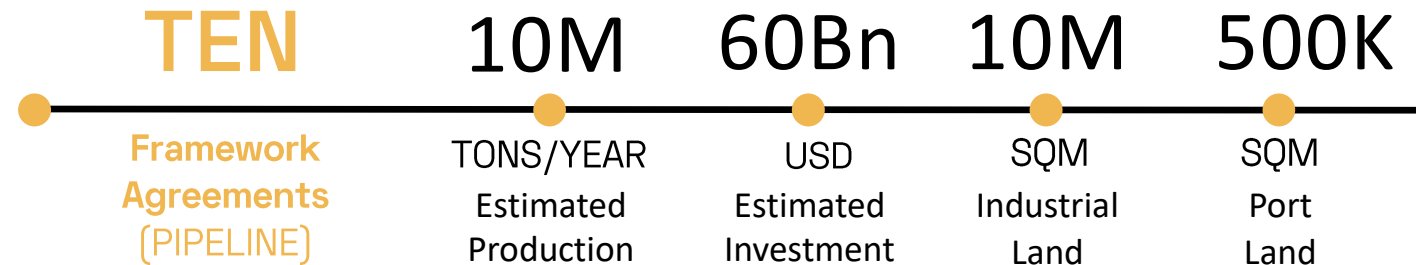
USD
Estimated Investment

32M

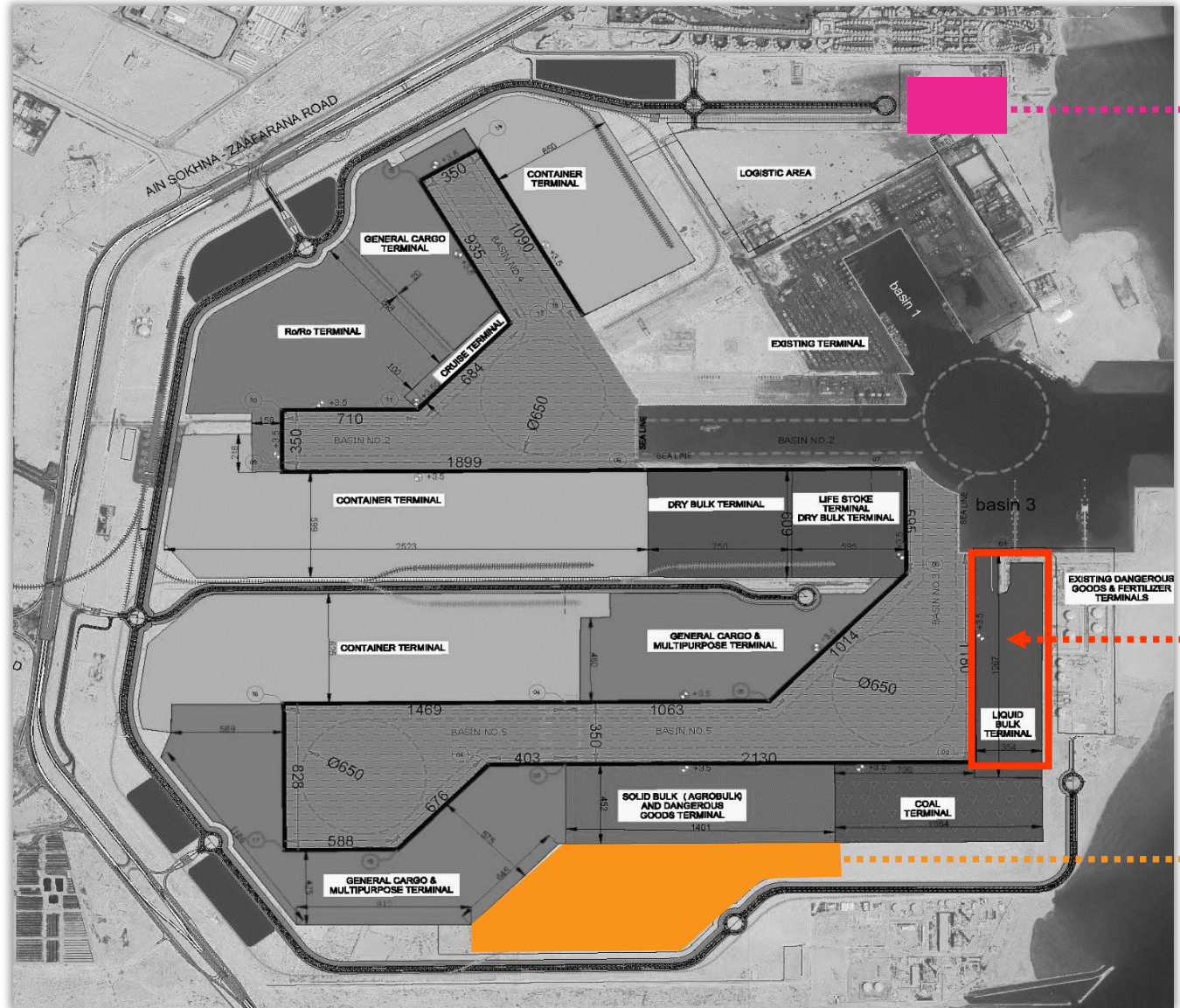
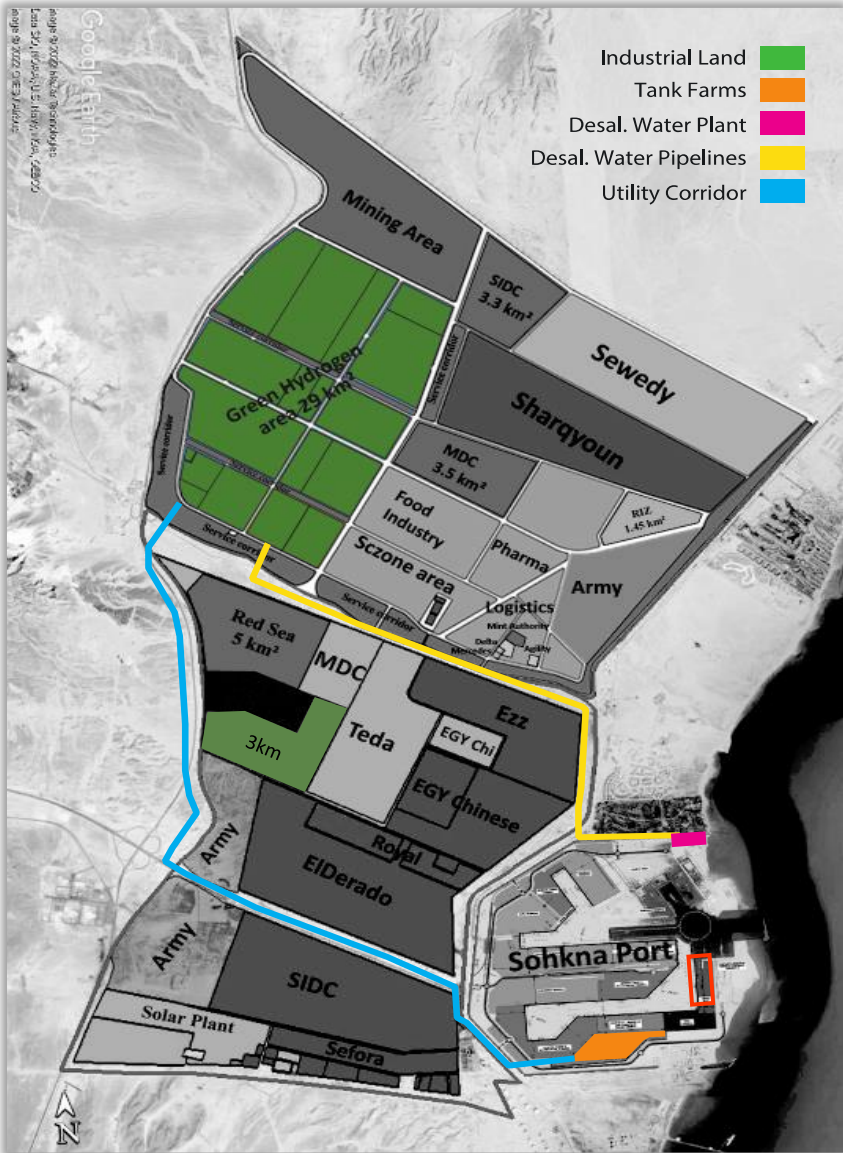
SQM
Industrial Land

700K

SQM
Port Land



Green Fuel Cluster at Sokhna

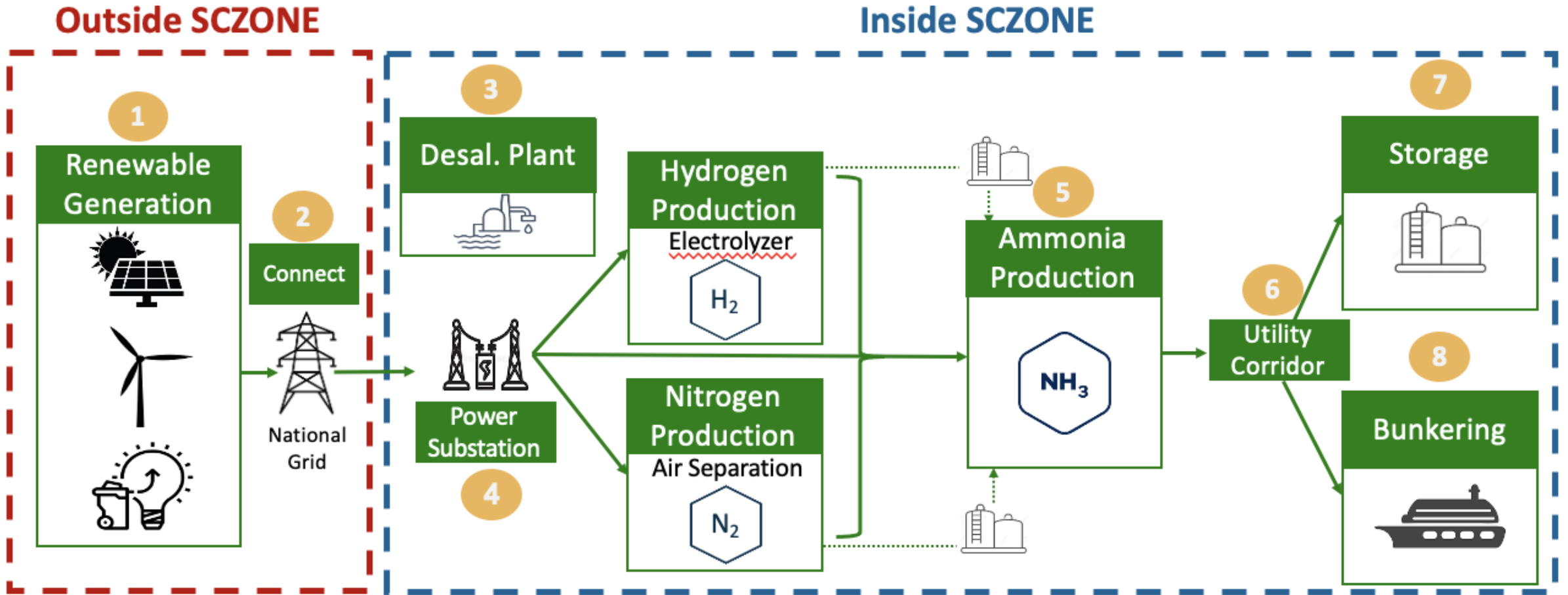


DESAL. WATER PLANT

LIQUID BULK TERMINAL

TANK FARMS

Operational Model of Green Fuel Projects at SCZONE



Investment opportunities in Green Fuel Industry at SCZONE

- Green Hydrogen Production
- E-Methanol Production
- Green Ammonia Production

Main Stream

- Electrolyzers
- Solar PV
- Wind Blades & Turbines
- Water Desalination Membranes
- Maintenance & Vocational Training Centers

Feeding Industries

Infrastructure

- Power Sub-stations
- Utility Corridor
- Water Desalination Plant
- Liquid Bulk Terminal Operation

Green Bunkering

- Sokhna Port
- East Portsaid Port

Automotive Industrial Cluster

Capitalizing on the successful model of the rolling stock cluster, the SCZONE plans to host an automotive manufacturing cluster at East Portsaid Industrial Area, with a shared operational model for the Stamping Shop, the Plastic Parts Paint Shop, and the Paint Shop

1.2 km²

PHASE 1

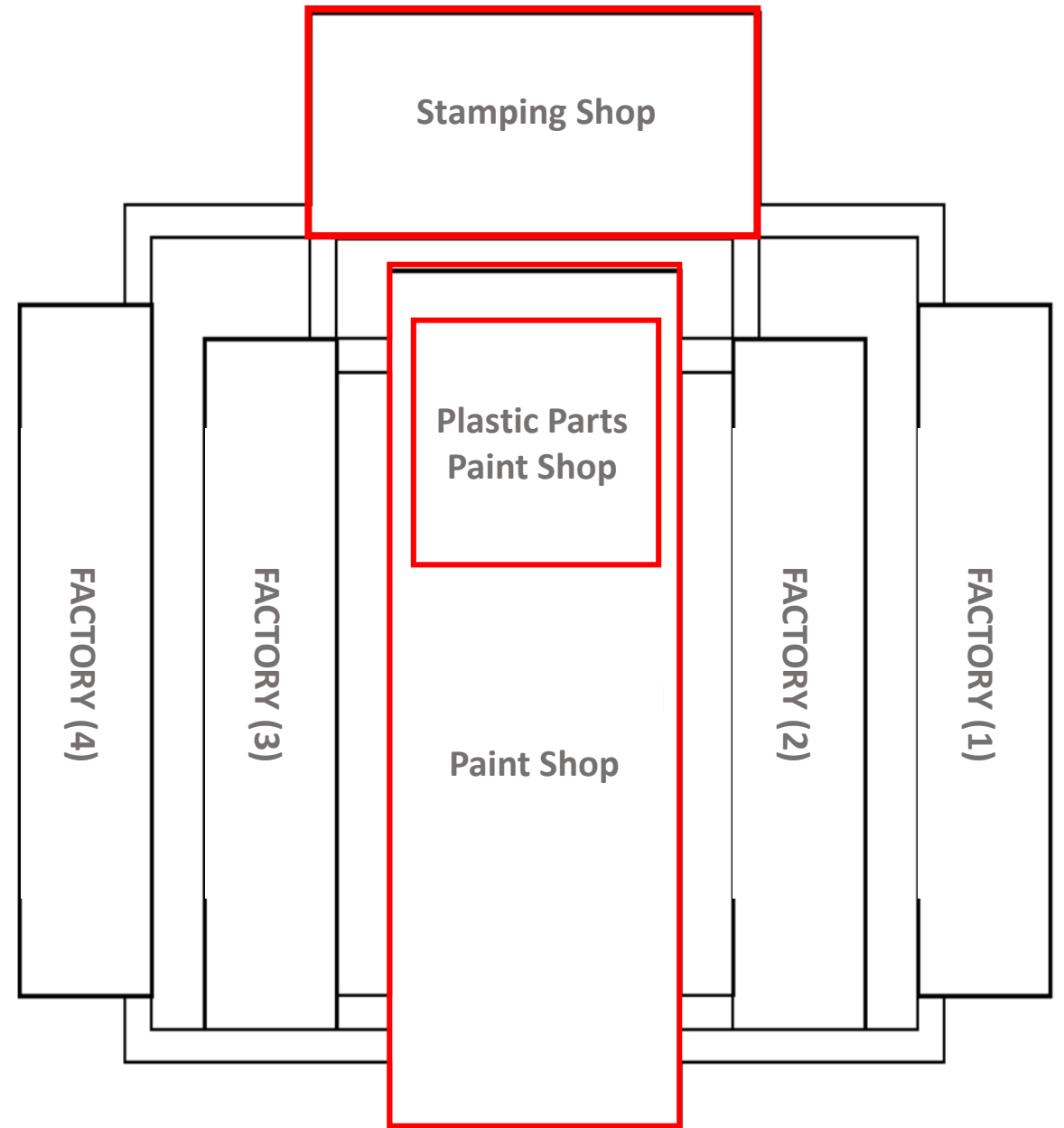
Industrial Land

75,000

UNITS

Production Capacity

The industrial cluster is expected to attract the feeding industries, and should serve the local and regional markets leveraging on the presence of a RORO terminal at East Portsaid Port



SC°ZONE'

INTEGRATED ROUTE » ONE DESTINATION

THANK YOU

CAI 30°02'32"N 31°13'57"E

SUZ 29°42'49"N 32°18'17"E

PSD 31°15'33"N 32°18'10"E

المنطقة الاقتصادية
لقناة السويس
SUEZ CANAL ECONOMIC ZONE