

## Project for Development of the Construction Equipment Operator Training Centre

### ACHIEVEMENTS

- UNIDO and MoWT prepared the in-person training for the 50 MoWT trainers, which will take place for 12 weeks in total from February to April. The TOT is scheduled to run for 3 weeks each at each of the 4 central/regional mechanical workshops (CMW and RMWs in Kampala, Gulu, Bugembe, and Mbarara) as well as nearby sites for practical training. The first week at each location is dedicated to theory revision, pre-trip inspections, and discussion, while the other two weeks are spent for practical training on the equipment.
- On January 15, the UNIDO master trainer arrived in Uganda to conduct the training of the 50 MoWT trainers over the next 3 months.
- On January 20, the MoWT-UNIDO Technical Committee conducted a site visit in Luwero.
- On January 28, the engineering design consultant presented a master plan for the project site as well as preliminary designs for the buildings to the MoWT's top leadership. The PS lauded the initial presentation and approved that the consultant may proceed with the detailed engineering designs for final approval.
- From January 31 to February 4, UNIDO, the Directorate of Industrial Training (DIT) and Victoria Equipment (VEQ) hosted a 5-day workshop for the future assessors for the Assessment and Training Package (ATP) "Trainer of Plant Operators Level 4". This workshop will allow the 2 selected participants to become the first registered assessors with DIT for the "Trainer of Plant Operators Level 4" curriculum.



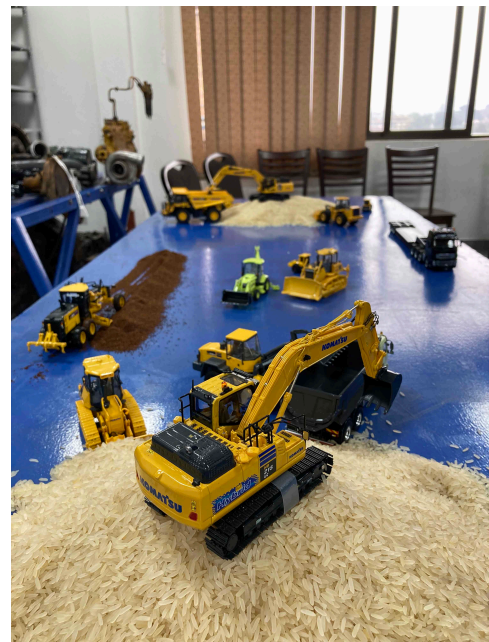
*MoWT-UNIDO Technical Committee  
site visit in Luwero © UNIDO*



*DIT workshop at VEQ for the future assessors © UNIDO*

### PLANNED ACTIVITIES IN FEBRUARY 2022

- The practical training of trainers will commence with the 1st batch of 11 trainees from MoWT Central Mechanical Workshop (CMW). After one week of theory revision at VEQ in Kampala, the trainees will move to the project site in Luwero, where the METRAC training centre will be built later this year. Their work on the plot will therefore not only serve as training, but also expedite the construction process of METRAC.
- The engineering design consultant (Arch Design Ltd) will finalize the detailed designs for the METRAC buildings.



*Die-cast models set up for the first day of practical training  
on January 31 © UNIDO*