

SC^oZONE!

CAI 30°02'32"N 31°13'57"E

SUZ 29°42'49"N 32°18'17"E

PSD 31°15'33"N 32°18'10"E

المنطقة الاقتصادية
لِقناة السويس
SUEZ CANAL ECONOMIC ZONE

31°14'39"N 32°18'18"E
WEST ←
PORTSAID PORT
ميناء غرب
← بورسعيد

29°42'47"N 32°18'18"E
ALTOR
PORT
ميناء
الطور

31°12'26"N 32°21'26"E
EAST →
PORTSAID PORT
ميناء شرق
→ بورسعيد

31°06'56"N 32°22'18"E
EAST →
PORTSAID ZONE
المنطقة الصناعية
شرق → بورسعيد

31°09'02"N 33°49'46"E
ALARISH
PORT
ميناء
العريش

30°45'40"N 32°16'56"E
WEST ← QANTARA
INDUSTRIAL ZONE
المنطقة الصناعية
غرب ← القنطرة

29°53'23"N 32°27'40"E
ADABYIA
PORT
ميناء
الأديبة

30°37'14"N 32°21'35"E
EAST →
ISMAILIA ZONE
المنطقة الصناعية
شرق → الإسماعيلية

29°39'05"N 29°39'05"E
SOKHNA
PORT
ميناء
السخنة

29°39'12"N 32°18'37"E
SOKHNA
INDUSTRIAL ZONE
المنطقة الصناعية
السخنة

Content

01 ABOUT SCZONE

02 SCZONE STRATEGY 2020-2025

03 INVESTMENT OPPORTUNITIES

01 ABOUT SCZONE

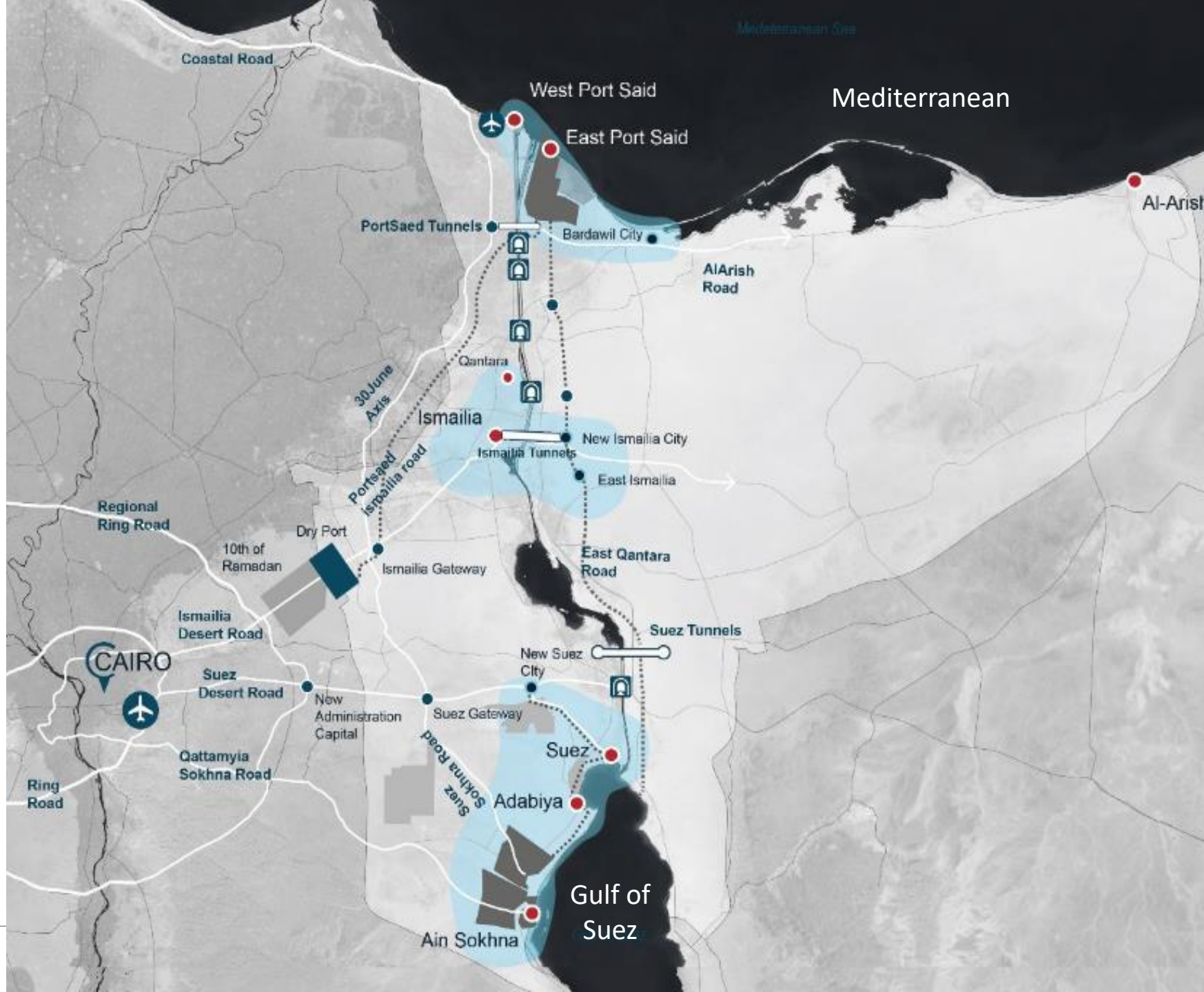
- Promising Investment Destination with total area of 461 km² including:
 - **4 Industrial Zones**
 - **6 Sea Ports**
- Distributed around the main international maritime route
- Almost 12% of the international trade pass through the Suez Canal
- Over 18,000 ships passing through annually and 10% of seaborne trade



01 SCZONE FACTS



REGIONAL CONTEXT & CONNECTIVITY



01

AFRICAN ROADS NETWORK

1

Cairo - Cape Town

2

Algeria - Lagos

3

Tripoli - Cape Town

4

Cairo - Dakar

5

Dakar - Mombasa

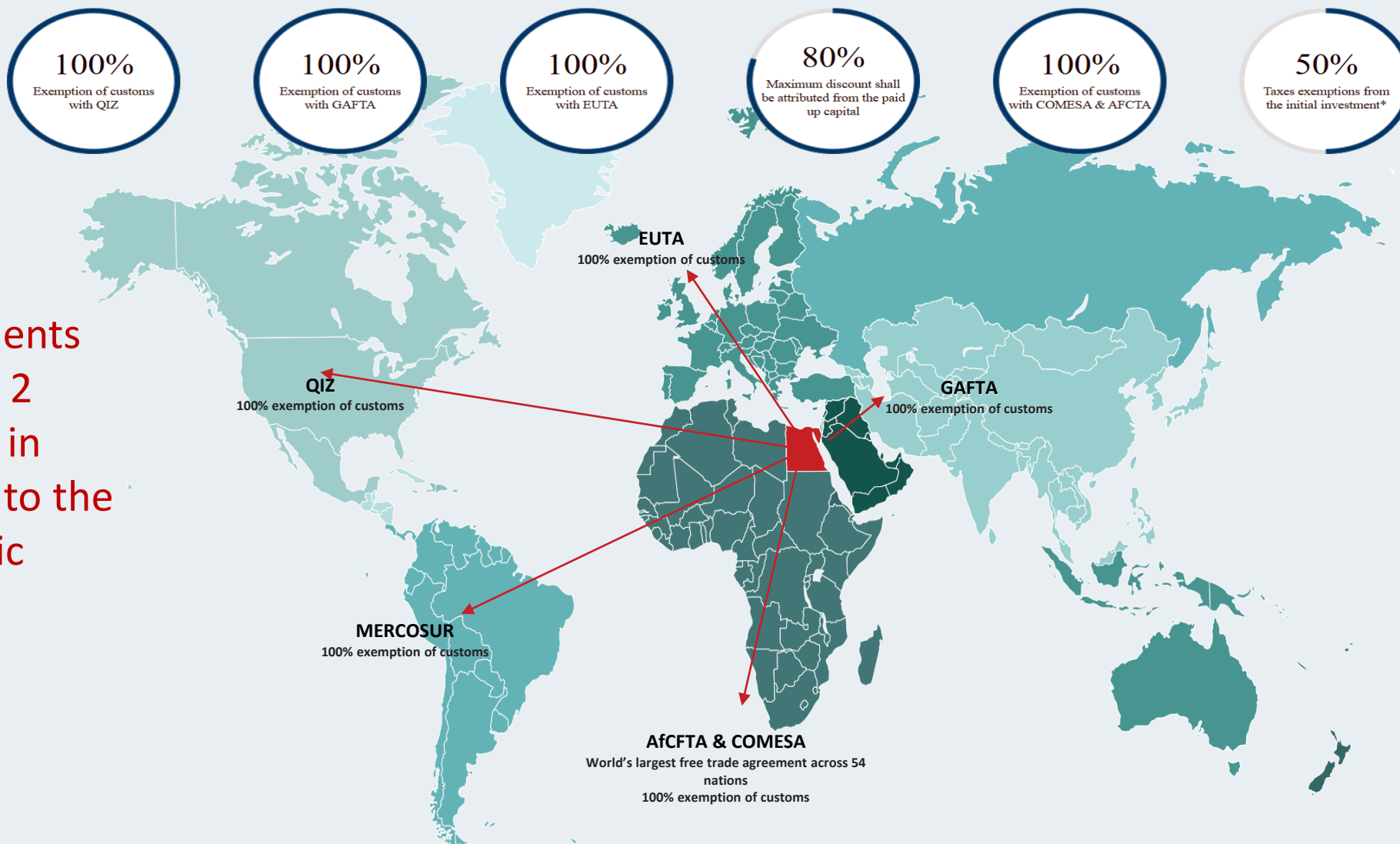
6

Beira - Lobito



SCZONE

01 MARKETS ACCESSIBILITY



Free trade agreements ensuring access to 2 billion consumers, in addition to access to the promising domestic market.

01 SOKHNA INDUSTRIAL ZONE

- One of the largest and integrated zones as the industrial, logistical and residential areas are connected to the Sokhna Port and Adabeya Port.
- An industrial development zone with an area of 210km² located 45km from the Suez, and 120km southeast of Cairo.
- Capacity to host over 85k job opportunities.
- 12 industrial developers taking part at developing the land area.
- More than 250 projects are established and in operation, creating over 30k direct and indirect job opportunities.

Land uses for Sokhna Industrial Zone:

Heavy Industries	Chemicals & Petrochemicals	Energy Components Manufacturing
Automobile Assembly & Parts	Construction and Building Materials	Textiles & Ready-Made Garments
Home Appliances & Electronics	Oil Refining	Food Processing
Pharmaceuticals	Logistics Activities & Courier Services	Refinery Products
SME Cluster Park Development (All Value Chains Activities)		

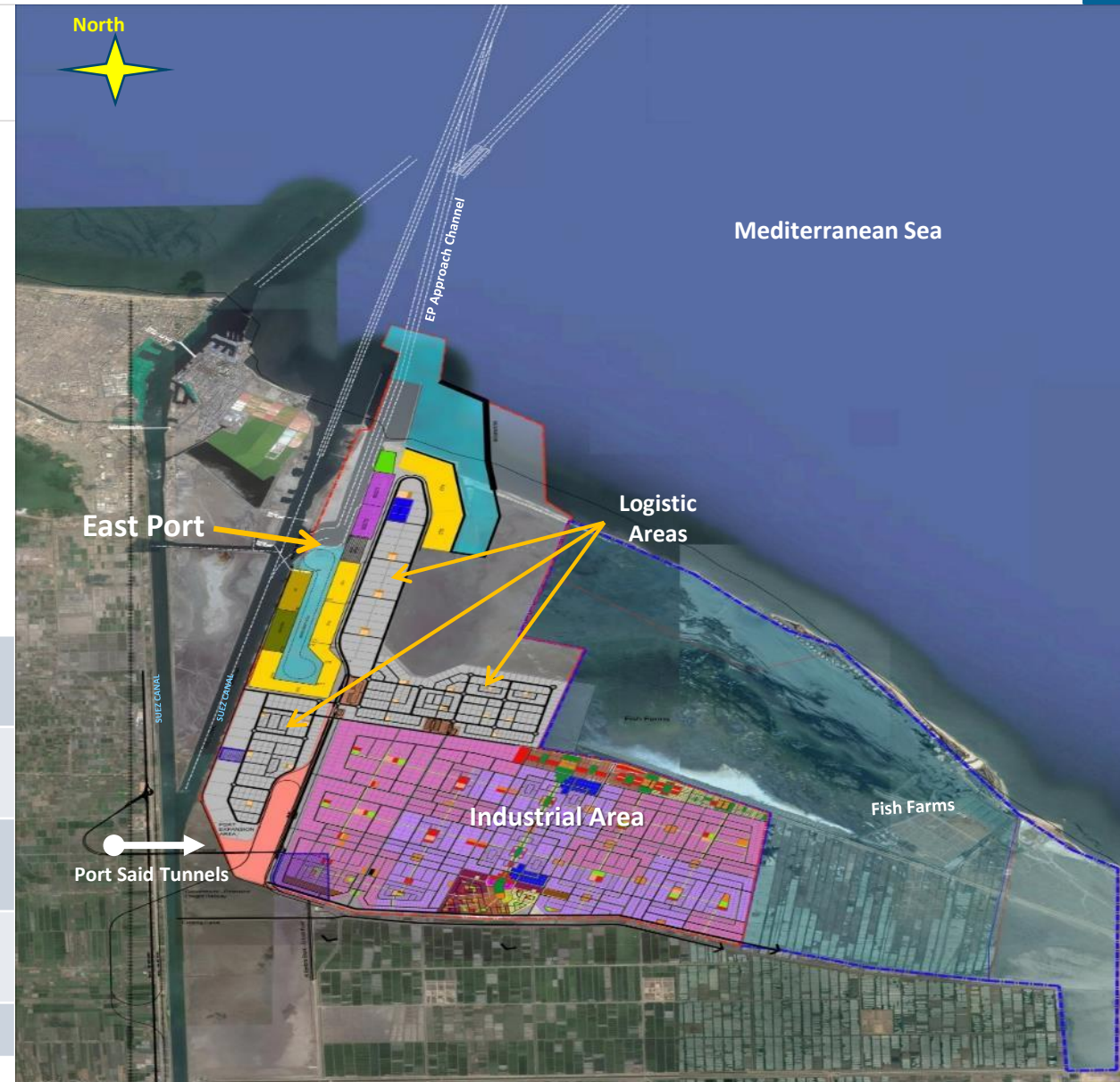


01 PORT SAID INDUSTRIAL ZONE

- Promising investment zone with total area of 63 km², located 10km away from the northern entrance of the Suez Canal.
- The rising star with integrated port/ logistics/ industrial zones to serve Mediterranean Sea area, East Africa, Middle East and Eastern Europe.
- The industrial zone earmarked for light and medium manufacturing, commercial and business activities with the capacity to create over 80k jobs.

Potential manufacturing activities and a wide range of industrial clusters in:

Automotive Assembly/ Feed Industry	Engineering Equipment & Machinery	Robotics/ Automation
Construction & Building Materials	Textiles & Ready-Made Garments	Home Appliances & Electronics
Electric Power Industry	Pharmaceuticals	ICT/ Hardware
Food Processing	Logistics Hub & Services	Value Add Activities
SME Cluster Park Development (All Value Chain Activities)		

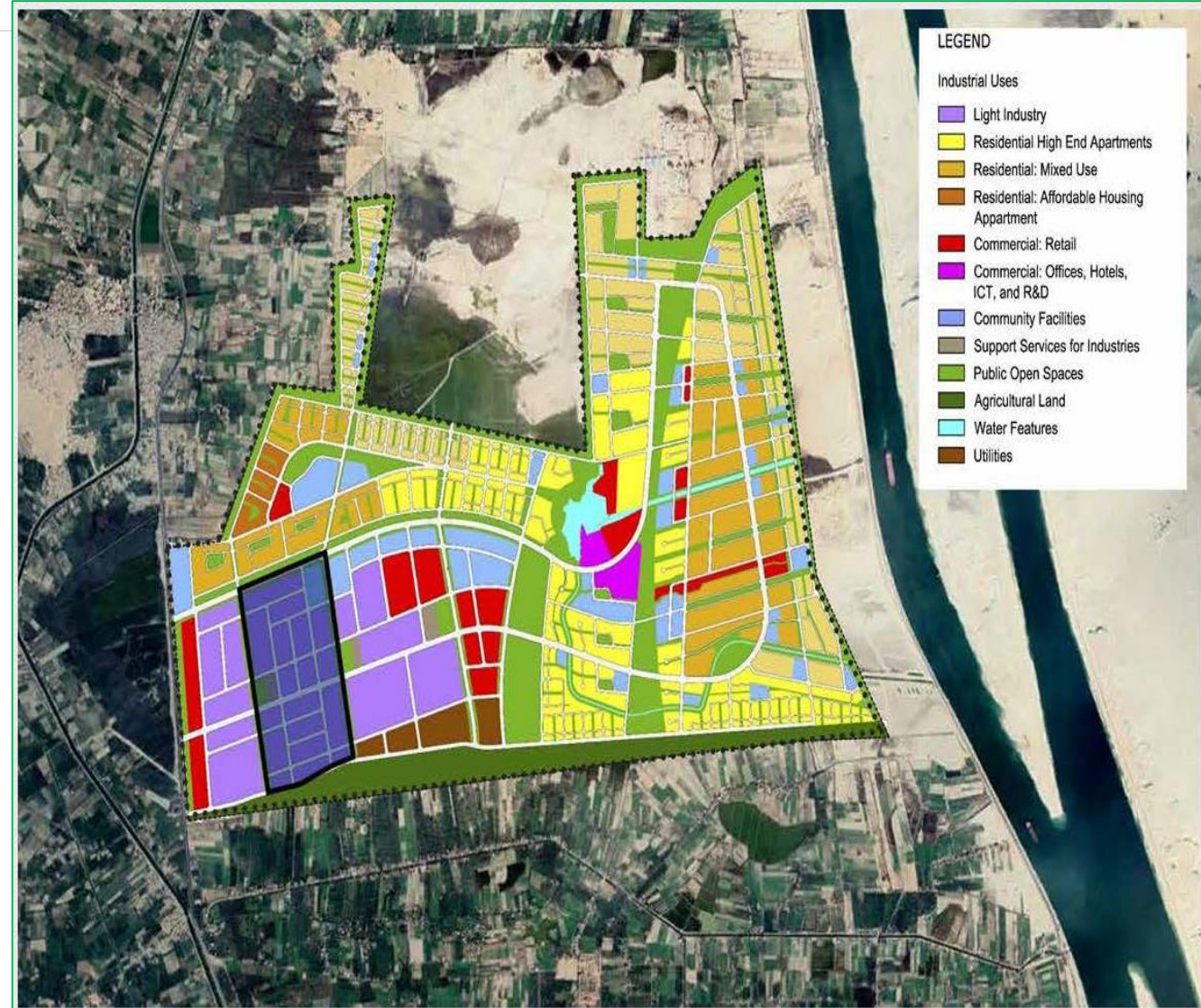


01 QANTARA WEST INDUSTRIAL ZONE

- Envisioned as a vibrant new community next to the Suez Canal with approximately 13 km² land area available for investment in an area well supplied with water, electricity and sewage.
- Located close to farmland in Ismailia and Sharqia Governorates on the road to Port Said-Ismailia, Qantara West benefits from proximity to the fertile Delta and is ideal for agribusiness.
- Suitable logistics enterprises include warehousing and fulfillment services, transportation and distribution, freight forwarding, Pick & Pack, to name but a few.

The targeted industries:

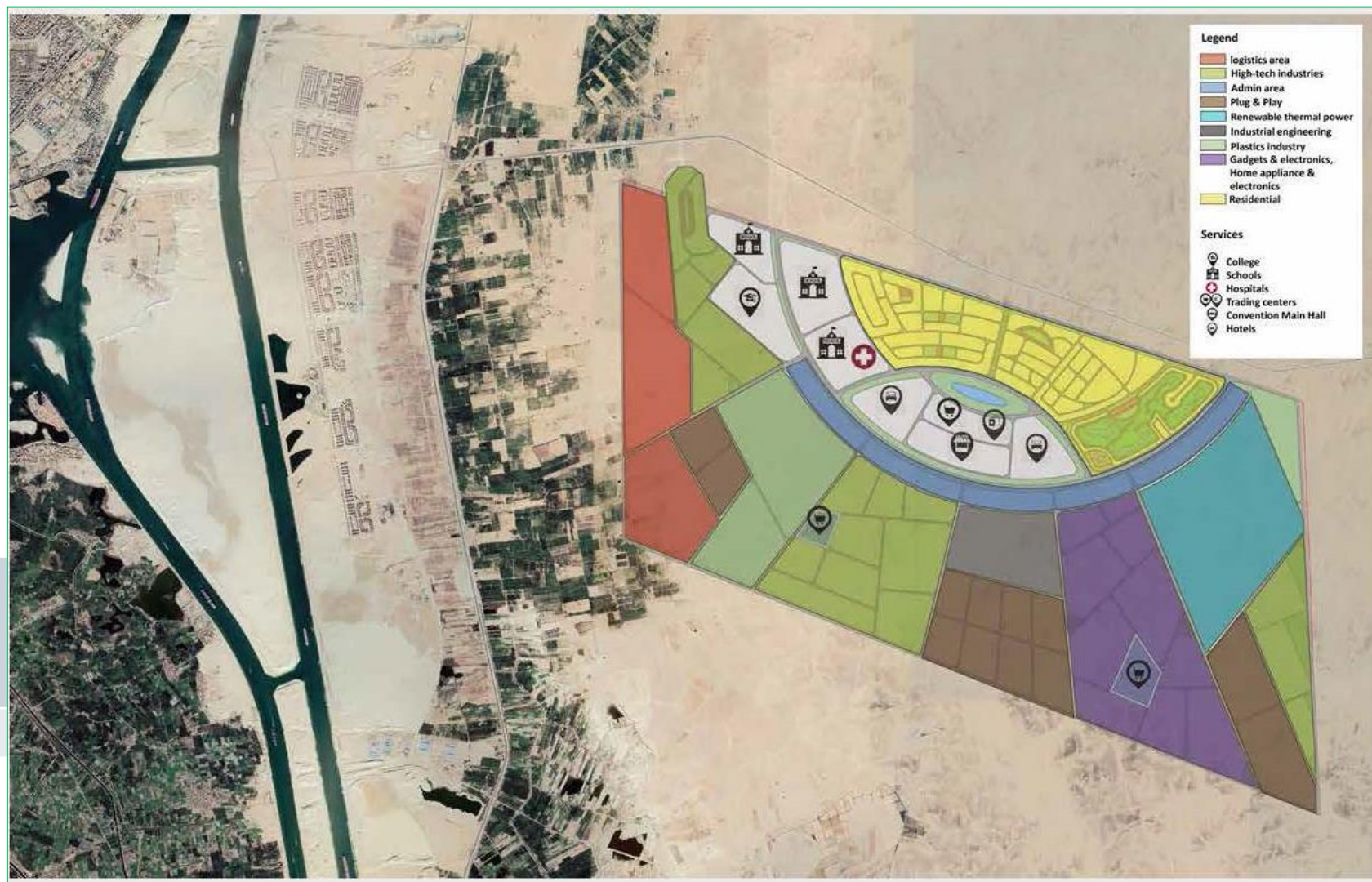
Light Industries	SMES' Parks	Agri-Business
Feeding & Integrated Industries	Food Processing & Beverages	Textiles & Ready-Made Garments
Related Logistics/ Dry Port	Support Services for Industries	Commercial Uses
Community Facilities		



- A new urban society that depends on economic activity resulting from the interaction of investment, education and scientific research based on high-tech industries.
- Total area of 70 km² strategically located 7 km away from the Suez Canal, on its East Bank, and 3km from Ismailia new tunnels.

The targeted industries:

High Technology Industries	Renewable Energy Integrated Industries	Commercial & Community Uses
Educational & Scientific research institutions		



01 SOKHNA PORT

Location	<p>Egypt's main gateway to the GCC, East Africa and Asia. Located at the southern entrance to the Suez Canal On the west coast of the Gulf of Suez.</p>								
Port Specifications	<table border="0"> <tr> <td>Area</td> <td>23 km²</td> </tr> <tr> <td>Port Depth</td> <td>17 m</td> </tr> <tr> <td>Turning Circle</td> <td>650 m diameter</td> </tr> <tr> <td>Quay Lengths</td> <td>Container 2100 m General Cargo & Dry Bulk 750 m RORO 200 m</td> </tr> </table>	Area	23 km ²	Port Depth	17 m	Turning Circle	650 m diameter	Quay Lengths	Container 2100 m General Cargo & Dry Bulk 750 m RORO 200 m
Area	23 km ²								
Port Depth	17 m								
Turning Circle	650 m diameter								
Quay Lengths	Container 2100 m General Cargo & Dry Bulk 750 m RORO 200 m								
Port Utilities	<ul style="list-style-type: none"> ▪ Container Terminal total capacity of 2.9mn TEUs. ▪ Back Yards total capacity of 3.0 mn tons/annum. ▪ Dry Bulk Terminal total capacity of 6.0 mn tons/annum. ▪ Ro-Ro ▪ Liquid Bulk Terminal capacity of: <ul style="list-style-type: none"> - 100k m³ of fuel oil - 150k m³ of LPG - 80k m³ of Ammonia 								
Ongoing Development Work	<ul style="list-style-type: none"> ▪ Construction of: <ul style="list-style-type: none"> - 12 km quays with 17 m depth. - Cargo Terminals total area of 5.6 km² - Logistic areas total area of 5.3 km² - Main internal road linking the back yards with the port, with a length of 14 km. - 10 km of railways to be connected to (Sokhna/New Almain Electric Train) under construction. 								

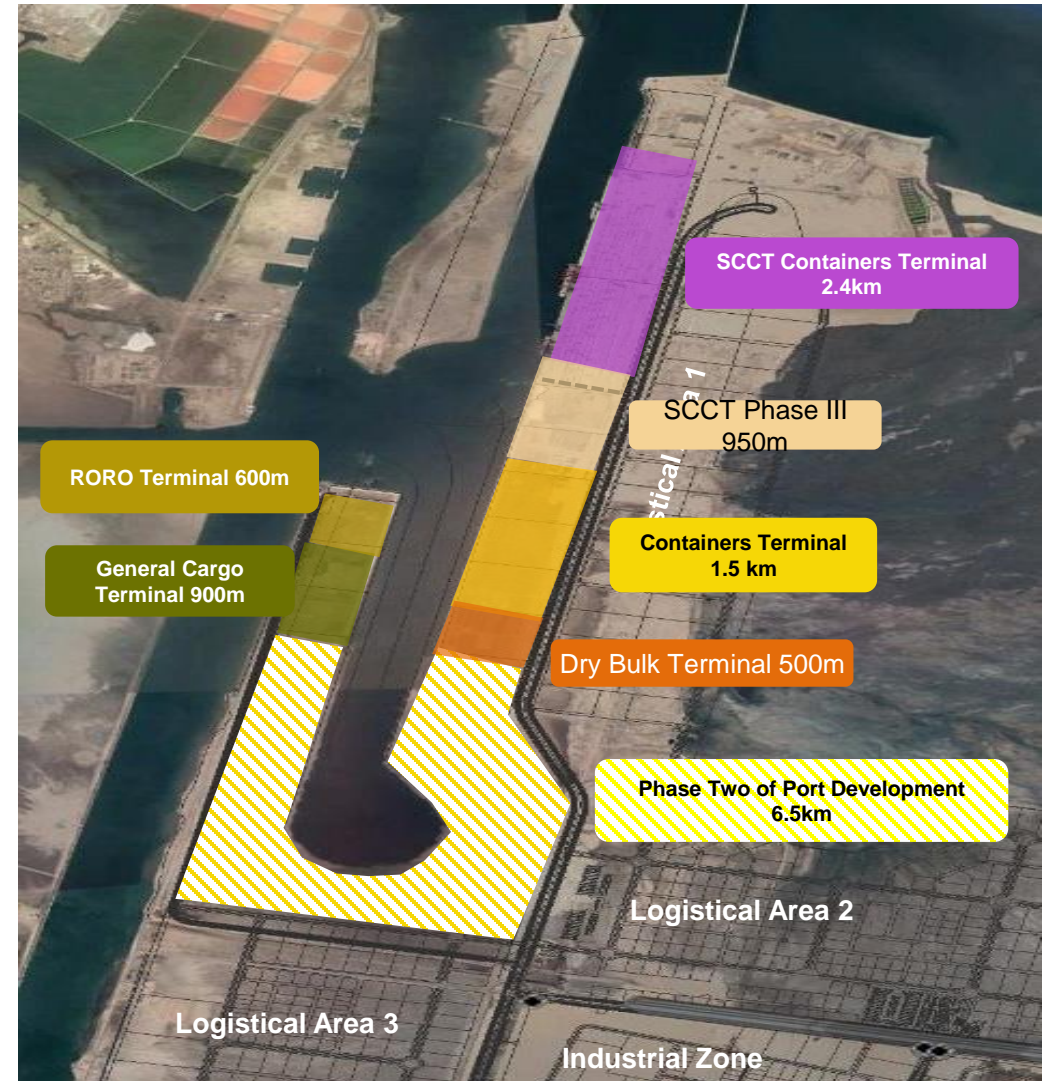


Location	Located at the northern end of the Gulf of Suez, 17 km away from Suez City	
Port Specifications	Area	1.1 km ²
	Port Depth	9-14 m
	Turning Circle	650 m diameter
	Quay Lengths	1.45 km
Port Utilities	<ul style="list-style-type: none"> General Cargo Terminal. Liquid Bulk/ Dry Bulk Terminal Ro-Ro The Ports receives small containers Receiving all types of Cargos like Dry Bulk, Liquid Bulk, General Cargo and Containers. 	
Port Maximum Capacity	11 million Ton/annum	



01 EAST PORT SAID PORT

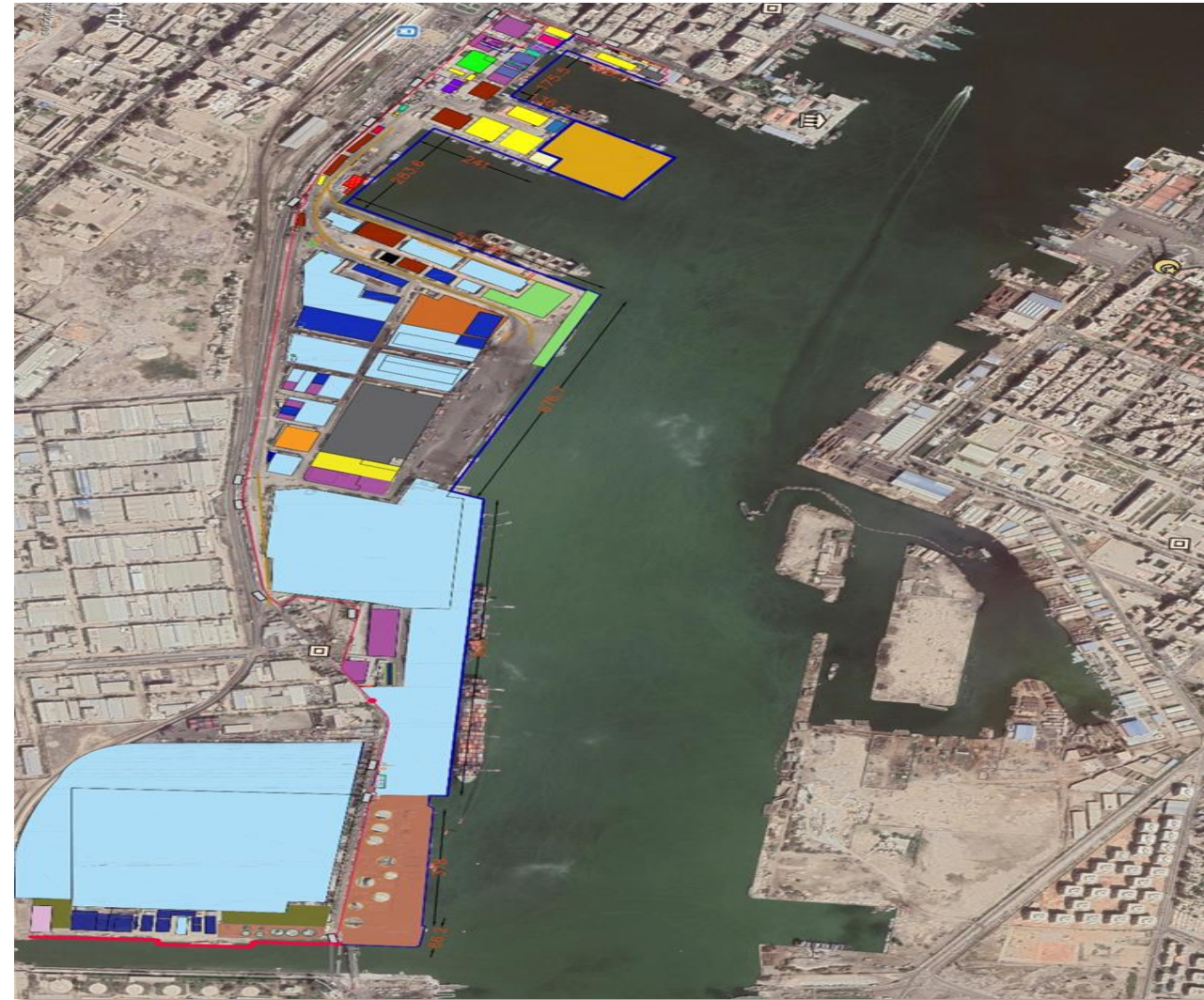
- Located alongside the Suez Canal, with sheltered deep water facilities capable of accommodating very large vessels
- Integrated with the East Port Said Industrial Area
- EPS Port is well-positioned as a major transshipment hub and gateway port
- An autonomous navigational channel of 5 miles enables fast and smooth access to & from the Mediterranean Sea separates from the northern entrance of Suez Canal
- The EPS port encompasses a major container terminal operated by AP-Moller with Maersk lines since 2004
- Other projects under contracting include (general cargo terminal, RO/RO terminal, dry-bulk terminal and a second container terminal)
- Recent expansion added quay lengths of 5 km of new Q-walls reaching 7.4 km in total with a basin of 550 m in width & 18.5 m of draft
- The port's layout allows for accommodating a modern port reception facility (PRF) in compliance with MARPOL annex 1



- West Port Said Port is situated at the Northern entrance of the Suez Canal at the crossroad of the main world sea trade route between the East and West via the Suez Canal
- A cosmopolitan trading hub occupying 2 km² with 4 km of berths and depths ranging from 10 to 16 m
- Total annual capacity of 13 mn tons and with a maximum capacity of 900,00 TEU/annum
- The Port's throughput is the multi-purpose cargo with average handling exceeding 8.7 mn tons/annum

The port contents:

- Container, general cargo & RORO terminals, in addition to ship services and petroleum services facilities
- A Cruise terminal with 3 berths totaling 400 m in length and 10 m of depth. The terminal is well-furnished with fully equipped reception halls.
- Facility for berthing yachts



01 AL-ARISH PORT

- Located at the Mediterranean Sea, at the northern east coast of Sinai
- 150 km from East Port Said Port
- Used for handling dry-bulk, general cargo as well as fishing
- Total area of 65,000 m² and quay wall total length of 369 m, the handling for General Cargo 1.2 mn tons/annum
- The Port is currently undergoing a major development plan with total area of 1.56 km² and quay wall total length of 5,600 m and alongside depth is 14 m



01 AL-TOR PORT

- Al-Tor port is located on the Red Sea at the eastern coast of the Gulf of Suez Gulf (about 280 km southwards Suez City), land area 100,000 m², with sheltered yard 5,600 m²
- Services are confined between general cargo & maritime services, the quay wall length is 75 m capacity for 380,000 tons/annum



**0%
CUSTOM
TAX**

- 0% Customs on all project's components imported from abroad under the condition of exporting the final products
- In the case of exporting to the local market: custom tax will be applied on the imported components only

**0%
VAT**

- 0% VAT applied whether importing from local or foreign markets to SCZONE, on all procurements required for manufacturing, production, operation (raw materials, components, spare parts, etc.)
- 14% VAT is applied on exporting products from SCZONE to the local market

**CORPORATE
TAX
(INCENTIVES
FOR 7 YEARS)**

- Discount on Corporate Tax (net profit) equivalent to 50% of project investment costs
- Discount shall be attributed maximum to 80% from the paid-up capital

EXPORT & IMPORT
REGULATION

- Special rules governing the import and export from the SCZONE
- Reducing cost & time of regulatory examination of shipments
- Treating the end product of SCZONE industrial establishments as local products

NEW CUSTOMS
GUIDE 2020

- Creating an integrated industrial community
- Establishing a logistic platform to serving international trade and SCZONE
- Reducing Time of Release of Shipments

EXPORT SUPPORT
PROGRAM

- Industrial manufacturers for export purposes at SCZONE will benefit from the program
- Enhancing the competitiveness at foreign markets

DIGITAL
TRANSFORMATION

- New website introducing e-services
- Enhancing communication with investors through digital platforms

INCENTIVES TO
LABOR-INTENSIVE
PROJECTS USING
LOCAL COMPONENT

- Reduced prices or facilitate the payment of the value of the energy
- Full/Partial reimbursement of utilities cost done by investors on the project's land
- Partially/fully pay the insurance share of Egyptian employees & the employers for specified period

5-YEAR RESIDENCY
PERMIT TO FOREIGN
INVESTORS

- Foreign investors have the right to obtain residency for a period of 5 continuous years, renewable for similar periods throughout the duration of the project

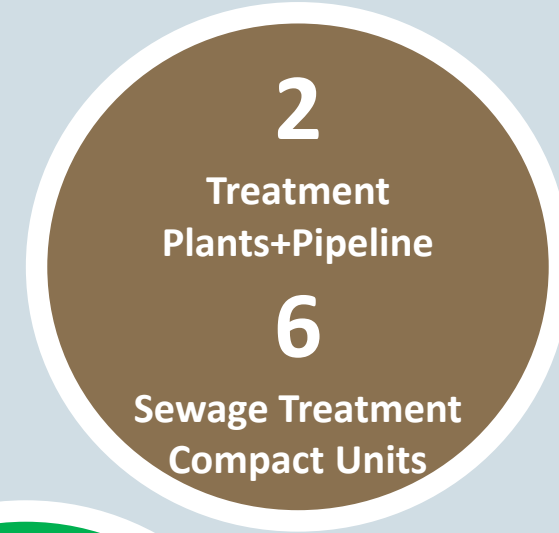
POWER



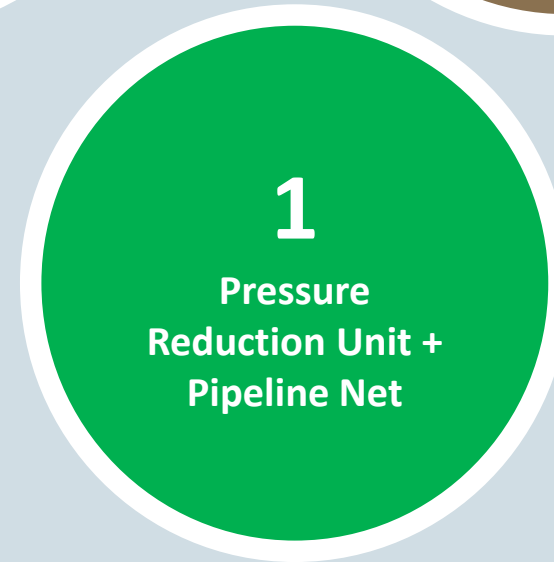
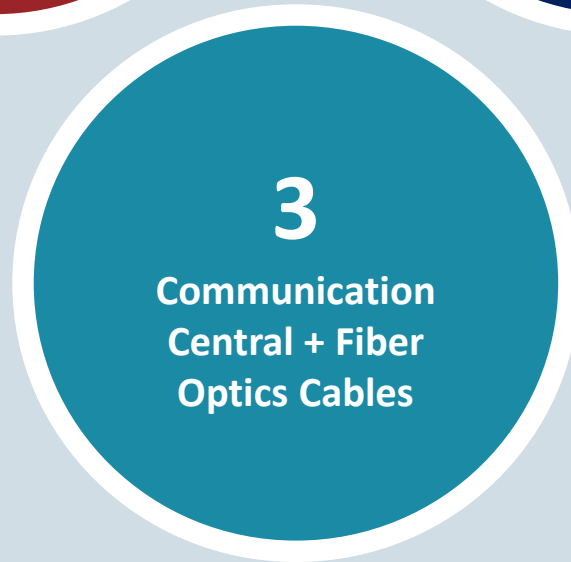
WATER



WATER TREATMENT



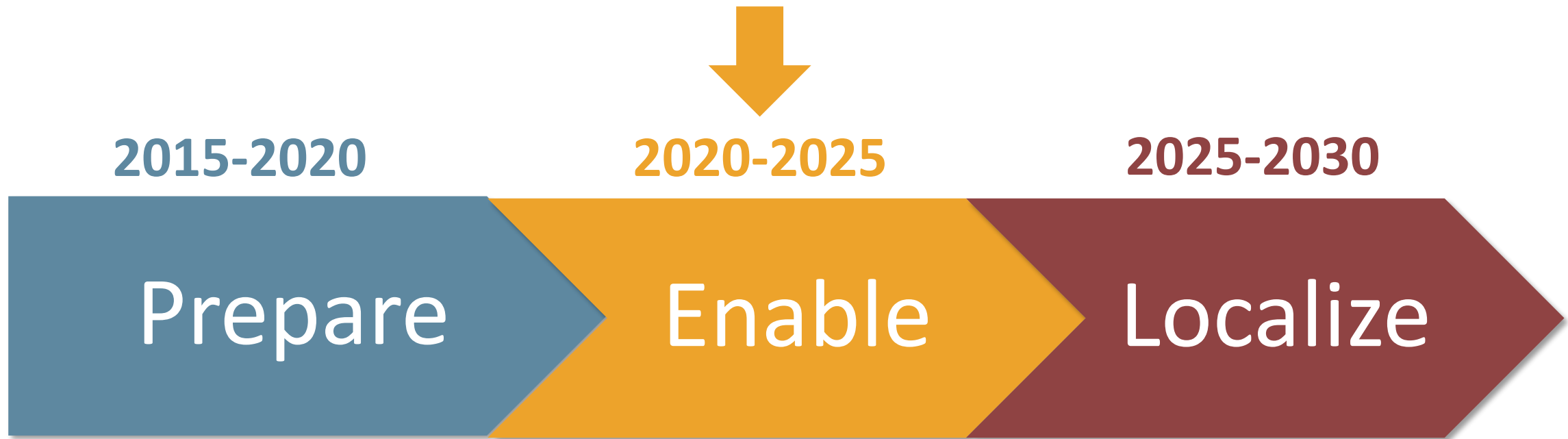
COMMUNICATION



NATURAL GAS

02 SCZONE STRATEGIC PLAN (2015-2030)

The SCZONE was established in 2015 with a three-phases strategic plan till 2030



Create investment opportunities in industrial and maritime sectors

Localize targeted industries to substitute imports

Adopt industrial clusters policy

Apply a world-class infrastructure

Capitalize on SCZONE's role as a global logistics hub amid international supply chains

Dynamically contribute to Egypt's growth rate, while also foster SCZONE's position as an international Investment hub and an export platform with a distinctive access to Africa

Target investments and attract international shipping lines to the ports

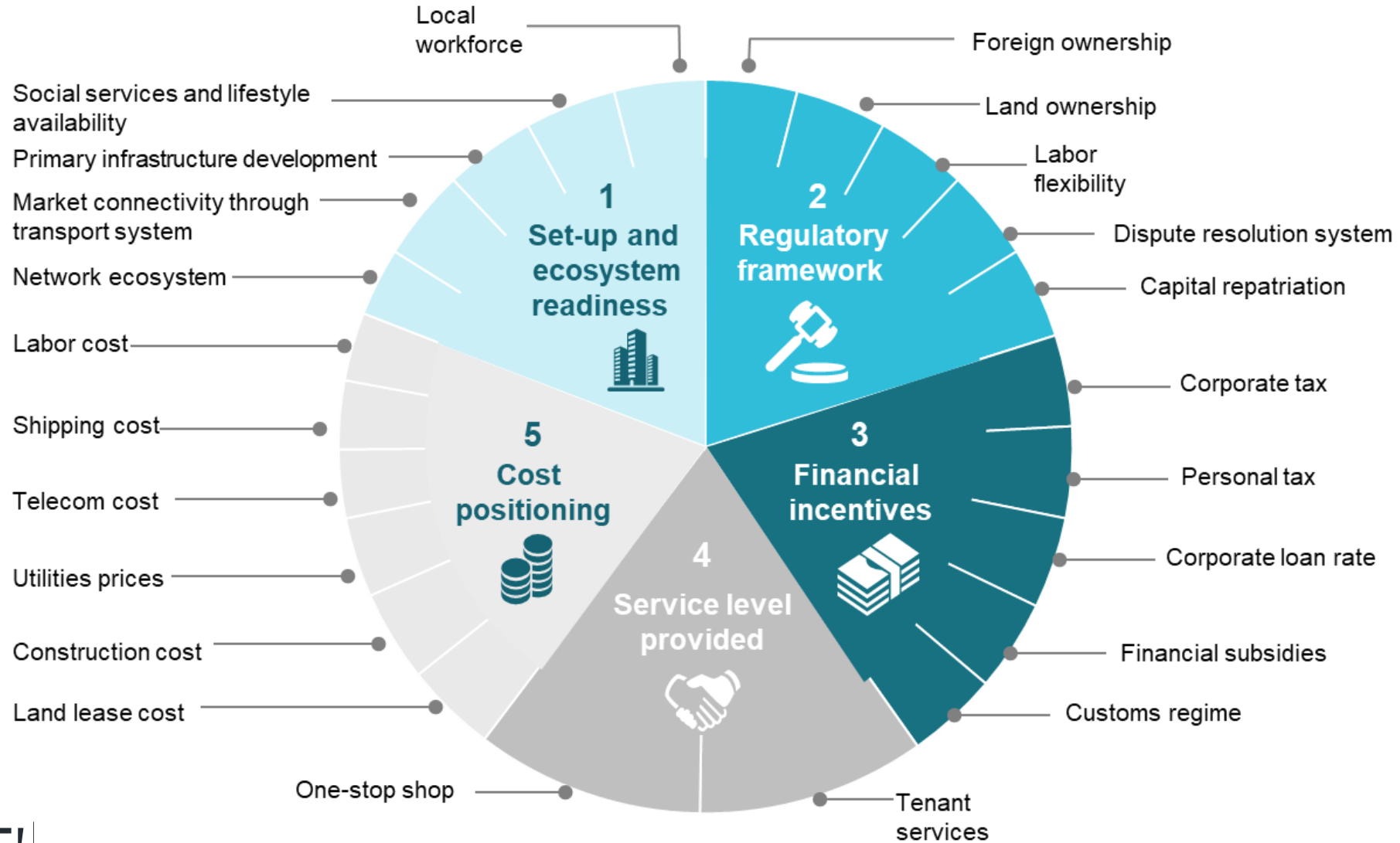
Introduce an effective mechanism for maritime services and bunkering facilities

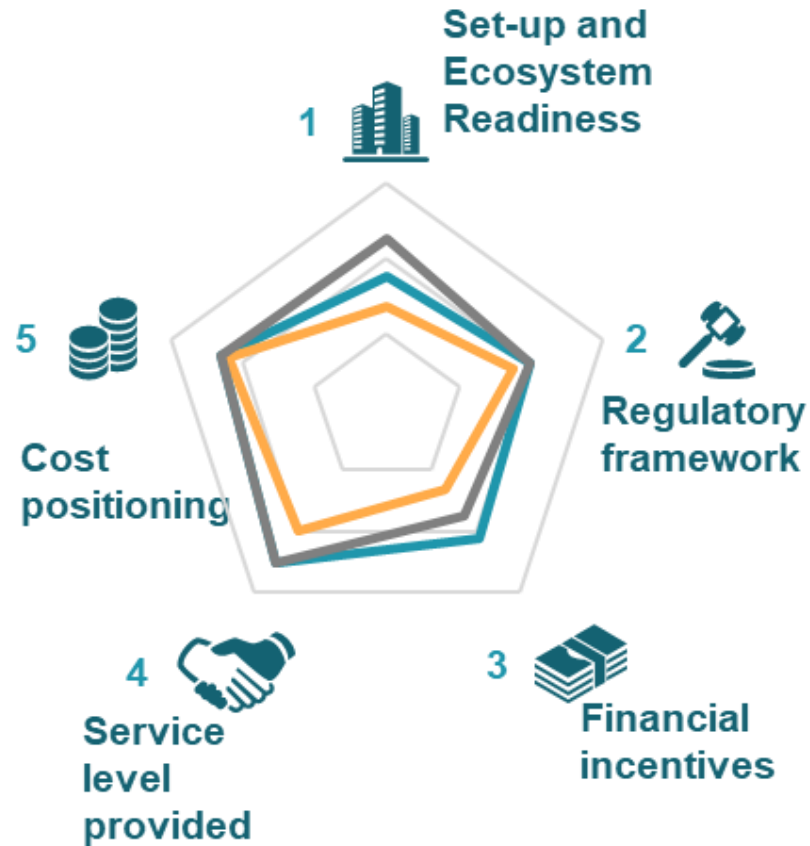
Develop platforms for small and medium enterprises

Establish financial, commercial and services centers

Launch a new business identity and organizational reforms

5 MAIN PILLARS FOR STRATEGY IMPLEMENTATION





Short Term

- Significant focus on financial incentives, specifically for targeted sectors
- Accelerate implementation of initiatives to strengthen regulatory framework and service levels

Long Term

- Focus on increased ecosystem readiness
- Financial incentives to be reduced after 4 other dimensions become strong enough to attract tenants on their own

03 TARGETED SECTORS/ INDUSTRIES

Bunkering

Logistics

Data Centers

Rolling Stocks

Automotive

Petrochemicals

Tires

Electric Batteries

Pharmaceuticals

Pharmaceuticals
(Active Substance)

Solar Cells

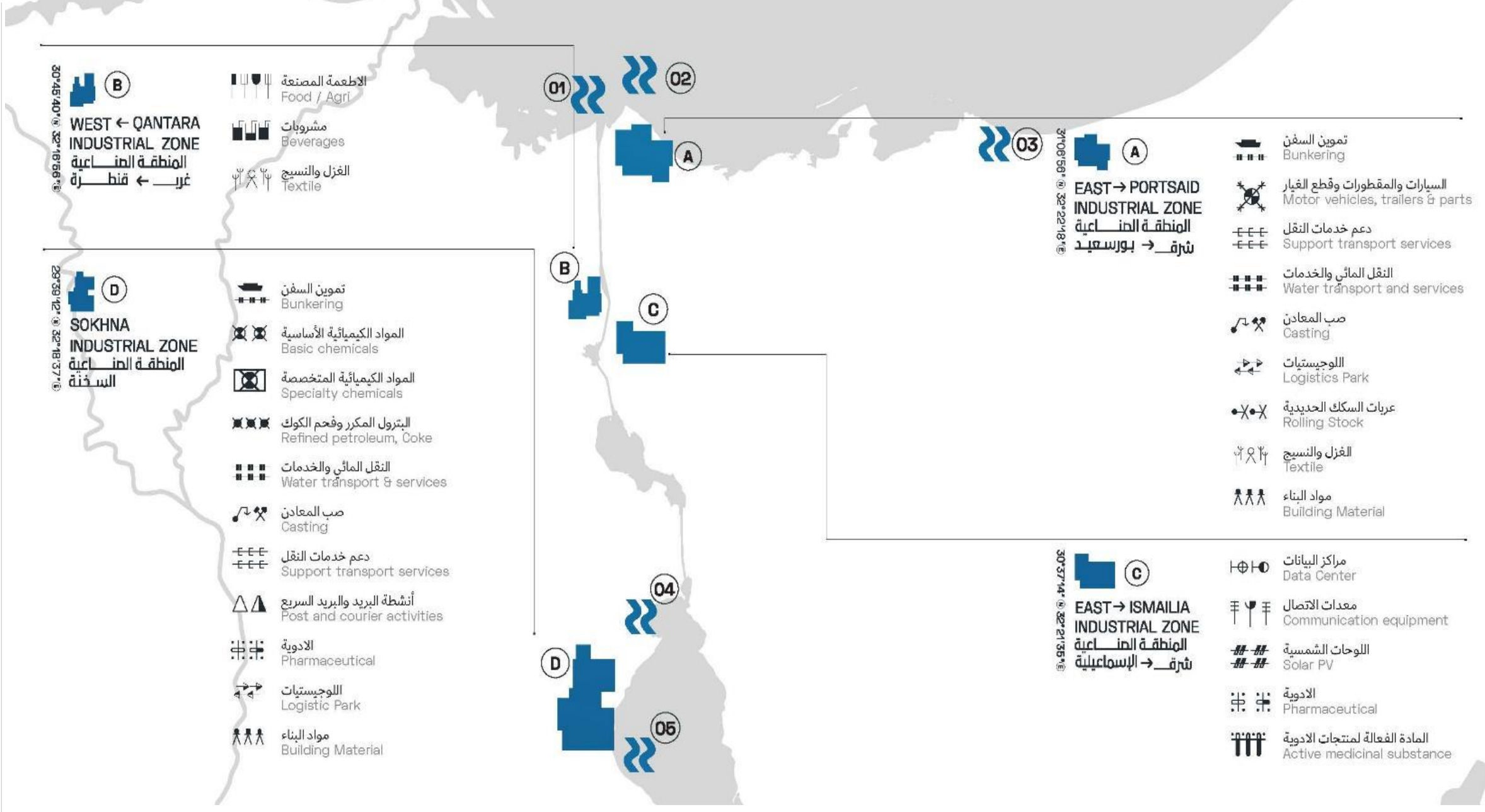
Casting

Building Materials

Textile

Agribusiness

INDUSTRIAL CLUSTERS DISTRIBUTION



THANK YOU