

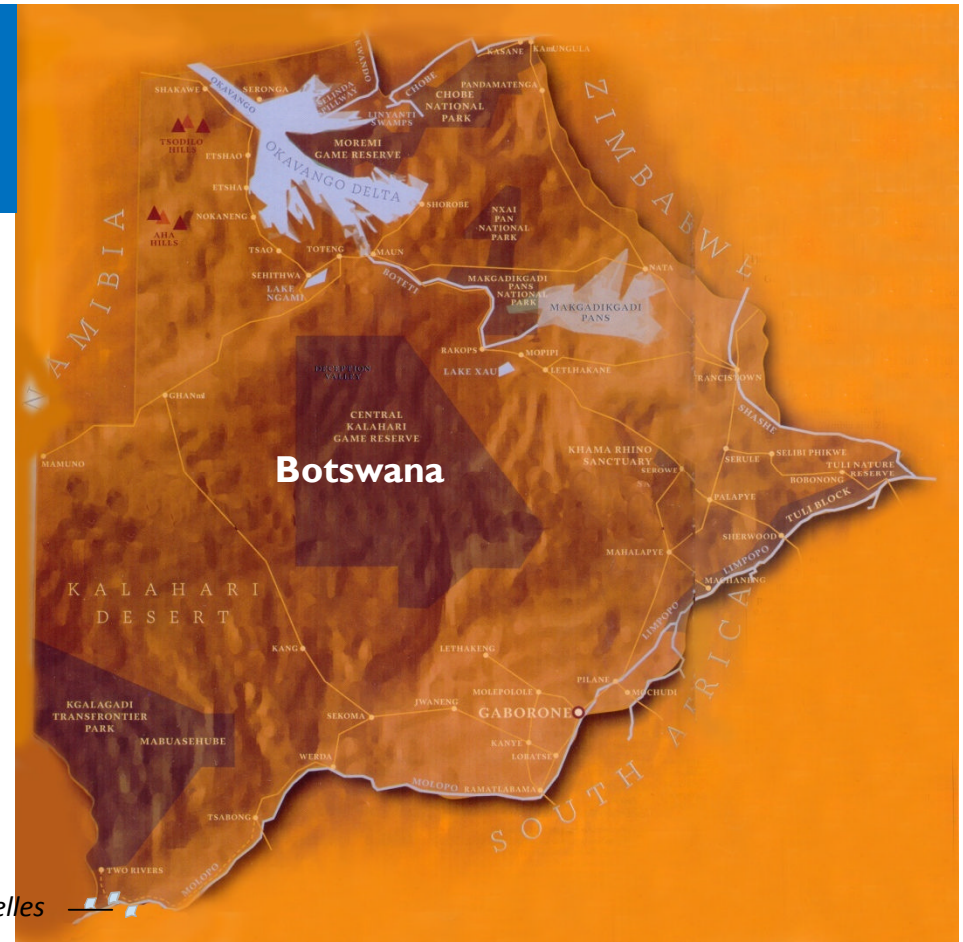
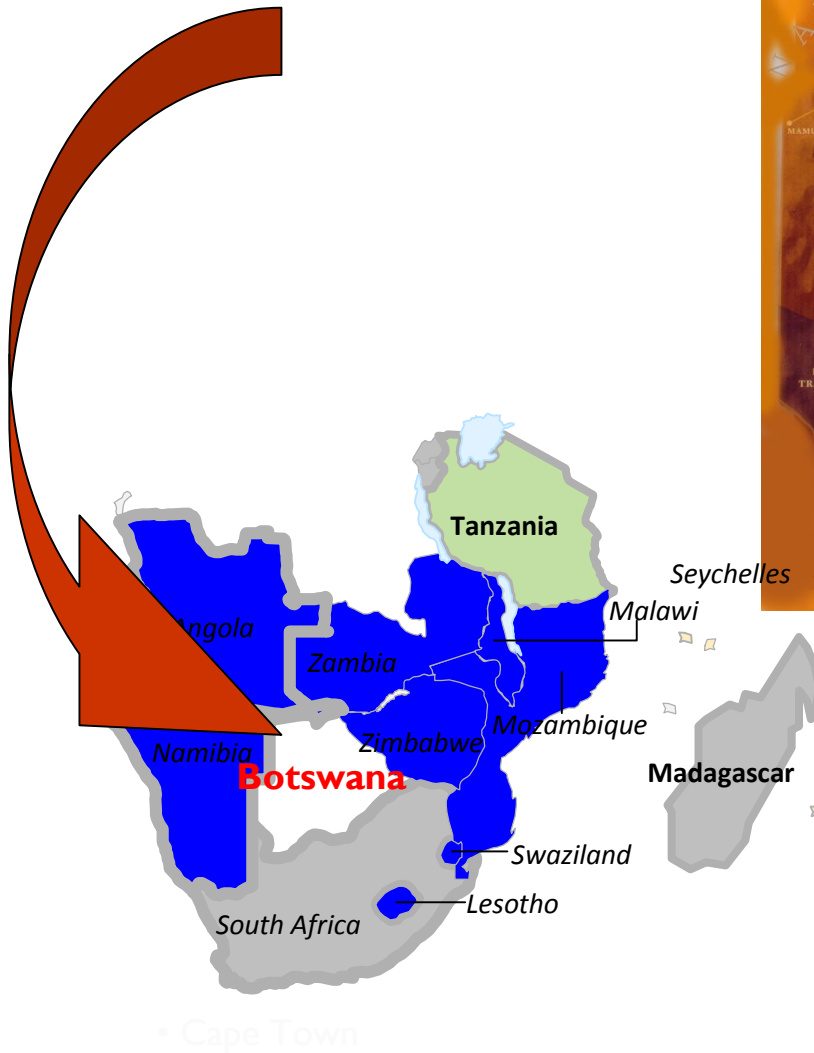


# A Place to Live, Visit and Invest



Hon. Minister Dorcas Makgato-Malesu  
Minister of Trade and Industry, Republic of Botswana  
June 2, 2013

# Our place in the world



- **Strategic Location**

# Why Botswana



- Committed to progress with integrity
- A peaceful and prosperous nation
- A safe and secure place to live, visit and work
- Economically strong and politically stable
- A democratic country with good governance structures

# A place to live

- Modern and attractive to live in, work and enjoy life
- Offers good quality of life
- A place to raise children and enjoy an excellent work-life balance
- Friendly, welcoming and accommodating people



# A place to visit

Unique and diverse  
experience

Tourism For Tomorrow  
Award (Destination  
Stewardship Award for  
successful work in  
advancing sustainable  
tourism best practices)

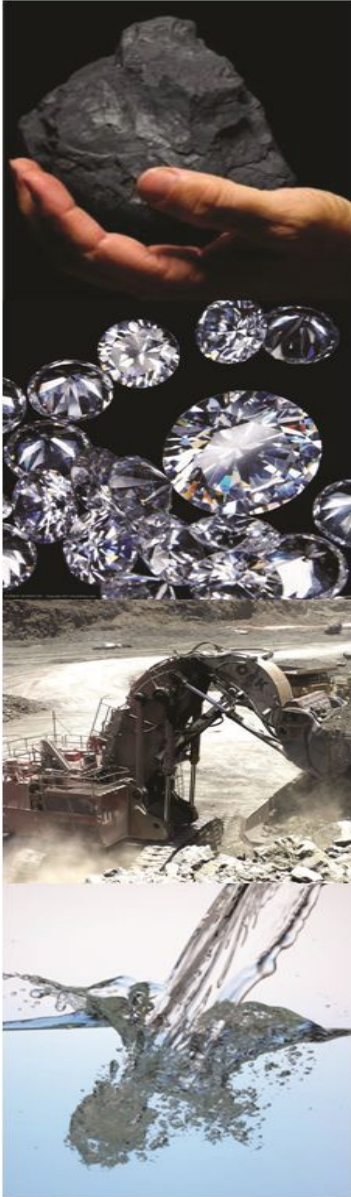
Preservation of heritage  
for visitors and future  
generations

# A place to invest



- Good sovereign credit ratings
  - transparency international: (30/176); ranked least corrupt country in Africa
  - Cato Institute (67/144)
  - Standard & Poor: A- (Stable)
  - Moody's: A2 (Stable)
  - Aon Public; rated less risky/safest country (political risk, civilian unrest and acts of terrorism) – 12<sup>th</sup> out 200 in the world
- Business profitability index; rated 2<sup>nd</sup> after Hong Kong
- Lowest corporate tax rate in the region (15% for manufacturing /financial services, 22% for all other activities)
- Maximum personal income tax rate of 25%

# A place to invest

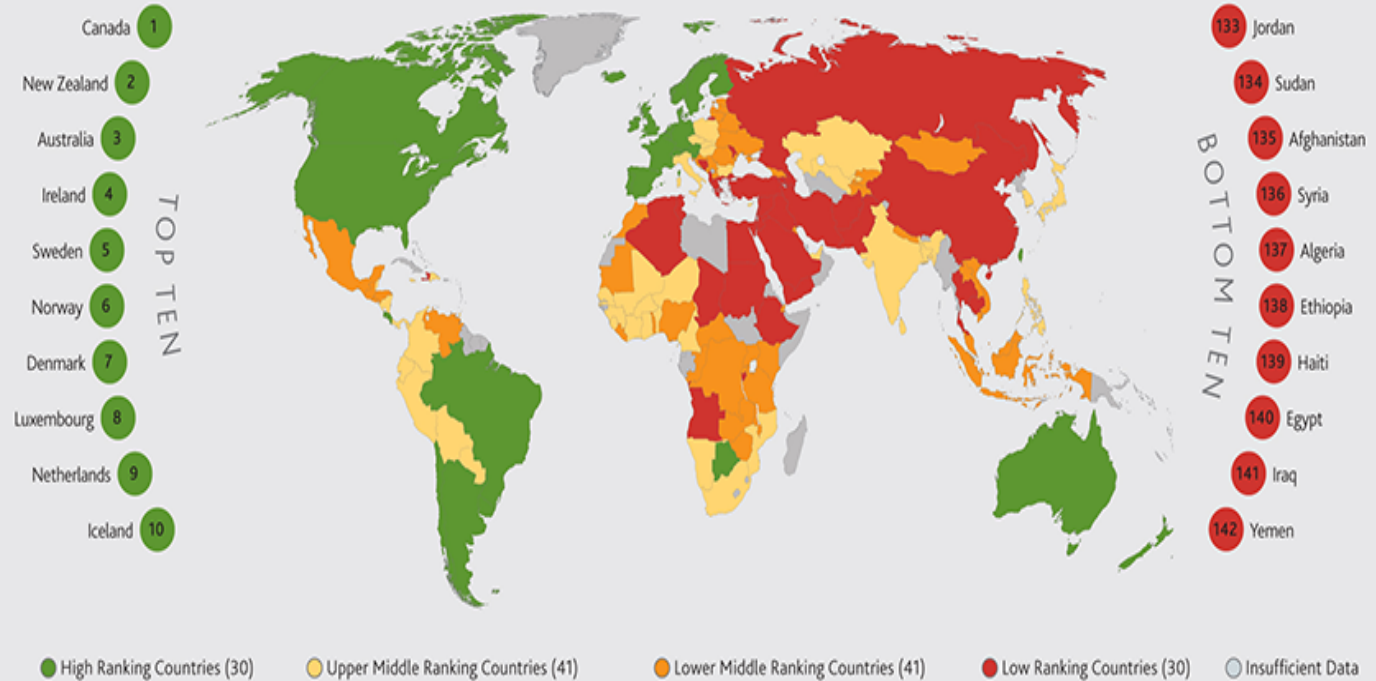


- No foreign exchange controls
- Duty free importation of machinery used in production
- Duty free importation of raw materials used in exportable products
- Several double taxation agreements including with RSA
- Enterprise can be 100% foreign owned
- Good industrial relations
- Trainable workforce and high adult literacy rate (82%)

# A place to invest



## SUB-INDEX: PERSONAL FREEDOM



**The only highly ranked country in Africa**

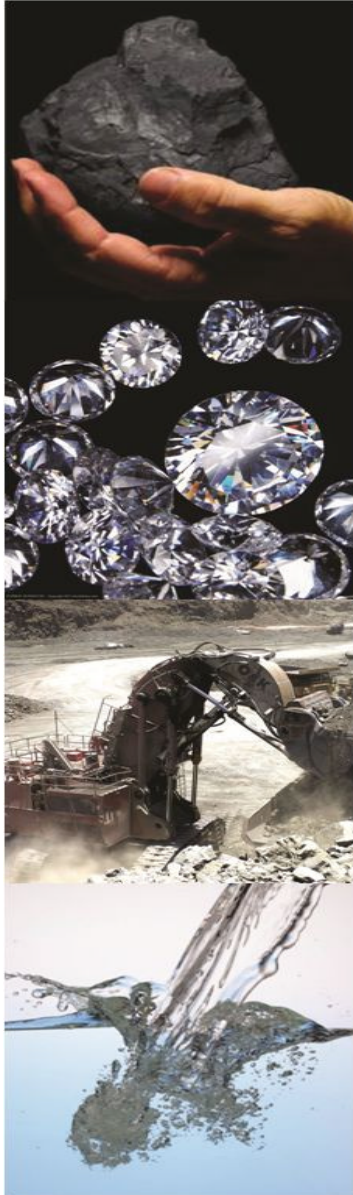


# Investments sought



- Strategic to economic diversification
- Export potential
- Creation of sustainable employment opportunities
- Sustainable utilization of natural resources
- Technological transfer
- Skills transfer

# Investment opportunities




- Mineral Resources and Energy
  - Diamond, coal and copper beneficiation
  - Renewable energy; solar and gas
- Agriculture
  - Primary production; grains, horticulture
  - Agro processing; meat, fruit, vegetables and feeds
- Manufacturing
  - Recycled material products; paper and plastic
  - Garments
- Tourism and hospitality
- Financial and Professional Services
  - Intermediary Holding Structures

# Home to some Japanese companies

**KOMATSU**

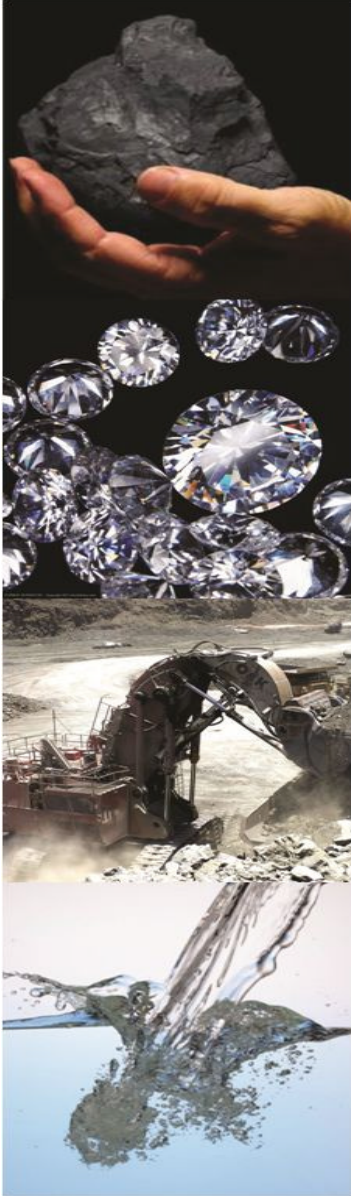
dimension  
data 

***NIPPON KOEI***  
*Challenging mind, Changing dynamics*

 **JOGMEC** Japan Oil, Gas and Metals National Corporation

**Marubeni**

# Institutional Support



## **Botswana Investment and Trade Centre**

- National investment and trade authority in Botswana
- Investment facilitation; handholding & works closely with government
- Advocacy; to ensure conducive investment climate
- Botswana Embassy to Japan
- UNIDO – ITPO Tokyo

Thank You

